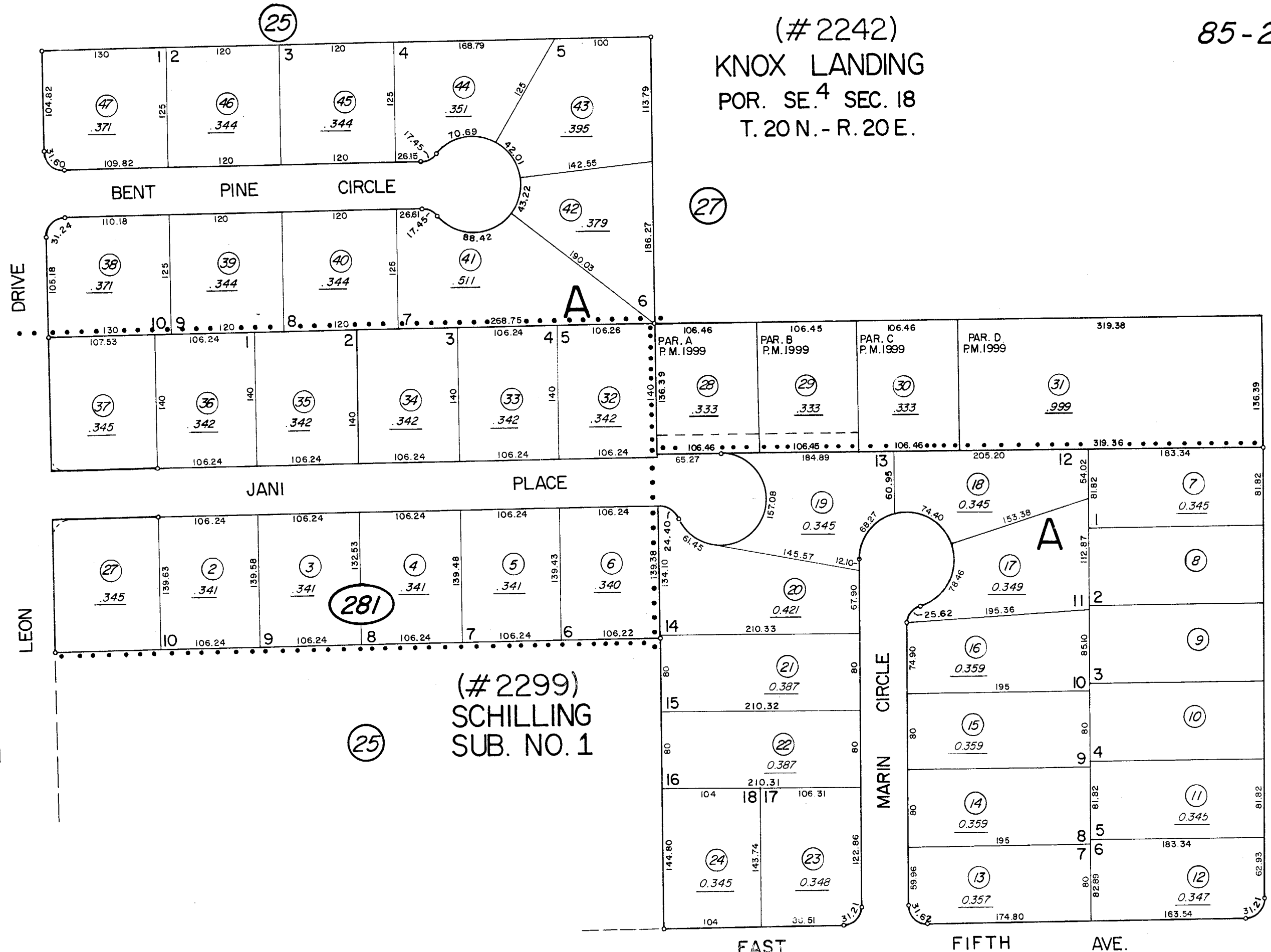


(#2242)  
KNOX LANDING  
POR. SE. 4 SEC. 18  
T. 20 N. - R. 20 E.



(#1190)  
SAGE  
SUB.

44

83

27

281

25

(#2299)  
SCHILLING  
SUB. NO. 1

EAST FIFTH AVE.

Assessor's Map County of Washoe, Nevada

NOTE - ASSESSOR'S BLOCK NUMBERS SHOWN IN ELLIPSES  
ASSESSOR'S PARCEL NUMBERS SHOWN IN CIRCLES

Drawn by G.S. 5/85  
Revised by TWT 11/12/02

NOTE: This map is prepared for the use of the Washoe County Assessor for assessment and illustrative purposes only, it does not represent survey of the premises. No liability is assumed as to the sufficiency or accuracy of the data delineated hereon.