

085-23

85-24

BLVD.

N 1/2 OF THE SE 1/4 OF THE SW 1/4 OF SECTION 18 T20N - R20E

85-61

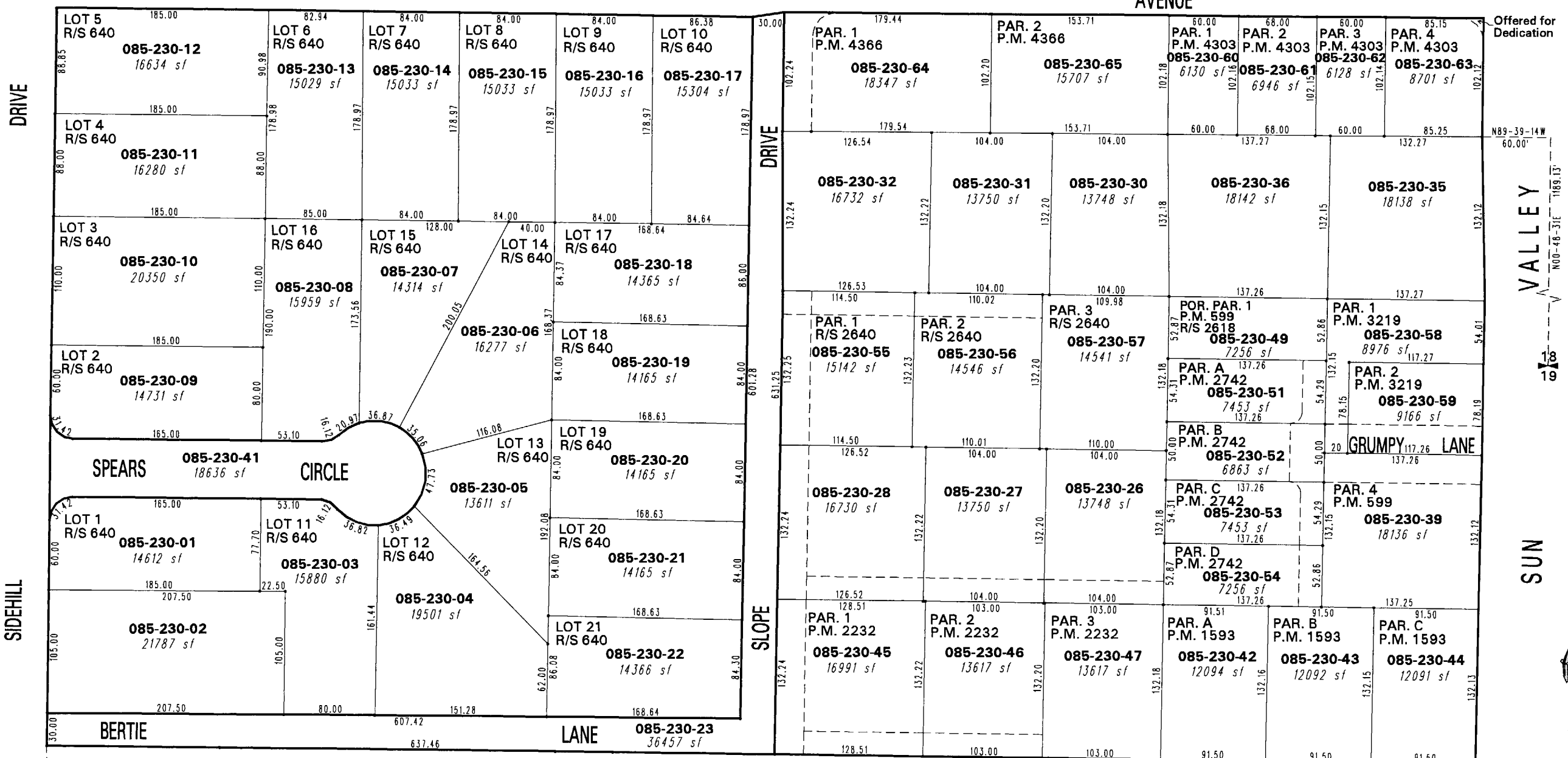
85-62

85-21

WEST

SIXTH

AVENUE



Offered for Dedication

85-20

85-44

VALLEY

SUN

1" = 100'



85-63

85-65

NOTE: This map is prepared for the use of the Washoe County Assessor for assessment and illustrative purposes only. It does not represent a survey of the premises. No liability is assumed as to the sufficiency or the accuracy of the data delineated hereon.

Office of Washoe County Assessor, Nevada - Robert W. McGowan

This area previously shown on _____

Drawn by TWT 01/31/05
 Revised TWT 4/28/05

NOTE: Areas of parcels which are less than 2 acres are shown in square feet.