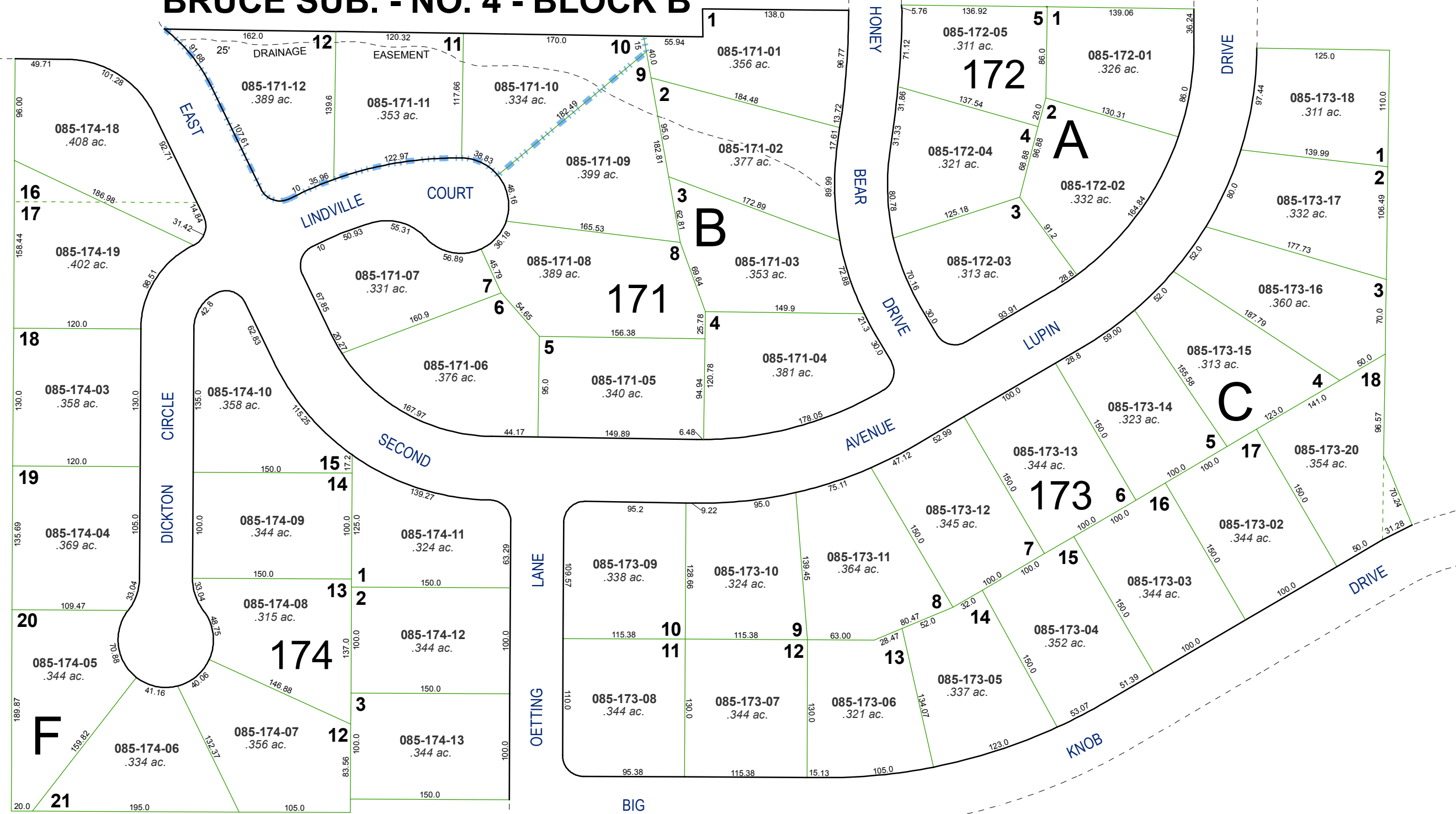


(#1179) BRUCE SUBDIVISION - No. 4

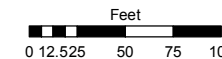
A POR. OF THE SE ¼ OF SEC. 19
T20N - R20E

AMENDED LOTS 10,11 & 12 BRUCE SUB. - NO. 4 - BLOCK B

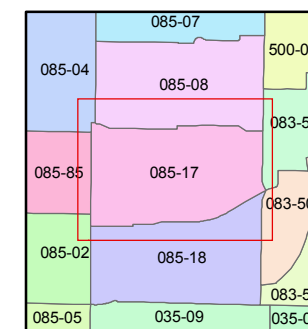
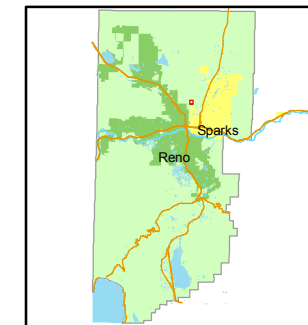


STATE OF NEVADA
WASHOE COUNTY
ASSESSOR'S OFFICE
Joshua G. Wilson, Assessor

1001 East Ninth Street
Building D
Reno, Nevada 89512
(775) 328-2231



1 inch = 100 feet



created by: NLH 8/12/2010

last updated: _____

area previously shown on map(s)

NOTE: This map was prepared for the use of the Washoe County Assessor for assessment and illustrative purposes only. It does not represent a survey of the premises. No liability is assumed as to the sufficiency or accuracy of the data delineated herein.