

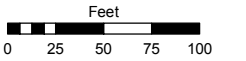
THE N 1/2 OF THE NW 1/4 OF THE NE 1/4
OF SECTION 19, T20N - R20E

Assessor's Map Number

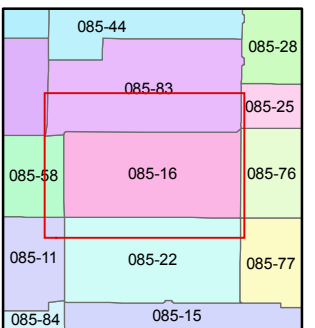
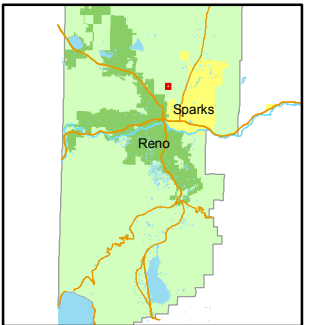
085-16

STATE OF NEVADA
WASHOE COUNTY
ASSESSOR'S OFFICE
Joshua G. Wilson, Assessor

1001 East Ninth Street
Building D
Reno, Nevada 89512
(775) 328-2231



1 inch = 100 feet



created by: KSB 5/03/10

last updated: _____

area previously shown on map(s)

083-15

NOTE: This map was prepared for the use of the Washoe County Assessor for assessment and illustrative purposes only. It does not represent a survey of the premises. No liability is assumed as to the sufficiency or accuracy of the data delineated hereon.

