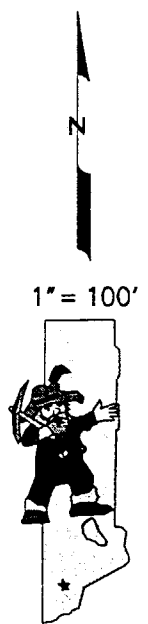
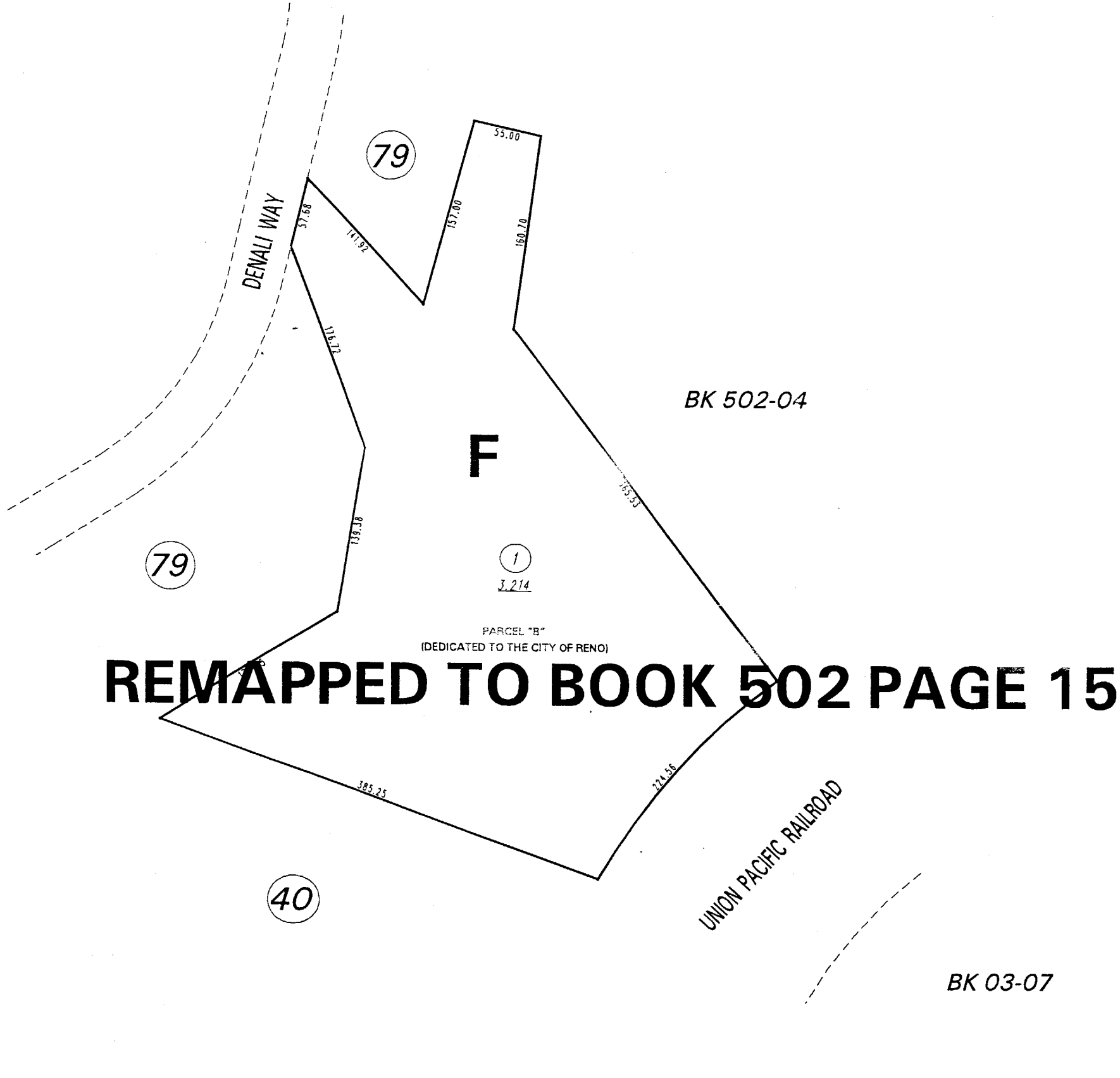


NORTHERN LIGHTS SUBDIVISION - UNIT 2 (#3185)

PORTION SW 1/4 SECTION 23, T20N - R19E



NOTE: This map is prepared for the use of the Washoe County Assessor for assessment and illustrative purposes only. It does not represent a survey of the premises. No liability is assumed as to the sufficiency or the accuracy of the data delineated hereon.

Office of Washoe County Assessor, Nevada - Robert W. McGowan

This area previously shown on _____
 NOTE:
 ASSESSOR'S BLOCK NUMBERS SHOWN IN ELLIPSES
 ASSESSOR'S PARCEL NUMBERS SHOWN IN CIRCLES

Drawn by	GZ 11/21/95
Revised	8/96 DSR 12/20/99