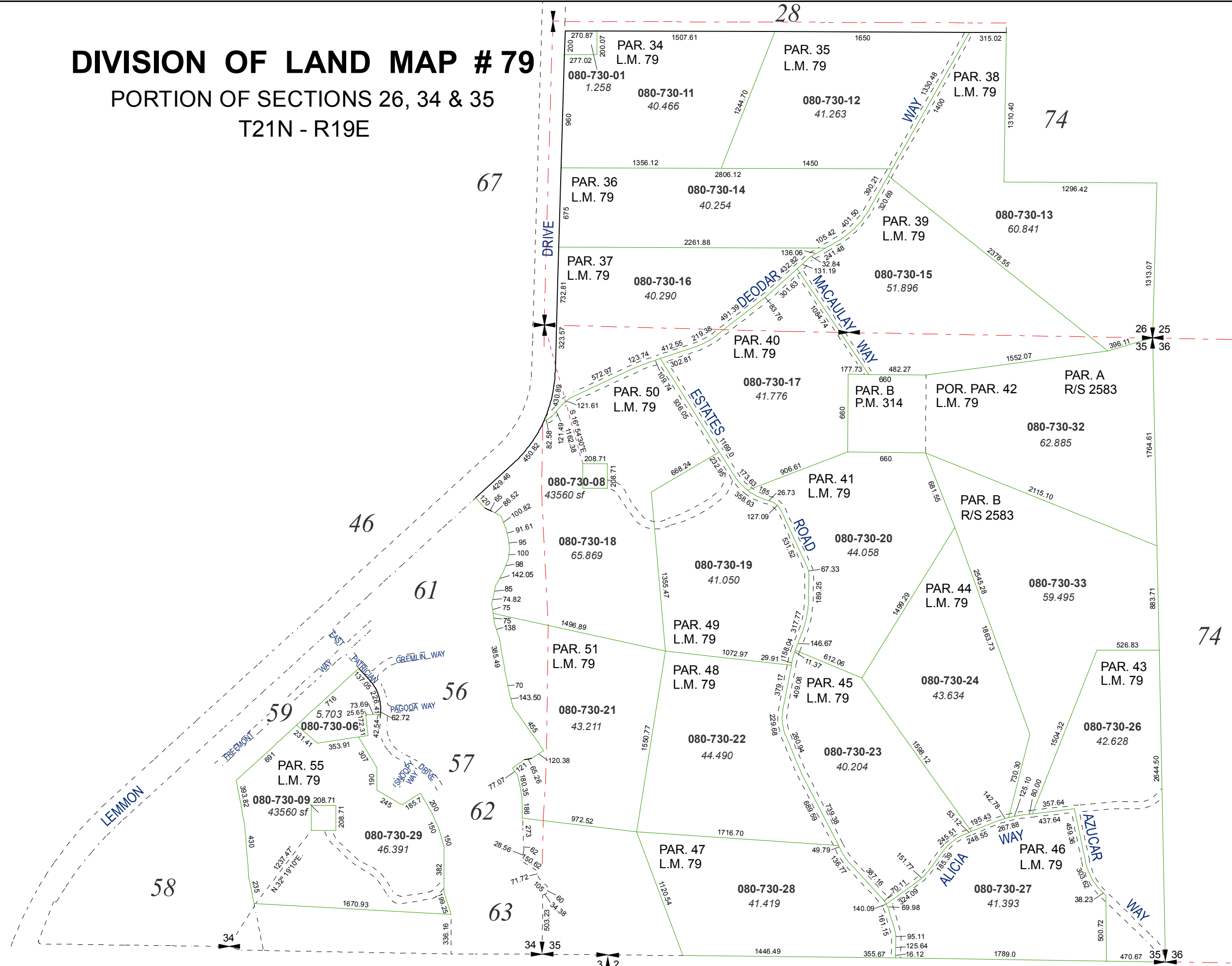


DIVISION OF LAND MAP # 79

PORTION OF SECTIONS 26, 34 & 35
T21N - R19E



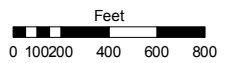
BOOK 552

Assessor's Map Number

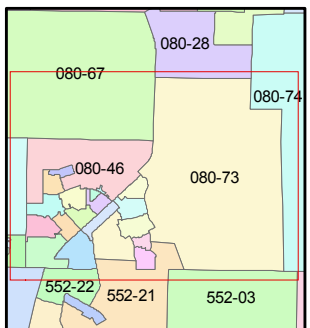
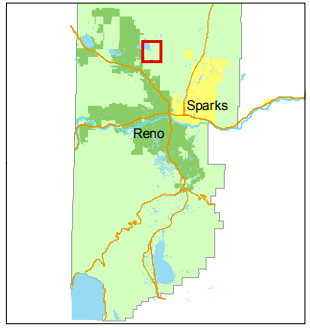
080-73

STATE OF NEVADA
WASHOE COUNTY
ASSESSOR'S OFFICE
Joshua G. Wilson, Assessor

1001 East Ninth Street
Building D
Reno, Nevada 89512
(775) 328-2231



1 inch = 800 feet



created by: TWT 9/28/2009

last updated: TWT 3/24/2011

area previously shown on map(s)

NOTE: This map was prepared for the use of the Washoe County Assessor for assessment and illustrative purposes only. It does not represent a survey of the premises. No liability is assumed as to the sufficiency or accuracy of the data delineated hereon.