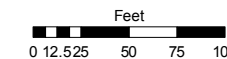
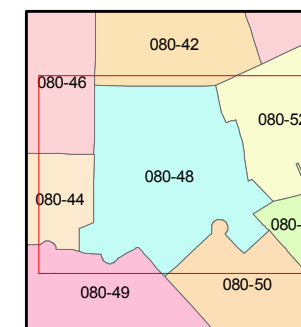
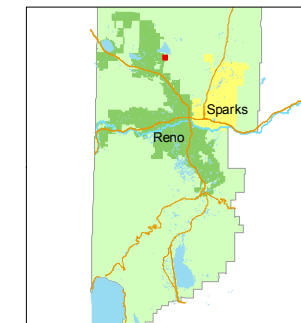


STATE OF NEVADA
WASHOE COUNTY
ASSESSOR'S OFFICE
Joshua G. Wilson, Assessor

1001 East Ninth Street
Building D
Reno, Nevada 89512
(775) 328-2231



1 inch = 100 feet



created by: CFB 06/13/2011

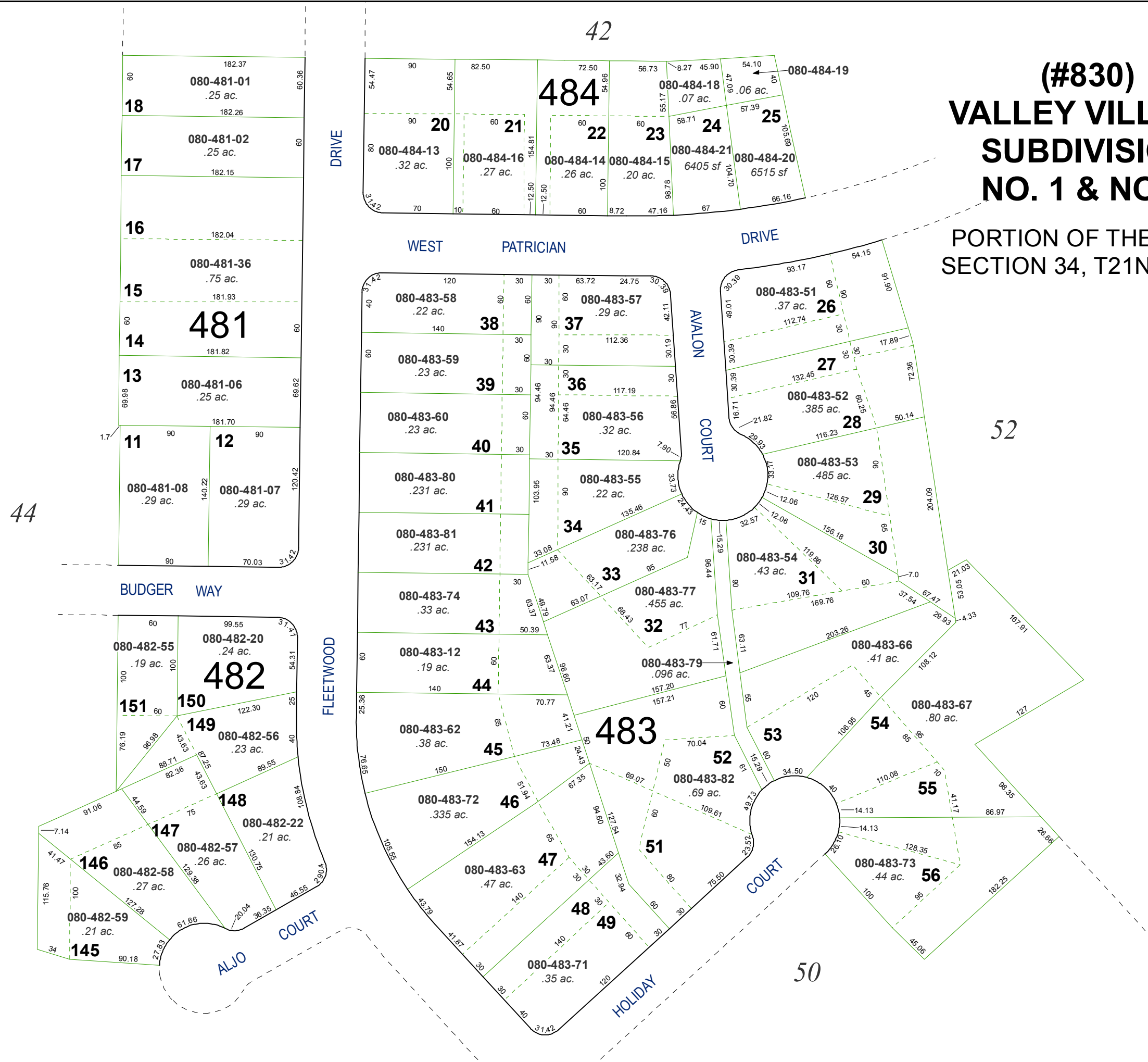
last updated:

area previously shown on map(s)

NOTE: This map was prepared for the use of the Washoe County Assessor for assessment and illustrative purposes only. It does not represent a survey of the premises. No liability is assumed as to the sufficiency or accuracy of the data delineated hereon.

(#830) VALLEY VILLAGE SUBDIVISION NO. 1 & NO. 2

PORTION OF THE W 1/2 SECTION 34, T21N - R19E



42

484

481

482

483

44

52

50