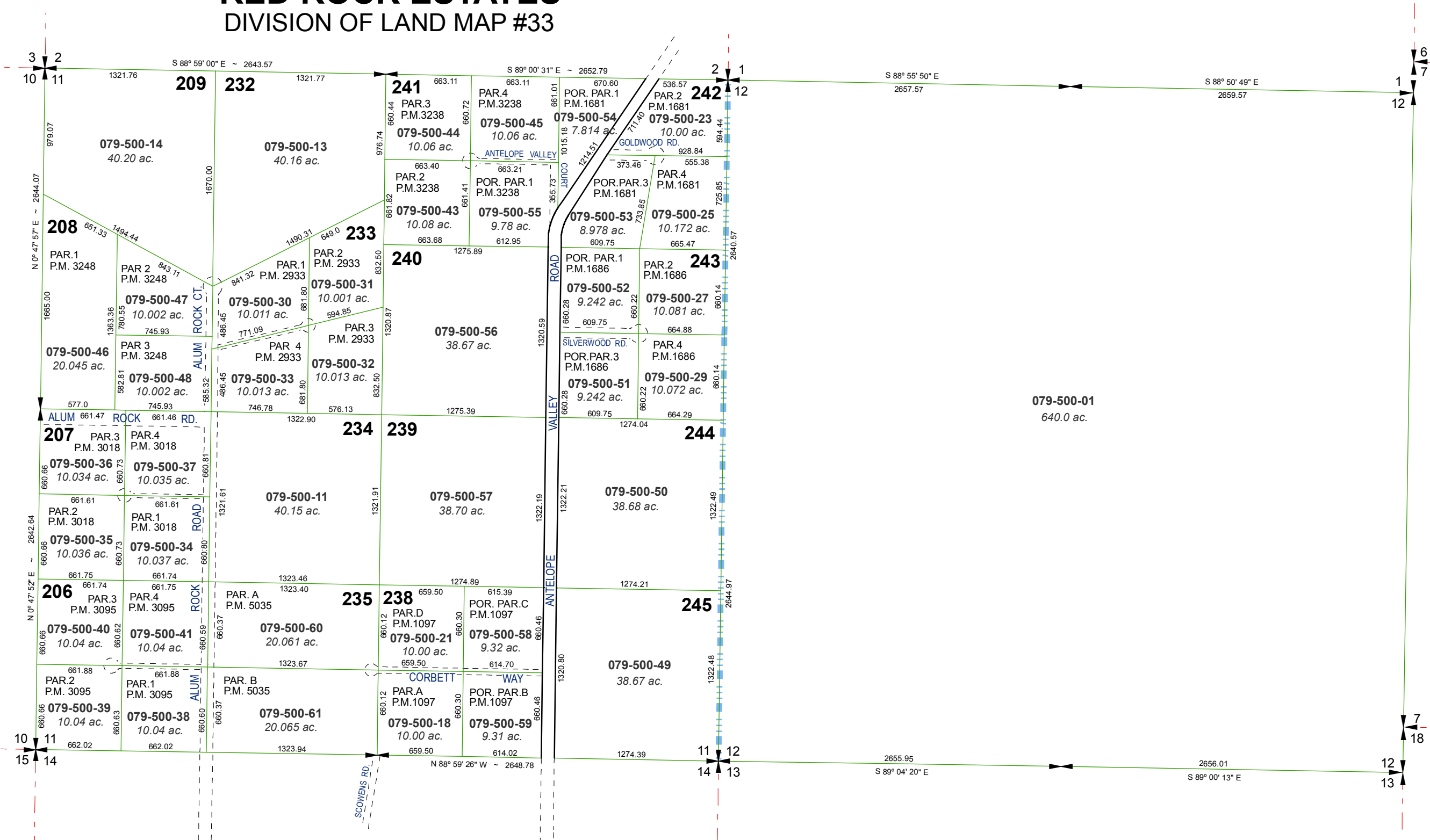


SECTIONS 11 & 12, T22N - R19E

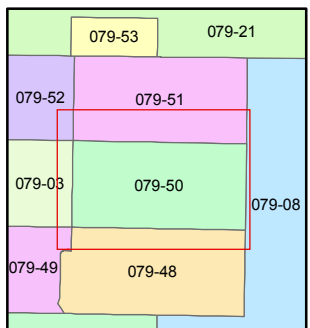
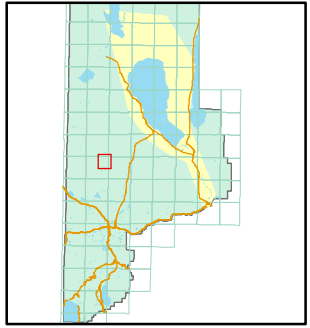
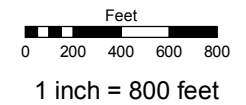
**RED ROCK ESTATES**  
DIVISION OF LAND MAP #33



Assessor's Map Number  
**079-50**

STATE OF NEVADA  
**WASHOE COUNTY**  
ASSESSOR'S OFFICE  
Joshua G. Wilson, Assessor

1001 East Ninth Street  
Building D  
Reno, Nevada 89512  
(775) 328-2231



created by: KSB 10/07/10  
last updated: \_\_\_\_\_

area previously shown on map(s)  
079-03, 079-05

NOTE: This map was prepared for the use of the Washoe County Assessor for assessment and illustrative purposes only. It does not represent a survey of the premises. No liability is assumed as to the sufficiency or accuracy of the data delineated hereon.