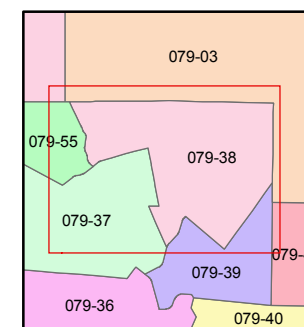
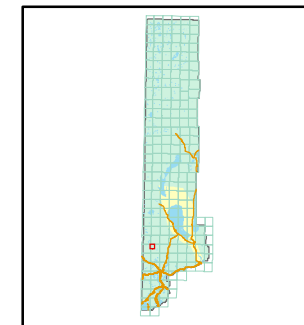


1 inch = 800 feet

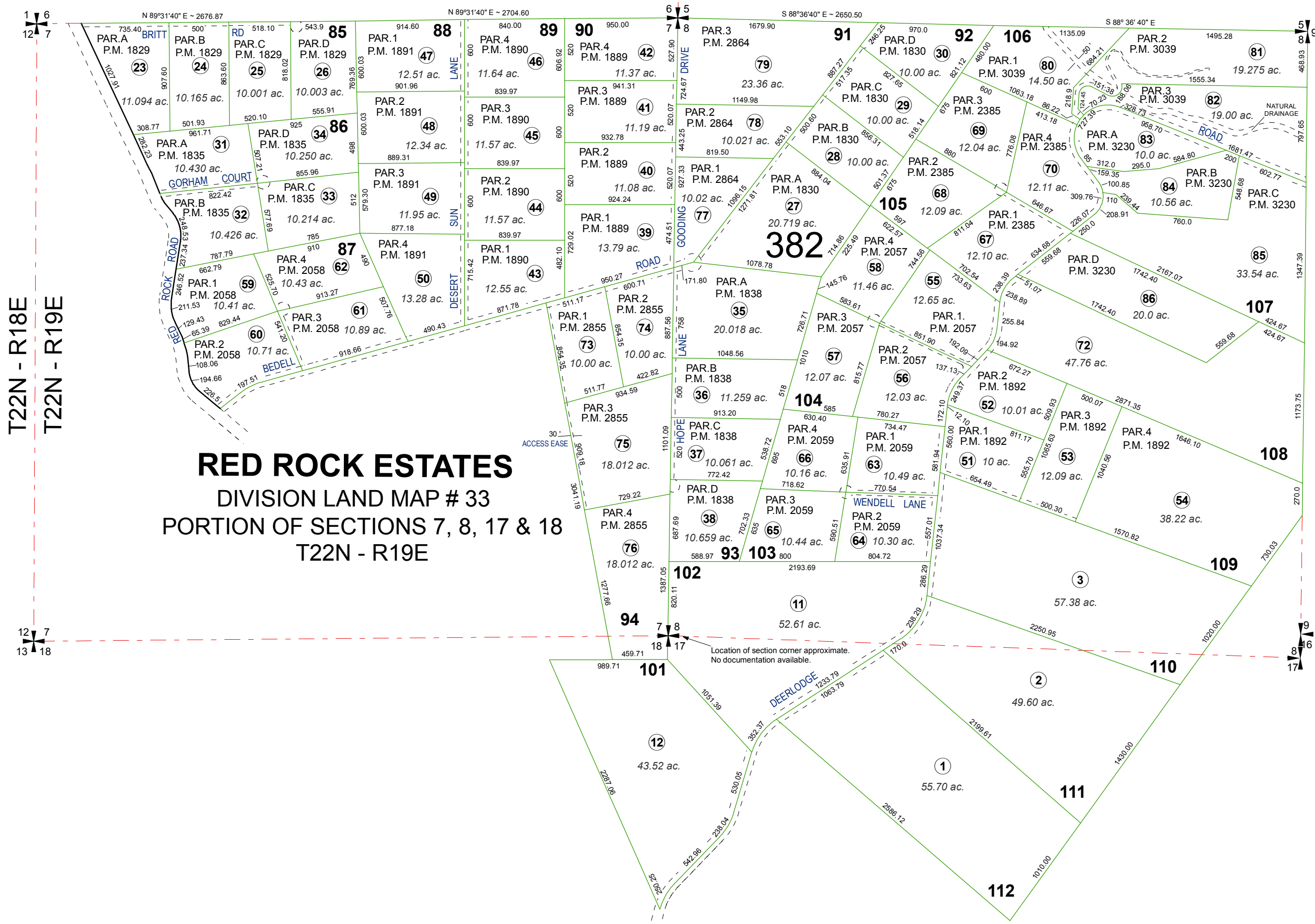


created by: CFB 03/17/2010

last updated: _____

area previously shown on map(s) _____

NOTE: This map was prepared for the use of the Washoe County Assessor for assessment and illustrative purposes only. It does not represent a survey of the premises. No liability is assumed as to the sufficiency or accuracy of the data delineated hereon.



RED ROCK ESTATES
DIVISION LAND MAP # 33
PORTION OF SECTIONS 7, 8, 17 & 18
T22N - R19E

T22N - R18E
T22N - R19E

12 7
13 18

1 6
12 7

Location of section corner approximate.
No documentation available.