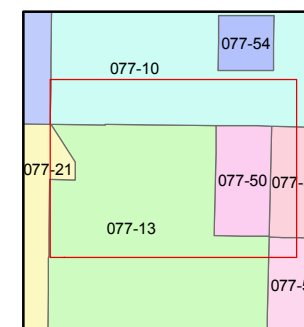
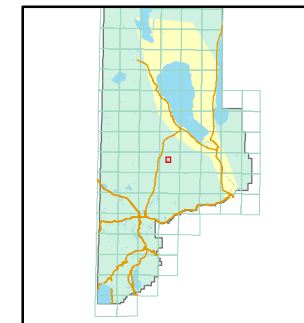


1 inch = 400 feet



created by: CFB 02/10/2011

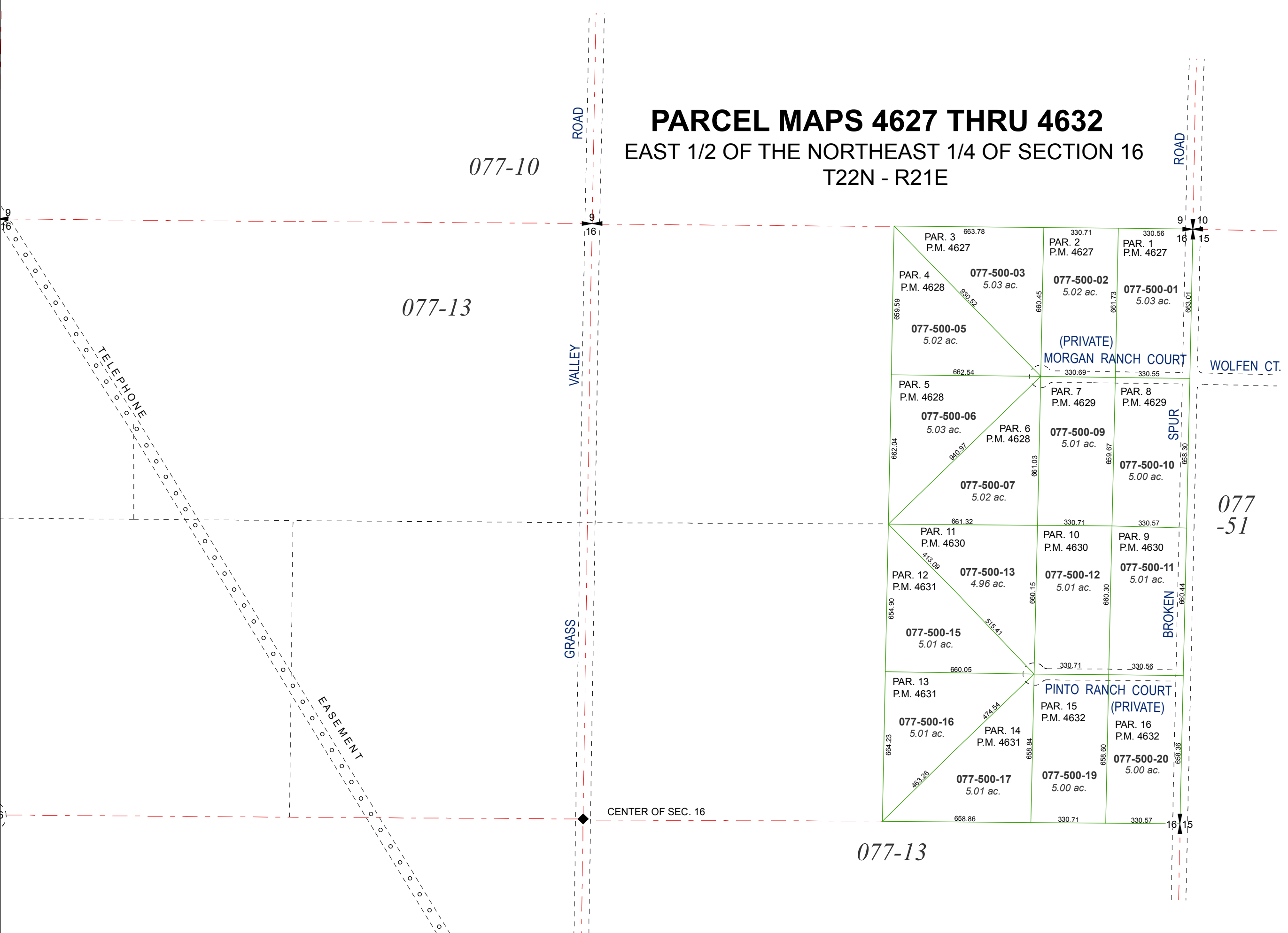
last updated: _____

area previously shown on map(s)

NOTE: This map was prepared for the use of the Washoe County Assessor for assessment and illustrative purposes only. It does not represent a survey of the premises. No liability is assumed as to the sufficiency or accuracy of the data delineated hereon.

PARCEL MAPS 4627 THRU 4632

EAST 1/2 OF THE NORTHEAST 1/4 OF SECTION 16 T22N - R21E



077-13

077-51

077-10

077-13

ROAD

VALLEY

GRASS

ROAD

SPUR

BROKEN

WOLFEN CT.

(PRIVATE)
MORGAN RANCH COURT

PINTO RANCH COURT
(PRIVATE)

CENTER OF SEC. 16

TELEPHONE

EASEMENT

| | | |
|---------------------------------|---------------------------------|---------------------------------|
| PAR. 3 P.M. 4627 663.78 | PAR. 2 P.M. 4627 330.71 | PAR. 1 P.M. 4627 330.56 |
| PAR. 4 P.M. 4628 659.59 | 077-50-02 5.02 ac. 660.45 | 077-50-01 5.03 ac. 661.73 |
| 077-50-03 5.03 ac. 930.52 | (PRIVATE) MORGAN RANCH COURT | 077-50-10 5.00 ac. 668.30 |
| PAR. 5 P.M. 4628 662.04 | PAR. 7 P.M. 4629 661.03 | PAR. 8 P.M. 4629 659.67 |
| 077-50-06 5.03 ac. 940.97 | 077-50-09 5.01 ac. 661.03 | 077-50-11 5.01 ac. 660.30 |
| PAR. 6 P.M. 4628 662.04 | 077-50-07 5.02 ac. 661.32 | PAR. 9 P.M. 4630 330.57 |
| 077-50-15 5.01 ac. 515.41 | PAR. 11 P.M. 4630 661.32 | PAR. 10 P.M. 4630 330.71 |
| PAR. 12 P.M. 4631 654.90 | 077-50-13 4.96 ac. 413.08 | 077-50-12 5.01 ac. 660.15 |
| 077-50-16 5.01 ac. 463.26 | PAR. 13 P.M. 4631 664.23 | PAR. 15 P.M. 4632 658.60 |
| PAR. 14 P.M. 4631 658.84 | 077-50-17 5.01 ac. 474.54 | 077-50-19 5.00 ac. 658.60 |
| 077-50-20 5.00 ac. 658.60 | PAR. 16 P.M. 4632 658.60 | 077-50-20 5.00 ac. 658.60 |
| PAR. 13 P.M. 4631 664.23 | 077-50-17 5.01 ac. 463.26 | 077-50-19 5.00 ac. 658.60 |
| 077-50-16 5.01 ac. 463.26 | PAR. 15 P.M. 4632 658.60 | PAR. 16 P.M. 4632 658.60 |
| PAR. 14 P.M. 4631 658.84 | 077-50-17 5.01 ac. 463.26 | 077-50-19 5.00 ac. 658.60 |
| 077-50-17 5.01 ac. 463.26 | PAR. 15 P.M. 4632 658.60 | PAR. 16 P.M. 4632 658.60 |
| PAR. 16 P.M. 4632 658.60 | 077-50-20 5.00 ac. 658.60 | 077-50-20 5.00 ac. 658.60 |