

# LAND MAP #14

## PALOMINO VALLEY UNIT 8

### SOUTHEAST 1/4 OF SECTION 4 T22N - R21E

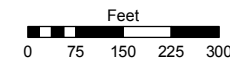
Assessor's Map Number

**077-49**

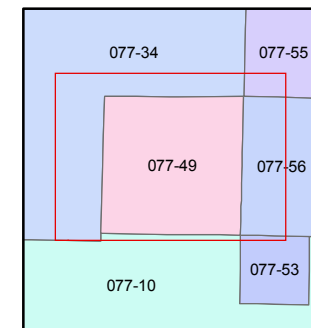
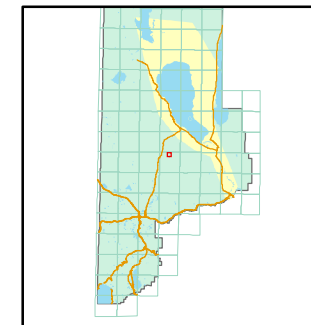
STATE OF NEVADA  
**WASHOE COUNTY**  
**ASSESSOR'S OFFICE**

Joshua G. Wilson, Assessor

1001 East Ninth Street  
 Building D  
 Reno, Nevada 89512  
 (775) 328-2231



1 inch = 300 feet

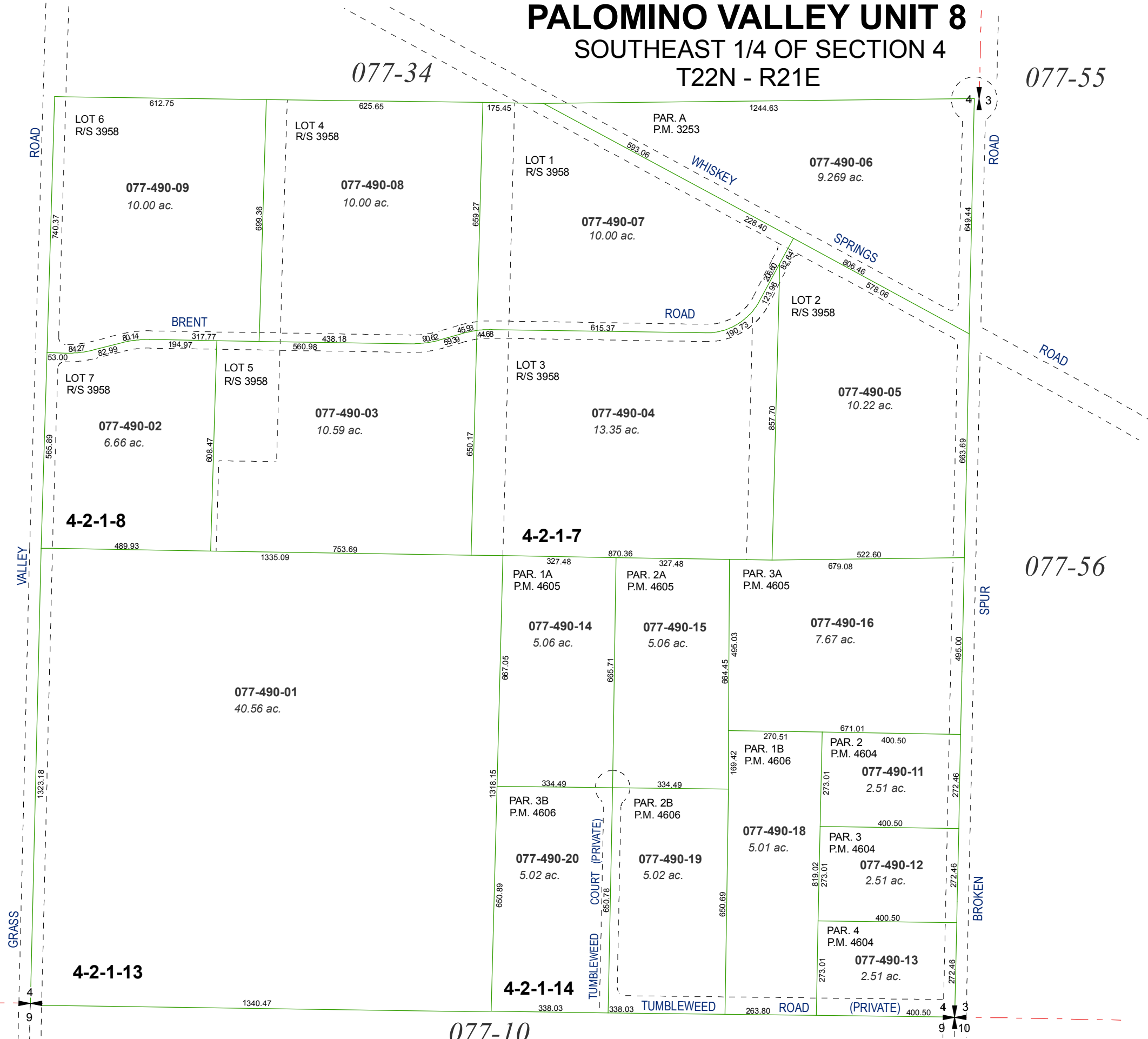


created by: CFB 02/10/2011

last updated: \_\_\_\_\_

area previously shown on map(s)  
 \_\_\_\_\_

NOTE: This map was prepared for the use of the Washoe County Assessor for assessment and illustrative purposes only. It does not represent a survey of the premises. No liability is assumed as to the sufficiency or accuracy of the data delineated hereon.



077-34

VALLEY

GRASS

077-10

077-56

077-55