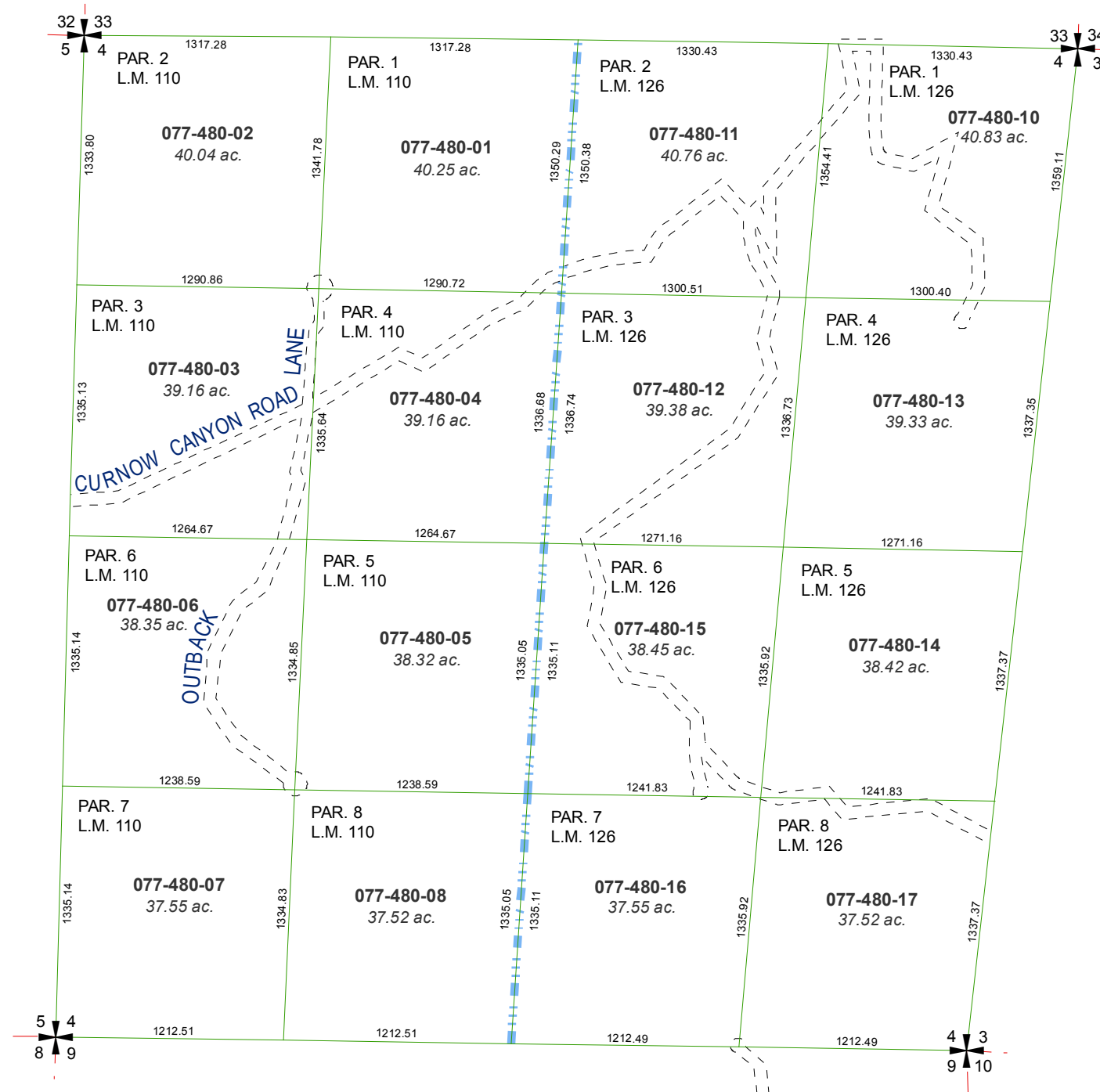


MAP OF DIVISION INTO LARGE PARCELS #110 MAP OF DIVISION INTO LARGE PARCELS #126

SECTION 4, T21N - R21E



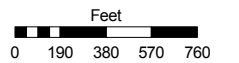
Assessor's Map Number

077-48

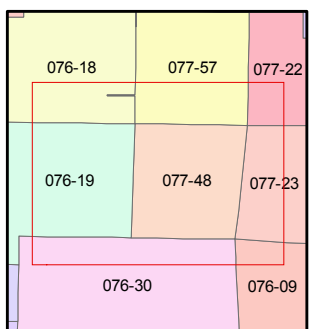
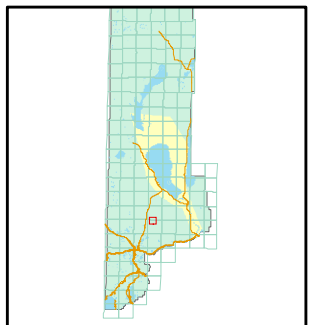
STATE OF NEVADA
WASHOE COUNTY
ASSESSOR'S OFFICE

Joshua G. Wilson, Assessor

1001 East Ninth Street
 Building D
 Reno, Nevada 89512
 (775) 328-2231



1 inch = 800 feet



created by: TWT 5/2/2011

last updated: _____

area previously shown on map(s)

NOTE: This map was prepared for the use of the Washoe County Assessor for assessment and illustrative purposes only. It does not represent a survey of the premises. No liability is assumed as to the sufficiency or accuracy of the data delineated hereon.