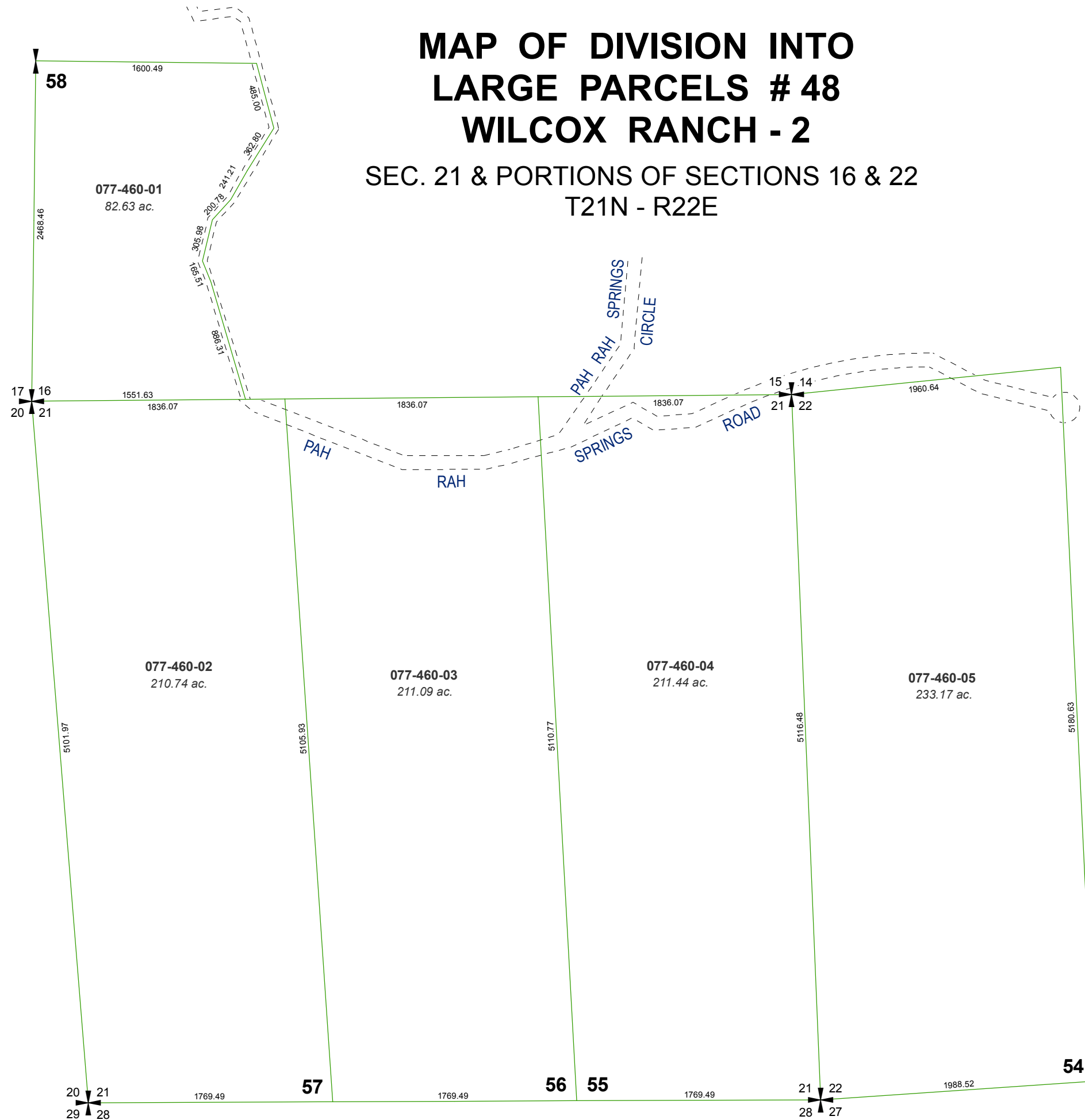


MAP OF DIVISION INTO LARGE PARCELS # 48 WILCOX RANCH - 2

SEC. 21 & PORTIONS OF SECTIONS 16 & 22
T21N - R22E



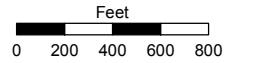
Assessor's Map Number

077-46

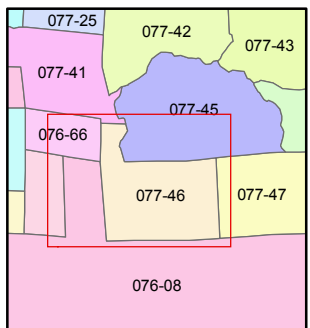
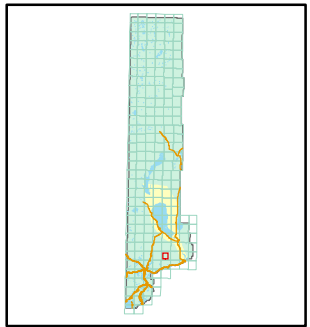
STATE OF NEVADA
WASHOE COUNTY
ASSESSOR'S OFFICE

Joshua G. Wilson, Assessor

1001 East Ninth Street
Building D
Reno, Nevada 89512
(775) 328-2231



1 inch = 800 feet



created by: TWT 5/4/2011

last updated: _____

area previously shown on map(s)

NOTE: This map was prepared for the use of the Washoe County Assessor for assessment and illustrative purposes only. It does not represent a survey of the premises. No liability is assumed as to the sufficiency or accuracy of the data delineated hereon.