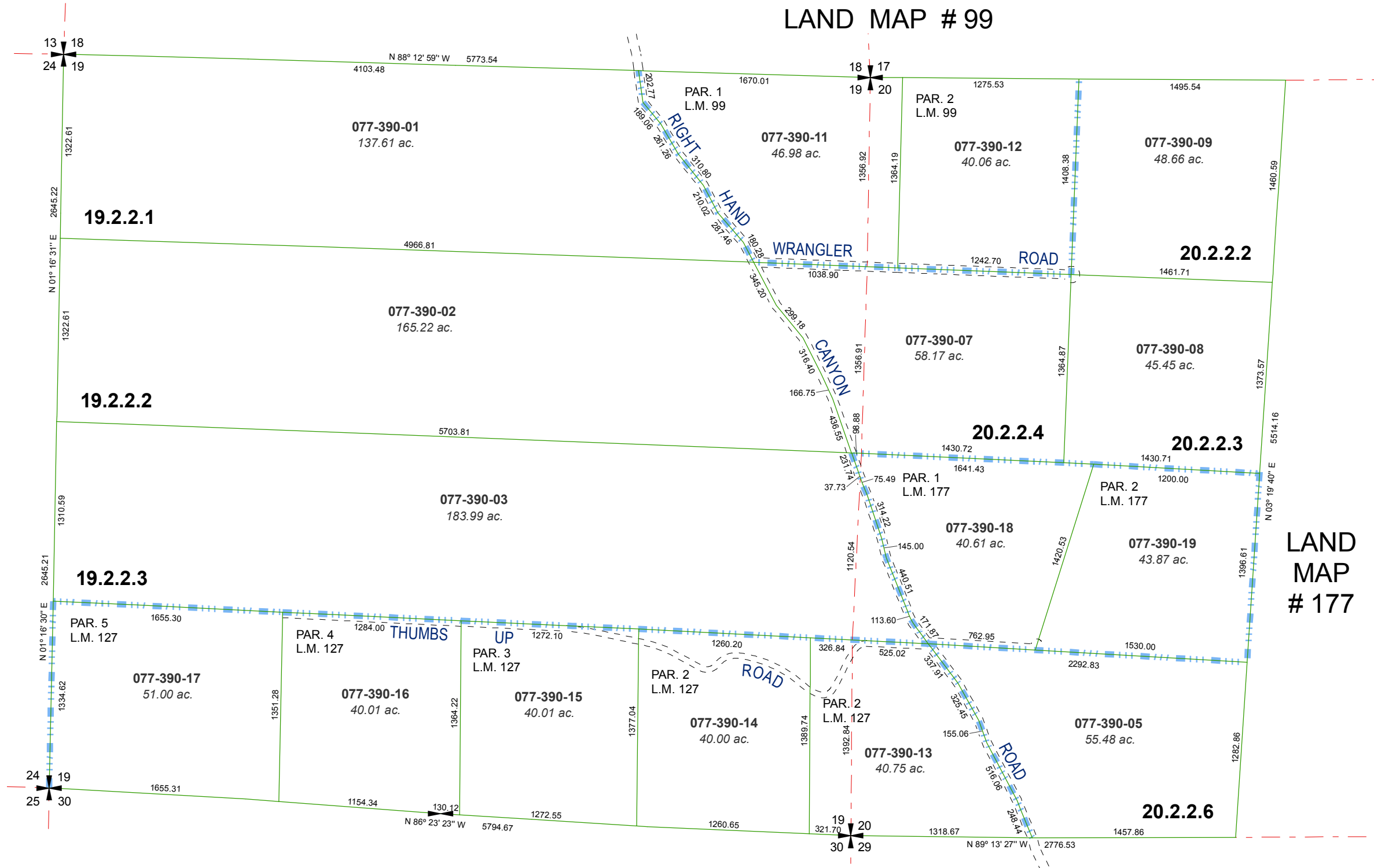


MAP OF DIVISION INTO LARGE PARCELS #18 PALOMINO VALLEY - UNIT NO. 12

RECORD OF SURVEY #1068
SECTION 19 & W 1/2 OF SECTION 20
T22N - R22E

LAND MAP # 99



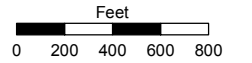
MAP OF DIVISION INTO LARGE PARCELS #127

Assessor's Map Number

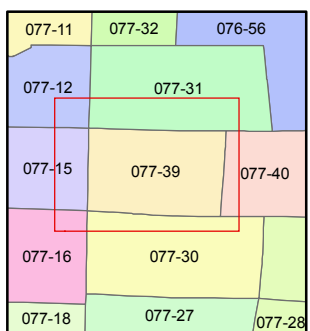
077-39

STATE OF NEVADA
WASHOE COUNTY
ASSESSOR'S OFFICE
Joshua G. Wilson, Assessor

1001 East Ninth Street
Building D
Reno, Nevada 89512
(775) 328-2231



1 inch = 800 feet



created by: TWT 4/27/2011

last updated: _____

area previously shown on map(s) _____

NOTE: This map was prepared for the use of the Washoe County Assessor for assessment and illustrative purposes only. It does not represent a survey of the premises. No liability is assumed as to the sufficiency or accuracy of the data delineated hereon.