

MAP OF DIVISION INTO LARGE PARCELS # 16 PALOMINO VALLEY - UNIT NO. 11

RECORD OF SURVEY #1023 & 1024
SECTIONS 29 & 30, T22N - R22E

LAND MAP
73

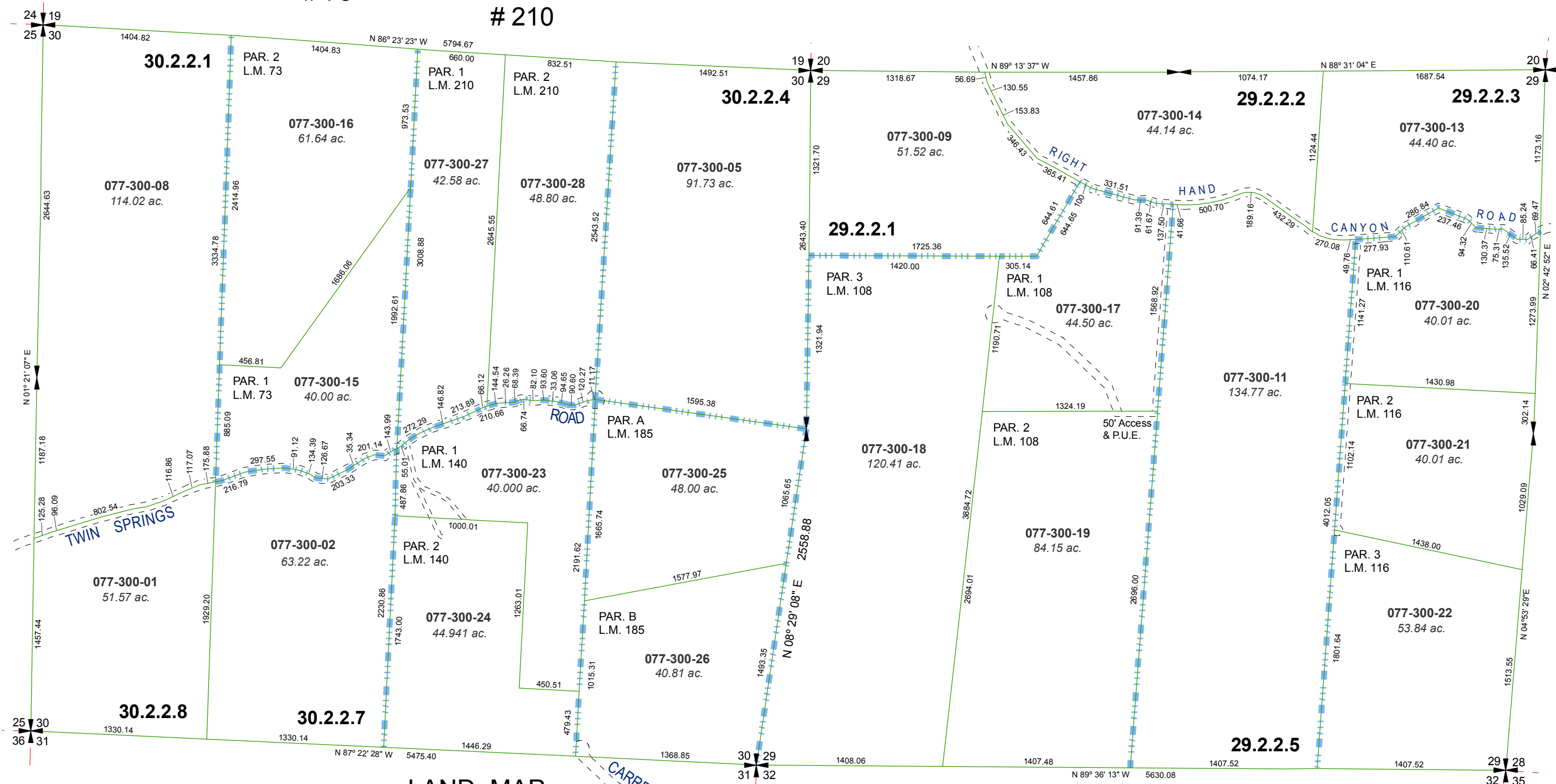
LAND MAP
210

LAND MAP
140

LAND MAP
185

LAND MAP # 108

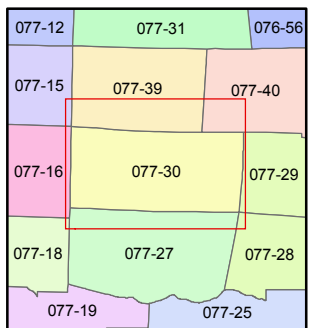
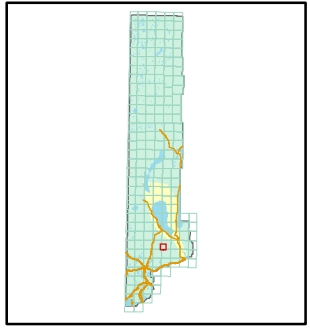
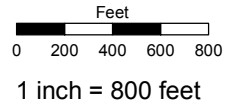
LAND MAP
116



Assessor's Map Number
077-30

STATE OF NEVADA
WASHOE COUNTY
ASSESSOR'S OFFICE
Joshua G. Wilson, Assessor

1001 East Ninth Street
Building D
Reno, Nevada 89512
(775) 328-2231



created by: TWT 4/27/2011
last updated: _____
area previously shown on map(s) _____

NOTE: This map was prepared for the use of the Washoe County Assessor for assessment and illustrative purposes only. It does not represent a survey of the premises. No liability is assumed as to the sufficiency or accuracy of the data delineated hereon.