

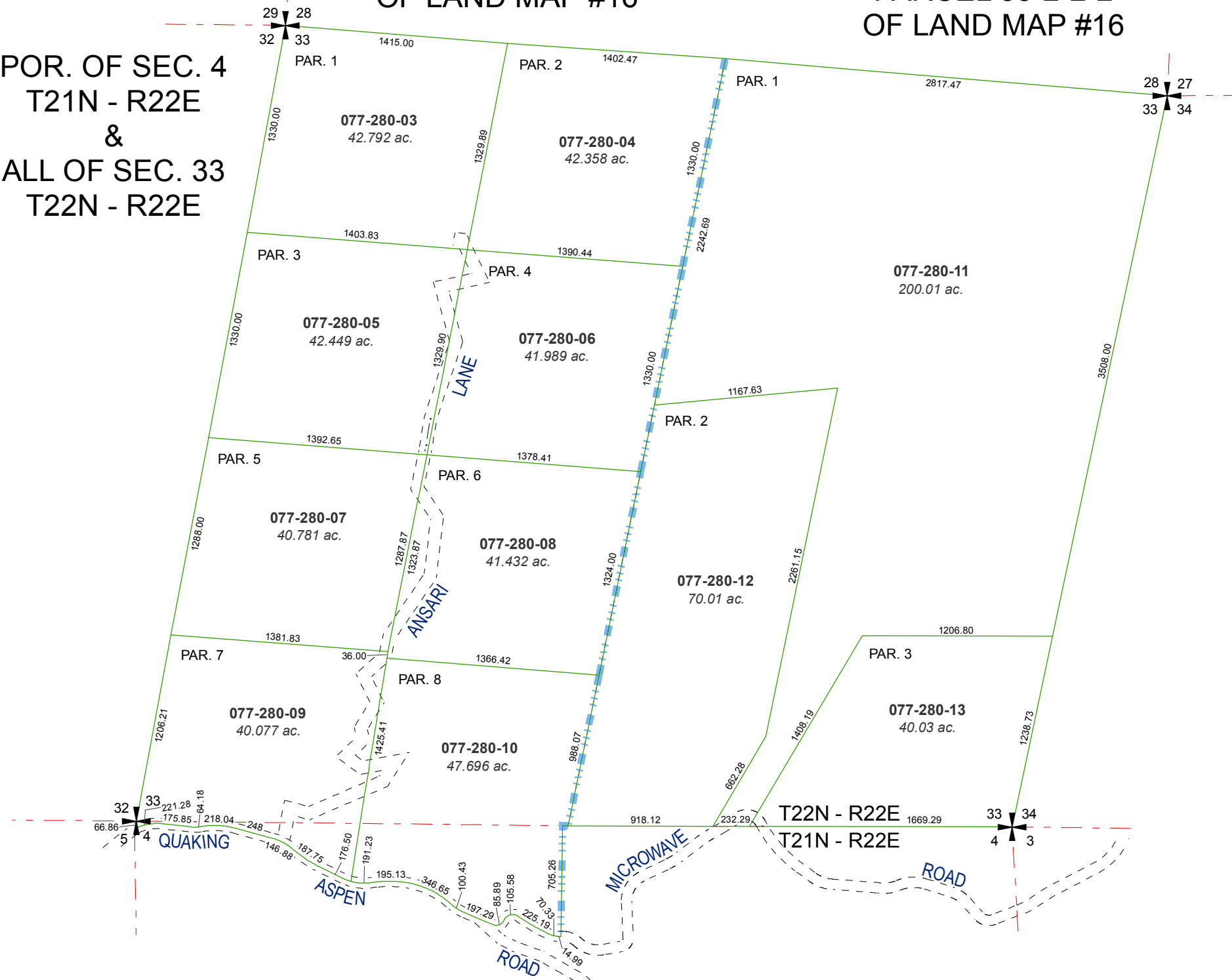
MAP OF DIVISION INTO LARGE PARCELS #93

A DIVISION OF
PARCEL 33-2-2-1
OF LAND MAP #16

MAP OF DIVISION INTO LARGE PARCELS #200

A DIVISION OF
PARCEL 33-2-2-2
OF LAND MAP #16

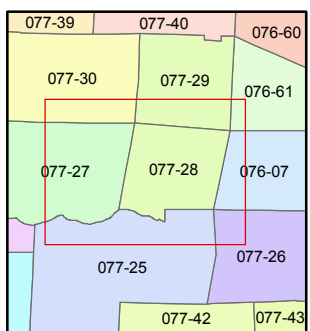
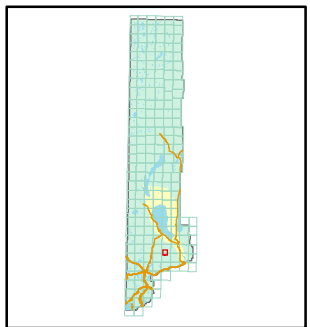
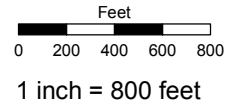
POR. OF SEC. 4
T21N - R22E
&
ALL OF SEC. 33
T22N - R22E



Assessor's Map Number
077-28

STATE OF NEVADA
WASHOE COUNTY
ASSESSOR'S OFFICE
Joshua G. Wilson, Assessor

1001 East Ninth Street
Building D
Reno, Nevada 89512
(775) 328-2231



created by: TWT 4/28/2011

last updated: _____

area previously shown on map(s)

NOTE: This map was prepared for the use of the Washoe County Assessor for assessment and illustrative purposes only. It does not represent a survey of the premises. No liability is assumed as to the sufficiency or accuracy of the data delineated hereon.