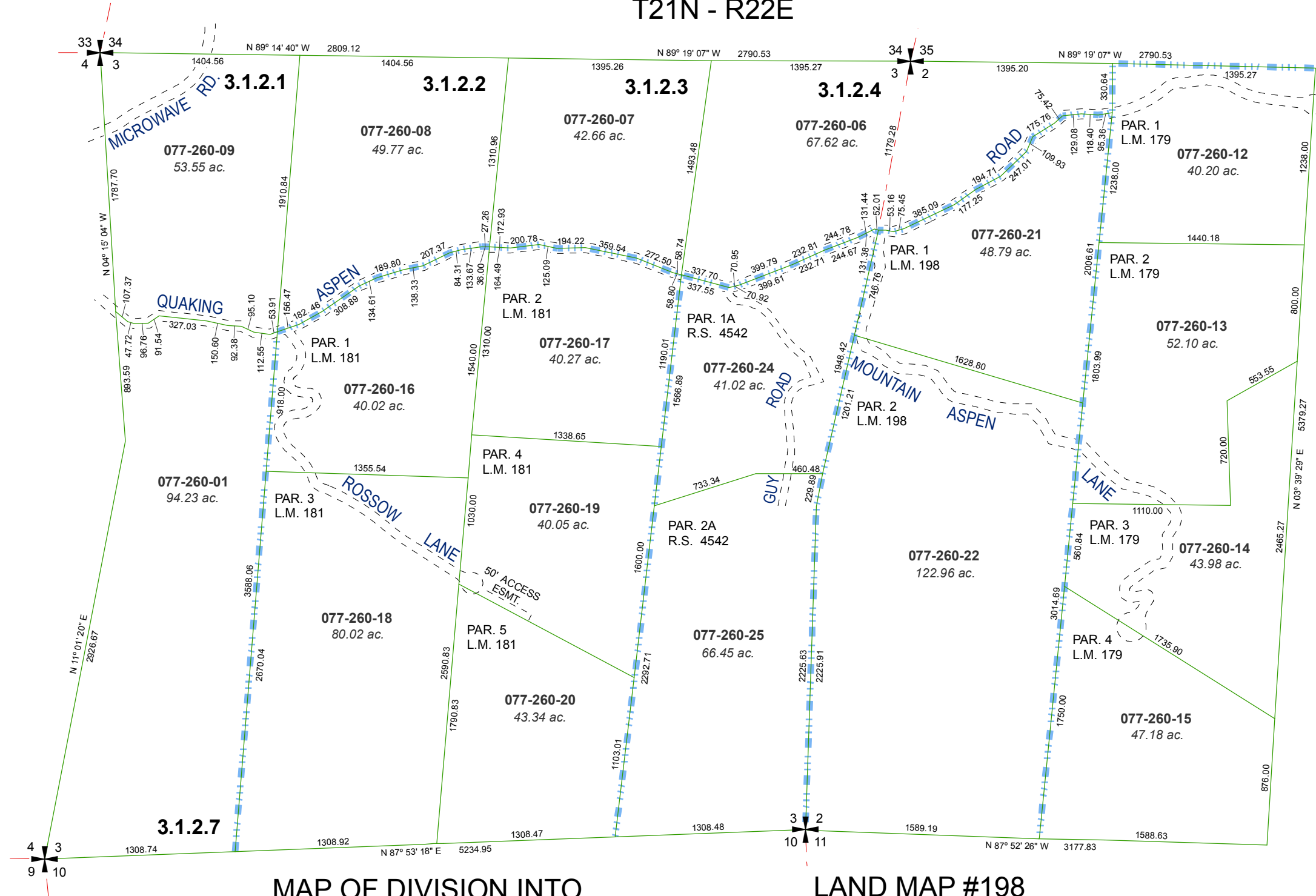


MAP OF DIVISION INTO LARGE PARCELS #16 PALOMINO VALLEY - UNIT NO. 11

RECORD OF SURVEY #1027
SECTION 3 & E 1/2 OF SECTION 2
T21N - R22E



MAP OF DIVISION INTO
LARGE PARCELS #16

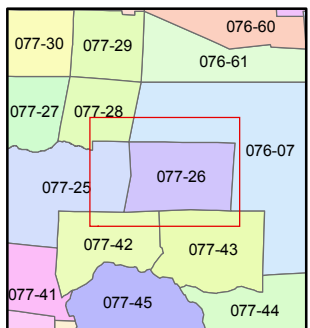
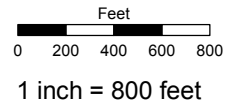
LAND MAP #198

LAND MAP #179

Assessor's Map Number
077-26

STATE OF NEVADA
WASHOE COUNTY
ASSESSOR'S OFFICE
Joshua G. Wilson, Assessor

1001 East Ninth Street
Building D
Reno, Nevada 89512
(775) 328-2231



created by: TWT 4/28/2011

last updated: _____

area previously shown on map(s)

NOTE: This map was prepared for the use of the Washoe County Assessor for assessment and illustrative purposes only. It does not represent a survey of the premises. No liability is assumed as to the sufficiency or accuracy of the data delineated hereon.