

PALOMINO VALLEY UNIT 10

MAP OF DIVISION INTO LARGE PARCELS #15

SECTIONS 33 & 34 & A PORTION OF SECTION 32

T22N - R21E

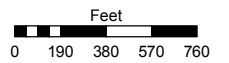
Assessor's Map Number

077-22

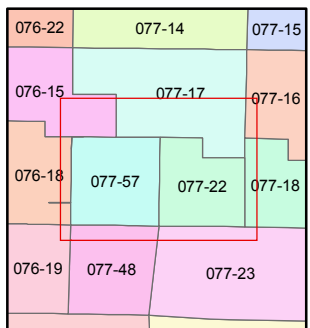
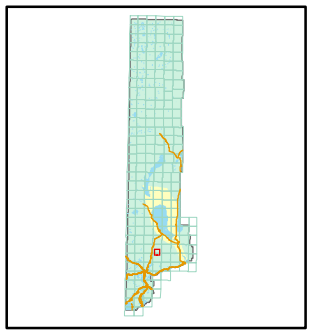
STATE OF NEVADA
WASHOE COUNTY
ASSESSOR'S OFFICE

Joshua G. Wilson, Assessor

1001 East Ninth Street
 Building D
 Reno, Nevada 89512
 (775) 328-2231



1 inch = 800 feet

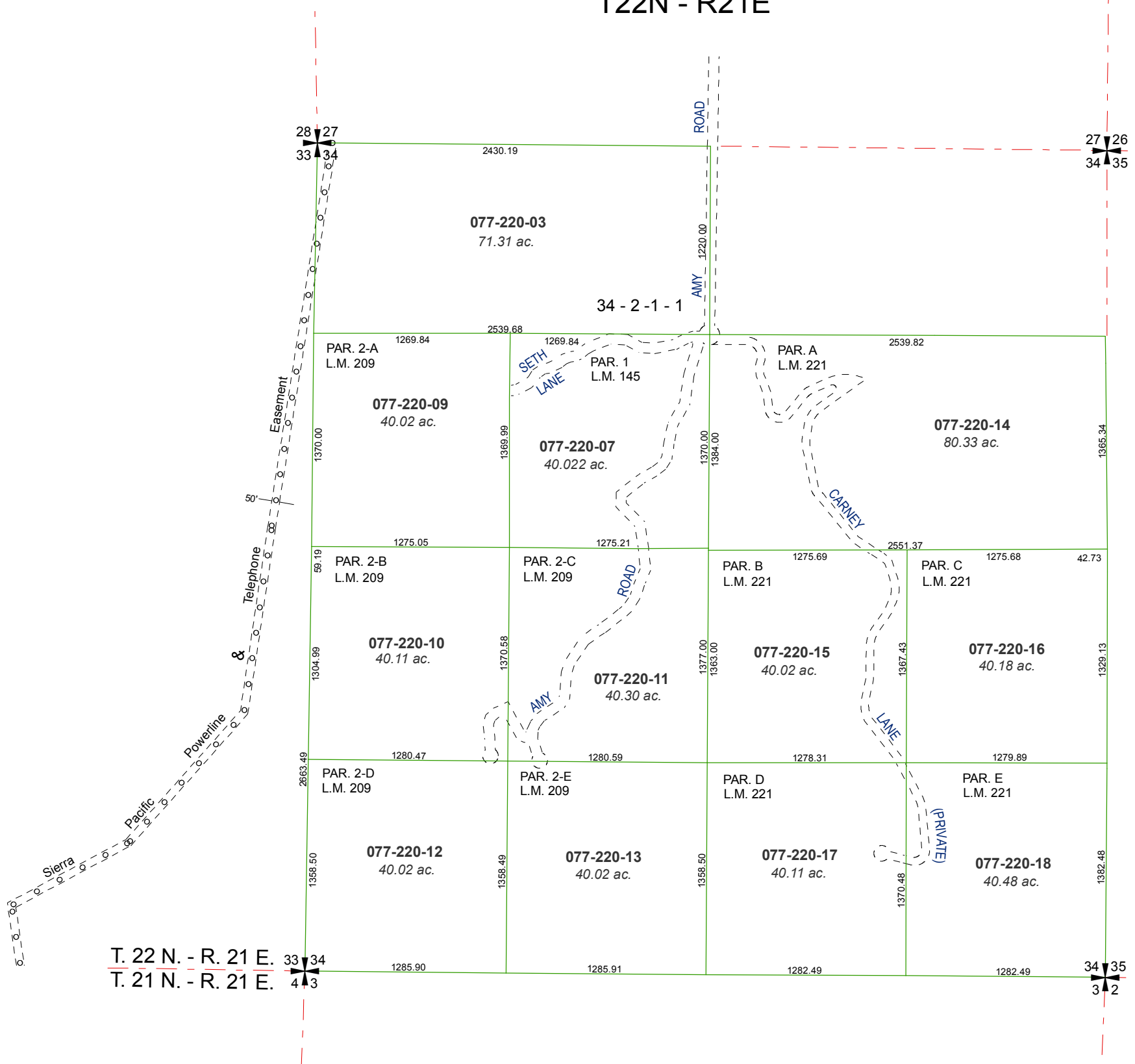


created by: CFB 02/25/2010

last updated: _____

area previously shown on map(s) _____

NOTE: This map was prepared for the use of the Washoe County Assessor for assessment and illustrative purposes only. It does not represent a survey of the premises. No liability is assumed as to the sufficiency or accuracy of the data delineated hereon.



T. 22 N. - R. 21 E. 33 34
 T. 21 N. - R. 21 E. 4 3

34 35
 3 2