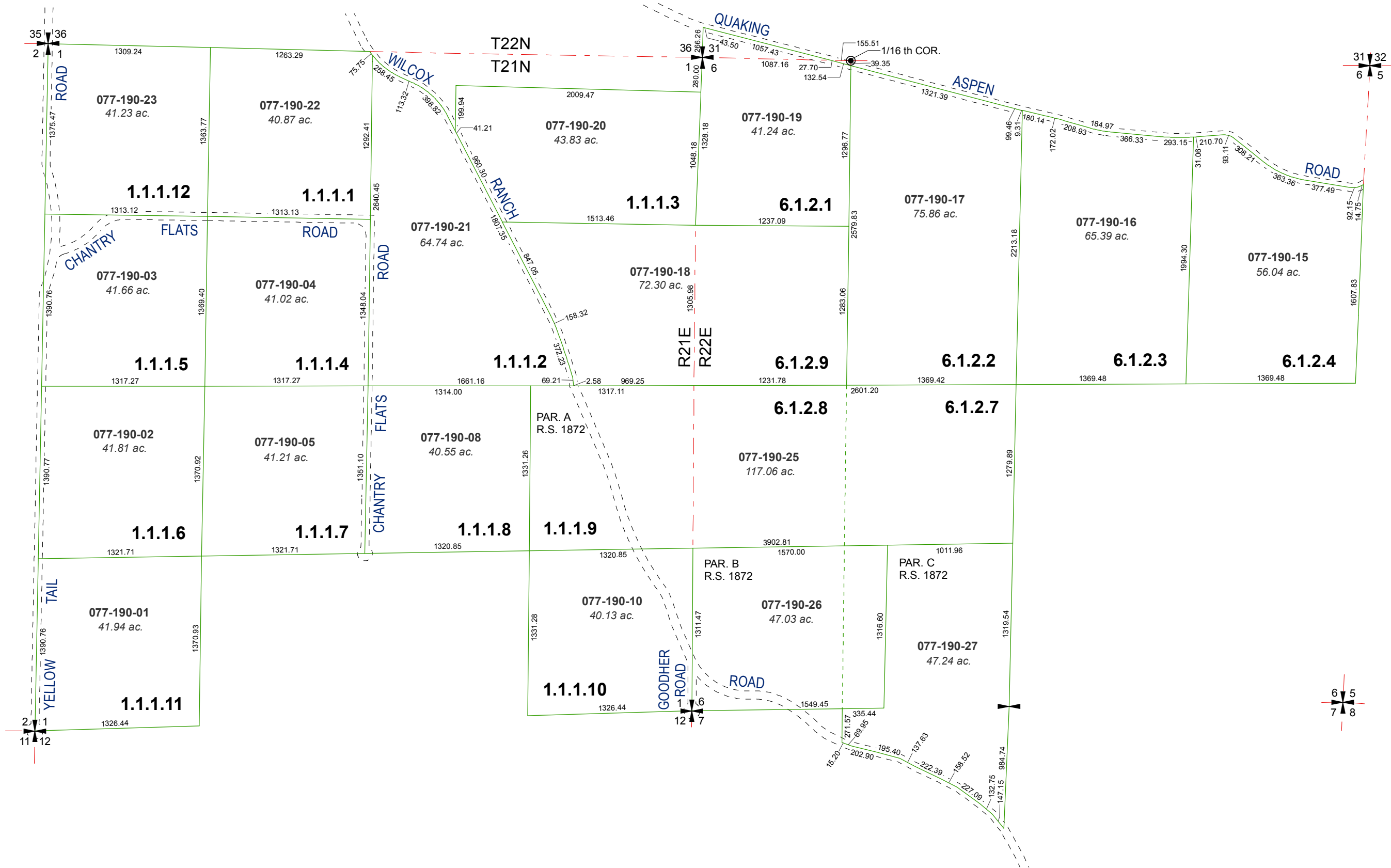


# MAP OF DIVISION INTO LARGE PARCELS #2 PALOMINO VALLEY - UNIT 2

POR. OF SEC. 1, T21N - R21E & POR. OF SEC. 6, T21N - R22E

RECORD OF SURVEY #930

RECORD OF SURVEY #931

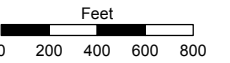


Assessor's Map Number

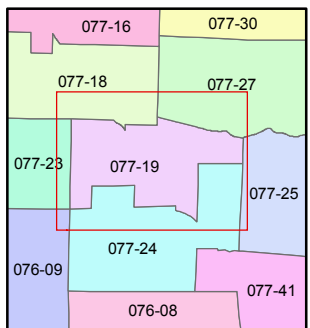
**077-19**

STATE OF NEVADA  
**WASHOE COUNTY**  
ASSESSOR'S OFFICE  
Joshua G. Wilson, Assessor

1001 East Ninth Street  
Building D  
Reno, Nevada 89512  
(775) 328-2231



1 inch = 800 feet



created by: TWT 5/2/2011

last updated: \_\_\_\_\_

area previously shown on map(s) \_\_\_\_\_

NOTE: This map was prepared for the use of the Washoe County Assessor for assessment and illustrative purposes only. It does not represent a survey of the premises. No liability is assumed as to the sufficiency or accuracy of the data delineated hereon.