

(#1631) GERLACH

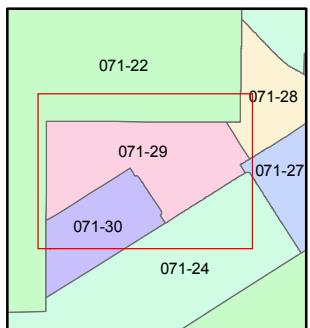
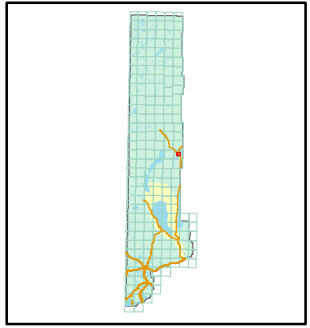
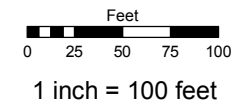
PORTION OF THE SW 1/4 OF SEC. 15
T32N - R23E



Assessor's Map Number
071-29

STATE OF NEVADA
WASHOE COUNTY
ASSESSOR'S OFFICE

Joshua G. Wilson, Assessor
1001 East Ninth Street
Building D
Reno, Nevada 89512
(775) 328-2231



created by: TWT 7/1/2010
last updated: CFB 12/21/2010

area previously shown on map(s)

NOTE: This map was prepared for the use of the Washoe County Assessor for assessment and illustrative purposes only. It does not represent a survey of the premises. No liability is assumed as to the sufficiency or accuracy of the data delineated hereon.