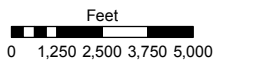
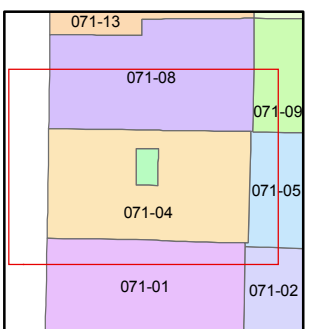


STATE OF NEVADA
WASHOE COUNTY
ASSESSOR'S OFFICE
 Joshua G. Wilson, Assessor

1001 East Ninth Street
 Building D
 Reno, Nevada 89512
 (775) 328-2231



1 inch = 5,280 feet



created by: CFB 12/01/2010

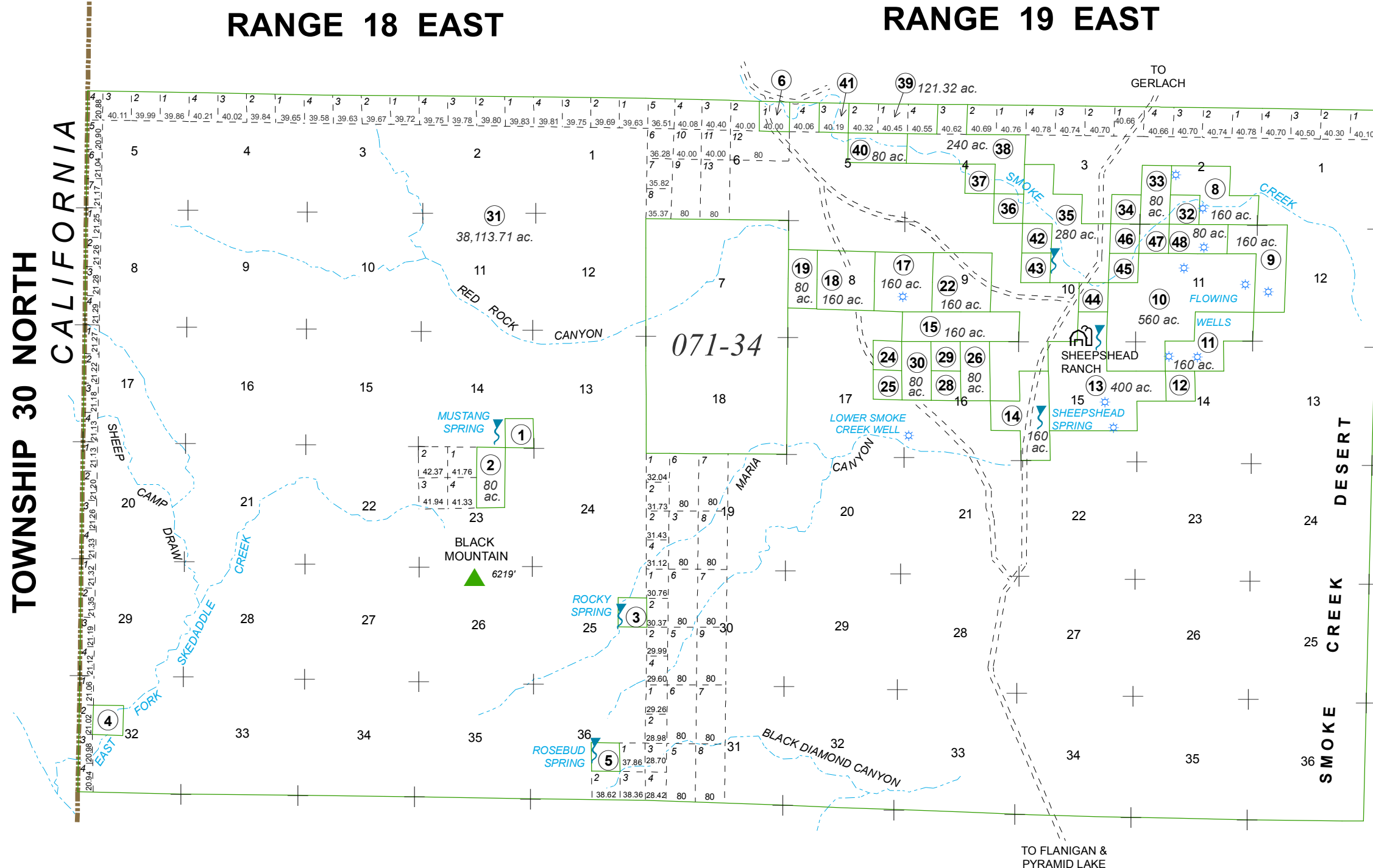
last updated: _____

area previously shown on map(s)

NOTE: This map was prepared for the use of the Washoe County Assessor for assessment and illustrative purposes only. It does not represent a survey of the premises. No liability is assumed as to the sufficiency or accuracy of the data delineated hereon.

Parcel Number	Patent Number	Acres	Parcel Number	Patent Number	Acres
071-040-32	SP 7345	40	071-040-41	SP 7430	40.19
071-040-33	SP 2593	80	071-040-42	SP 4333	40
071-040-34	SP 2573	40	071-040-43	SP 8377	40
071-040-35	SP 2573	280	071-040-44	SP 4332	40
071-040-36	SP 7641	40	071-040-45	SP 4333	40
071-040-37	SP 7641	40	071-040-46	SP 8381	40
071-040-38	SP 2503	240	071-040-47	SP 8378	40
071-040-39	FP 970836	121.32	071-040-48	SP 7346	80
071-040-40	SP 7430	80			

SP = State (Nevada) Land Patent
 FP = Federal Land Patent



NOTE: 1/16th section parcels are 40 acres, unless otherwise noted.

TOWNSHIP 30 NORTH
 CALIFORNIA

RANGE 18 EAST

RANGE 19 EAST

071-34

TO FLANIGAN &
 PYRAMID LAKE

TO
 GERLACH

DESERT
 CREEK
 SMOKE