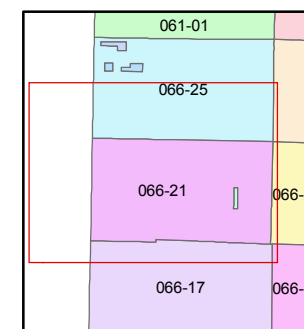
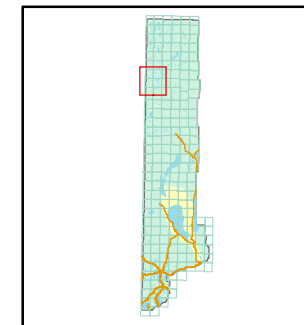


1 inch = 5,280 feet



created by: TWT 2/28/2010

last updated: CFB 11/23/2010

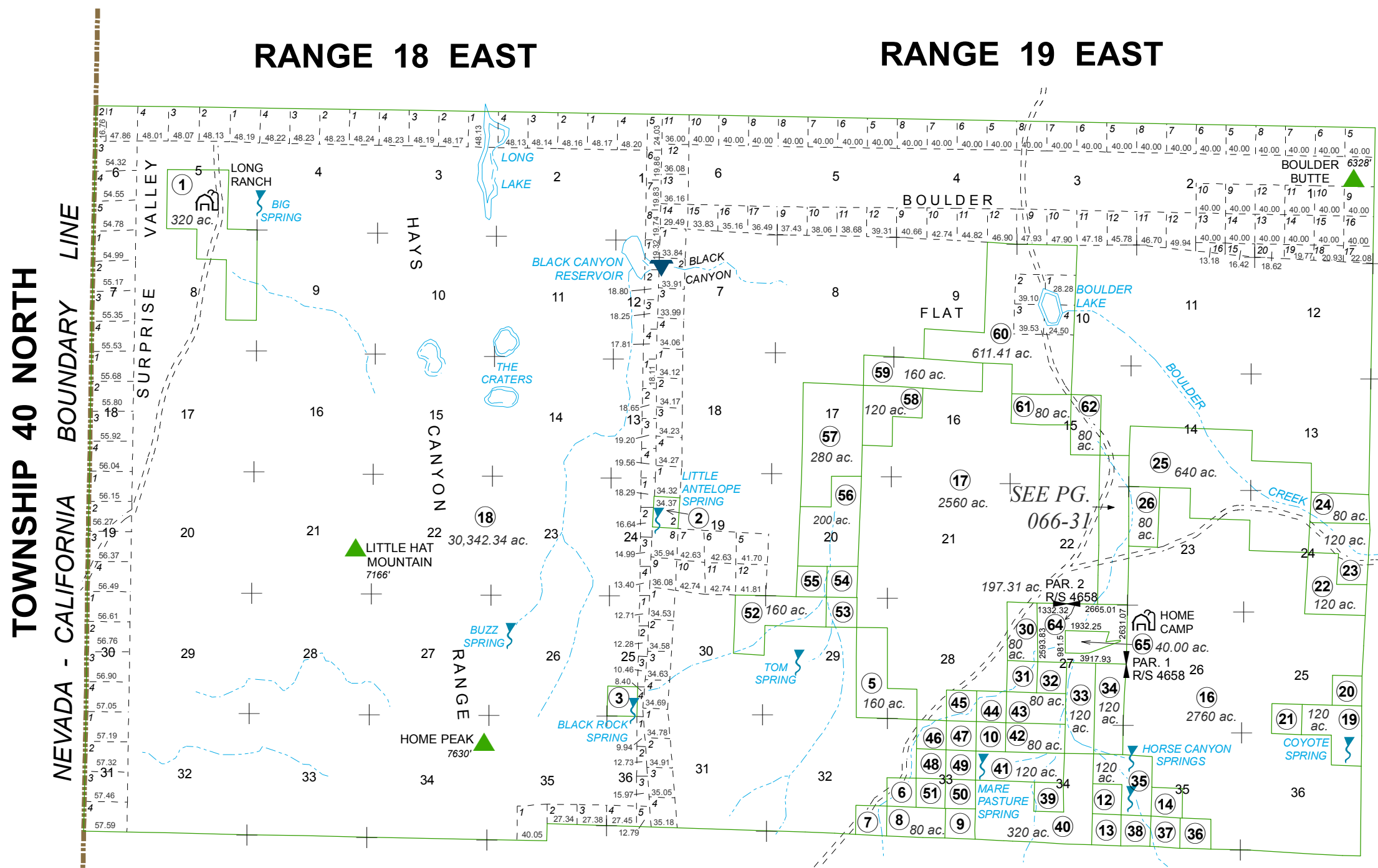
area previously shown on map(s)

NOTE: This map was prepared for the use of the Washoe County Assessor for assessment and illustrative purposes only. It does not represent a survey of the premises. No liability is assumed as to the sufficiency or accuracy of the data delineated hereon.

RANGE 18 EAST

RANGE 19 EAST

APN	STATE OR FEDERAL	PATENT NO.	ACRES
066-210-19	State	4222	120
066-210-20	State	8183	40
066-210-21	State	8183	40
066-210-22	State	8520	120
066-210-23	State	8185	120
066-210-24	State	8520	80
066-210-25	State	8519	640
066-210-26	State	4206	80
066-210-27	State	4205	200
066-210-28	State	3422	80
066-210-29	State	4206	160
066-210-30	State	8521	80
066-210-31	State	4205	40
066-210-32	State	8189	40
066-210-33	State	2292	120
066-210-34	State	4228	120
066-210-35	State	8185	120
066-210-36	State	8521	40
066-210-37	State	4222	40
066-210-38	State	4206	40
066-210-39	State	4235	40
066-210-40	State	4228	320
066-210-41	State	8189	120
066-210-42	State	4228	80
066-210-43	State	8521	80
066-210-44	State	4206	40
066-210-45	State	8521	40
066-210-46	State	8189	40
066-210-47	State	8183	40
066-210-48	State	8183	40
066-210-49	State	8521	40
066-210-50	State	8183	40
066-210-51	State	8173	40
066-210-52	State	8521	160
066-210-53	State	8189	40
066-210-54	State	8173	40
066-210-55	State	3422	40
066-210-56	State	8520	200
066-210-57	State	8517	280
066-210-58	State	4222	120
066-210-59	State	8520	160
066-210-60	State	8518	611.11
066-210-61	State	8183	80
066-210-62	State	4205	80



NOTE: All unmarked 1/4 1/4 sec. parcels are 40 ac.