

RANGE 20 EAST

RANGE 21 EAST

Assessor's Map Number

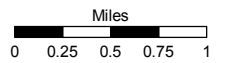
066-18

STATE OF NEVADA

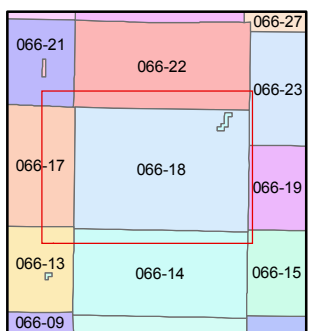
WASHOE COUNTY  
ASSESSOR'S OFFICE

Joshua G. Wilson, Assessor

1001 East Ninth Street  
Building D  
Reno, Nevada 89512  
(775) 328-2231



1 inch = 5,280 feet



created by: CFB 06/03/2009

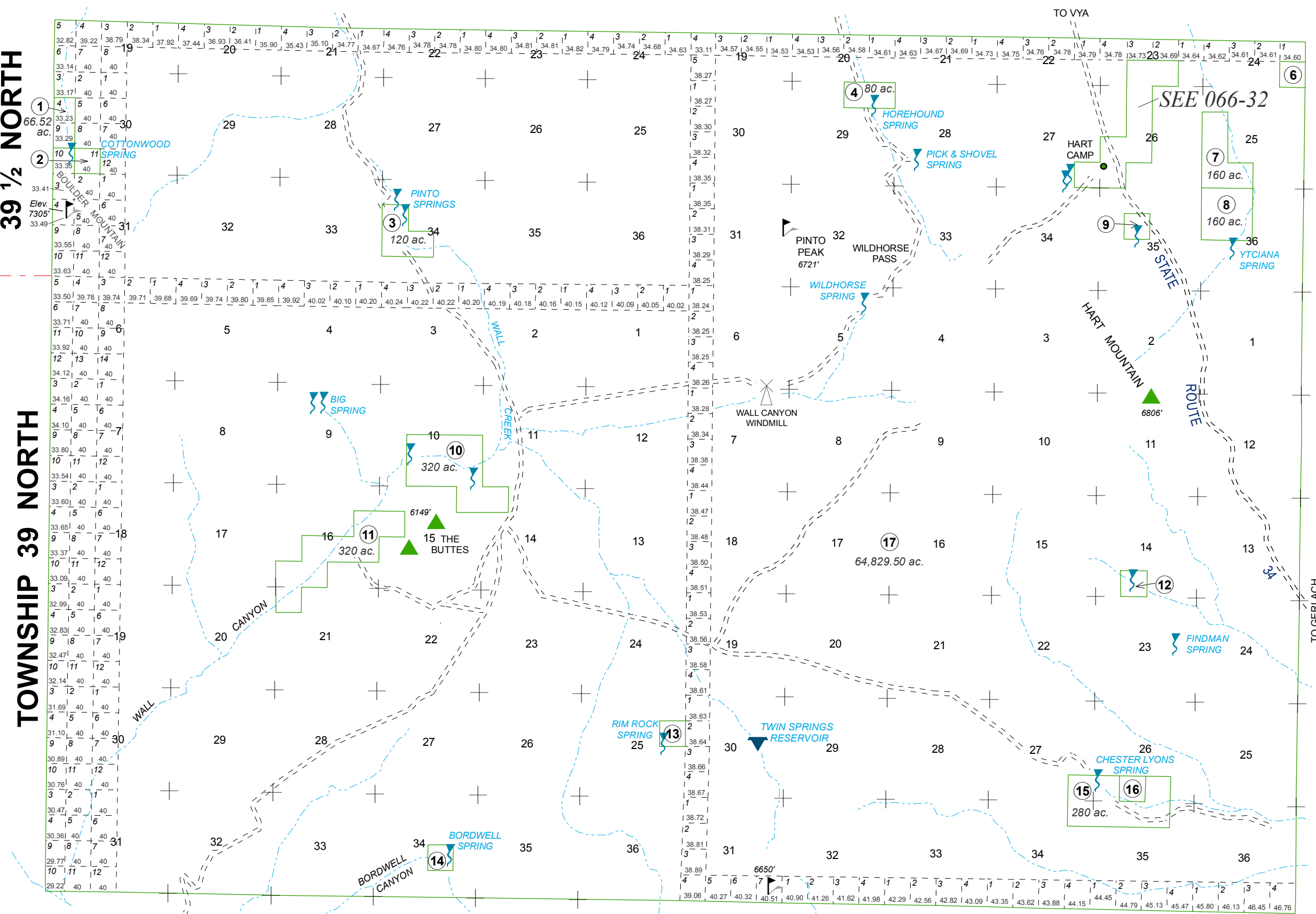
last updated: CFB 11/23/2010

area previously shown on map(s)

NOTE: This map was prepared for the use of the Washoe County Assessor for assessment and illustrative purposes only. It does not represent a survey of the premises. No liability is assumed as to the sufficiency or accuracy of the data delineated hereon.

TOWNSHIP  
39 1/2 NORTH

TOWNSHIP 39 NORTH



NOTE : All unmarked 1/4 1/4 sec. parcels are 40 ac.