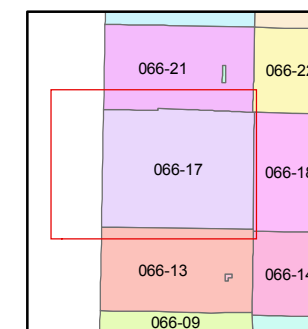
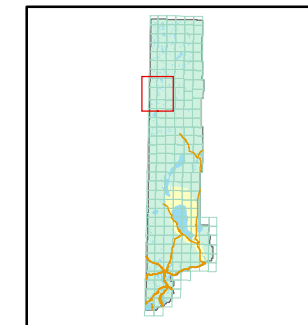


1 inch = 5,280 feet



created by: TWT 2/10/2010

last updated: CFB 11/23/2010

area previously shown on map(s)

NOTE: This map was prepared for the use of the Washoe County Assessor for assessment and illustrative purposes only. It does not represent a survey of the premises. No liability is assumed as to the sufficiency or accuracy of the data delineated hereon.

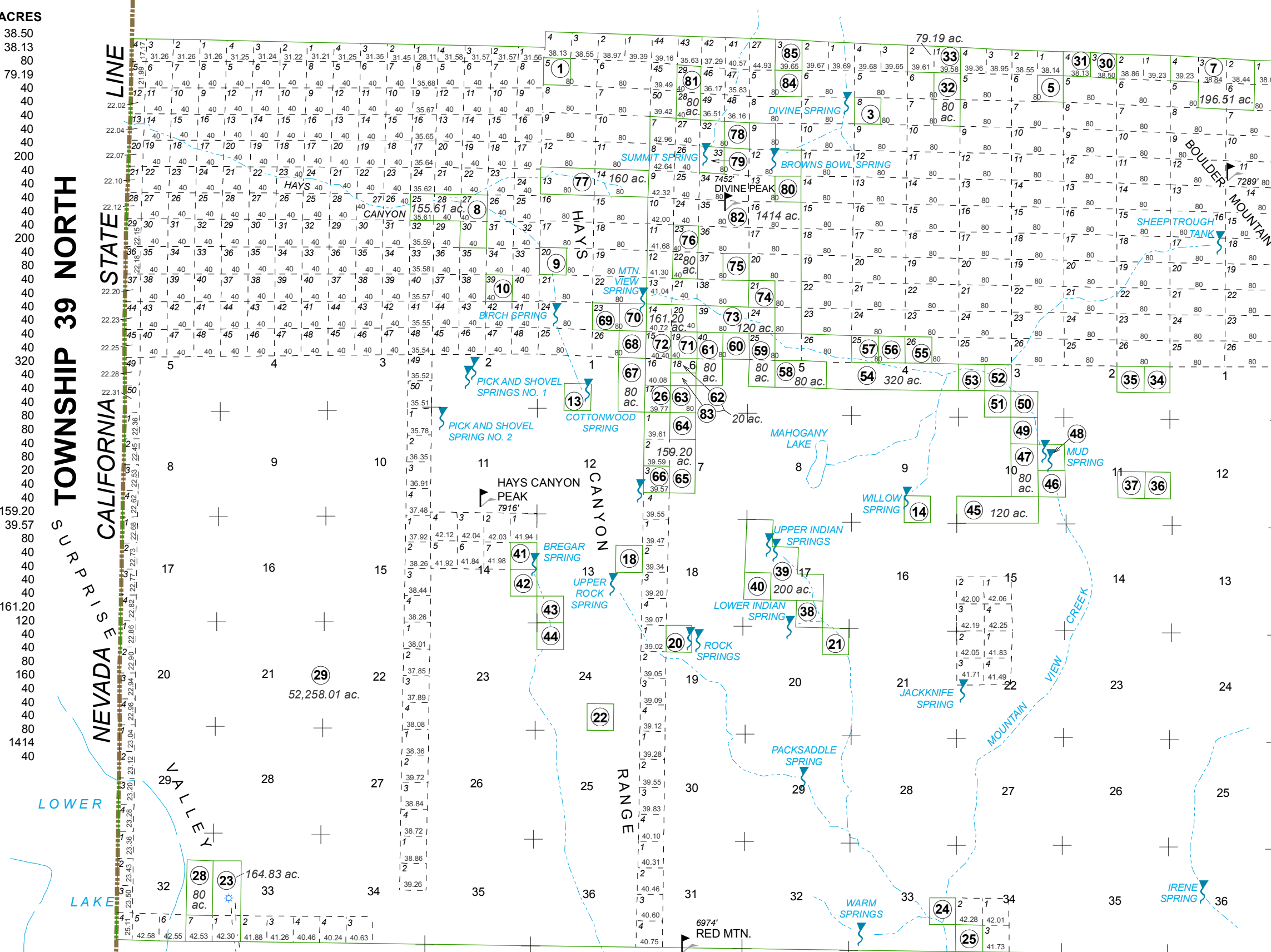
RANGE 18 EAST

RANGE 19 EAST

TOWNSHIP 39 NORTH

STATE LINE CALIFORNIA NEVADA

APN	STATE OR FEDERAL	PATENT NO.	ACRES
066-170-30	State	8184	38.50
066-170-31	State	8190	38.13
066-170-32	State	8184	80
066-170-33	State	4224	79.19
066-170-34	State	8175	40
066-170-35	State	8183	40
066-170-36	State	8175	40
066-170-37	State	8183	40
066-170-38	State	8173	40
066-170-39	State	8174	200
066-170-40	State	4225	40
066-170-41	State	8175	40
066-170-42	Federal	578813	40
066-170-43	State	4225	40
066-170-44	Federal	578813	40
066-170-45	State	4213	200
066-170-46	State	8169	40
066-170-47	State	8175	80
066-170-48	State	8168	40
066-170-49	State	8167	40
066-170-50	State	8170	40
066-170-51	State	8172	40
066-170-52	State	8171	40
066-170-53	State	8178	40
066-170-54	State	4214	320
066-170-55	State	8180	40
066-170-56	State	8179	40
066-170-57	State	8180	40
066-170-58	State	8183	80
066-170-59	State	8181	80
066-170-60	State	8183	40
066-170-61	State	8181	80
066-170-62	State	8176	20
066-170-63	State	8180	40
066-170-64	State	4225	40
066-170-65	State	8181	159.20
066-170-66	State	8176	39.57
066-170-67	State	8188	80
066-170-68	State	8186	40
066-170-69	State	4228	40
066-170-70	State	8183	40
066-170-71	State	8177	40
066-170-72	State	8181	161.20
066-170-73	State	4215	120
066-170-74	State	8187	40
066-170-75	State	8187	40
066-170-76	State	8187	80
066-170-77	State	4232	160
066-170-78	Federal	627939	40
066-170-79	Federal	578813	40
066-170-80	Federal	478834	40
066-170-81	State	4224	80
066-170-82	Federal	1181594	1414
066-170-84	State	4224	40



NOTE: All unmarked 1/4 1/4 sec. parcels are 40 ac.