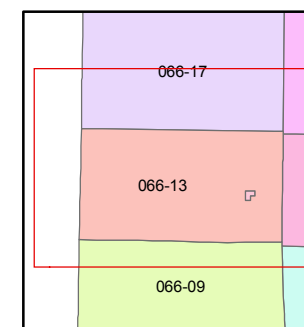
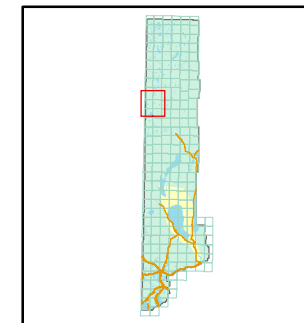


1 inch = 5,280 feet

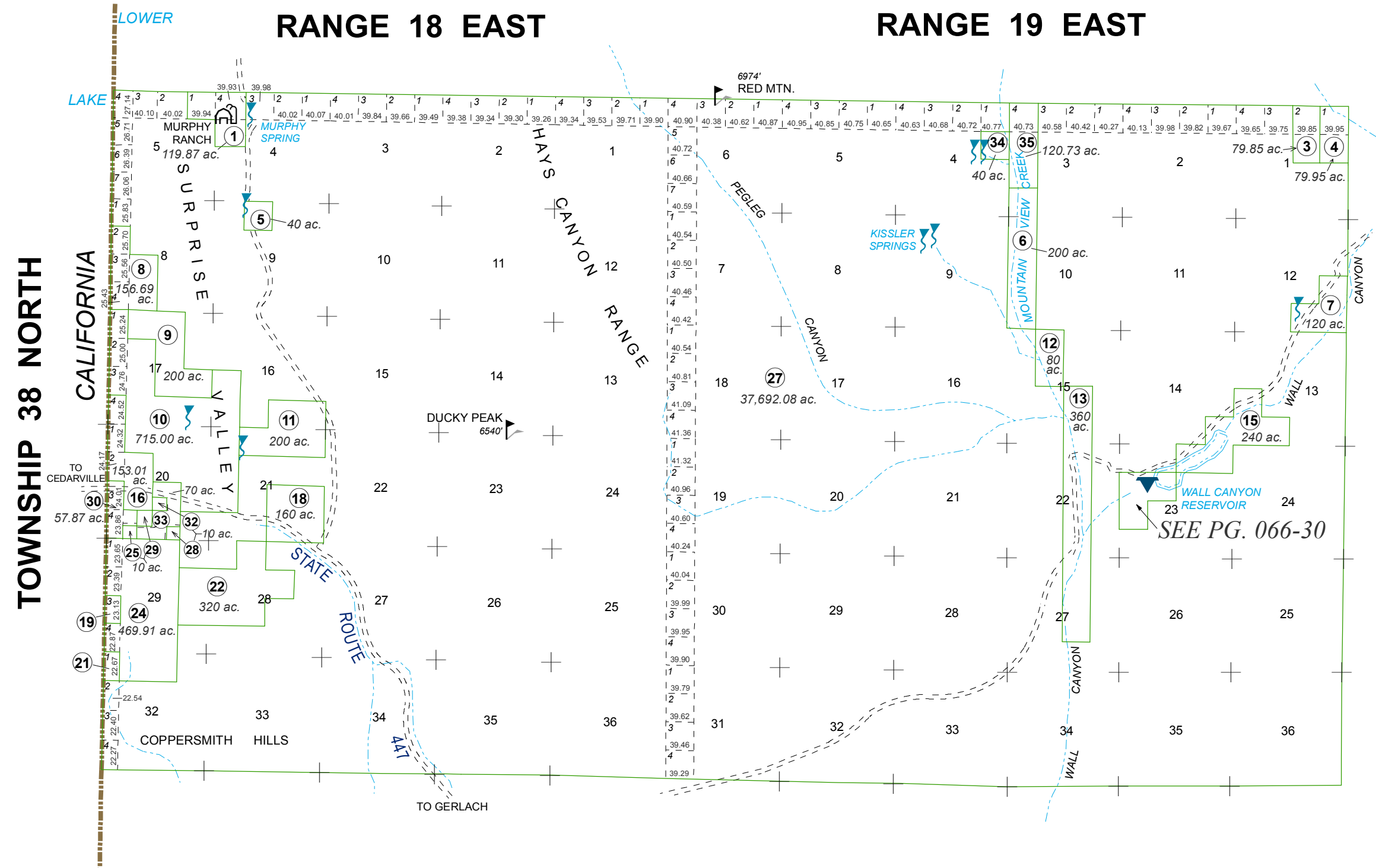


created by: TWT 2/18/2010

last updated: CFB 11/23/2010

area previously shown on map(s)

NOTE: This map was prepared for the use of the Washoe County Assessor for assessment and illustrative purposes only. It does not represent a survey of the premises. No liability is assumed as to the sufficiency or accuracy of the data delineated hereon.



SEE PG. 066-30

**TOWNSHIP 38 NORTH**

**CALIFORNIA**

**RANGE 18 EAST**

**RANGE 19 EAST**

LOWER LAKE

MURPHY RANCH  
SURPRISE VALLEY

HAYS CANYON RANGE

6974' RED MTN.

PEGLEG CANYON

KISSLER SPRINGS

MOUNTAIN VIEW CREEK

WALL CANYON

WALL CANYON RESERVOIR

TO CEDARVILLE

19

21

COPPERSMITH HILLS

TO GERLACH