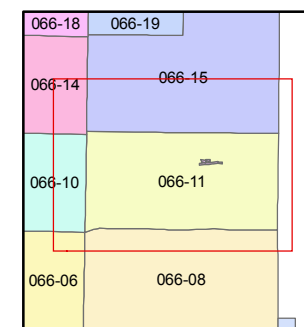
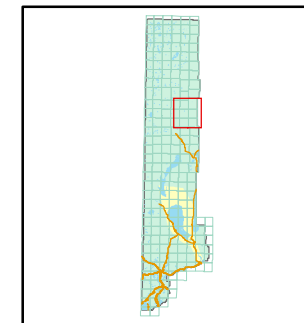


1 inch = 5,280 feet



created by: TWT 2/23/2010

last updated: CFB 11/23/2010

area previously shown on map(s)

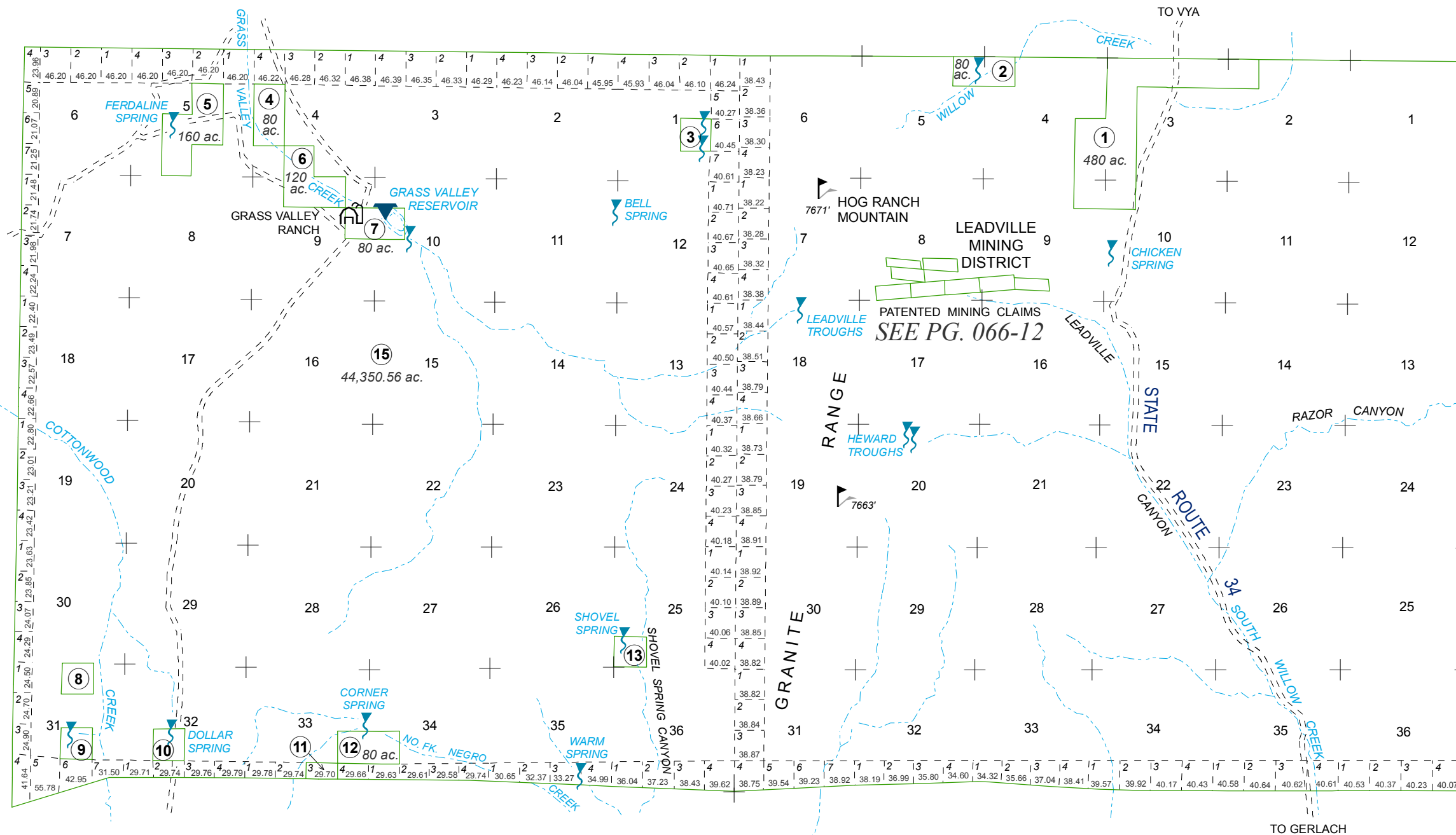
NOTE: This map was prepared for the use of the Washoe County Assessor for assessment and illustrative purposes only. It does not represent a survey of the premises. No liability is assumed as to the sufficiency or accuracy of the data delineated hereon.

RANGE 22 EAST

RANGE 23 EAST

TOWNSHIP 37 NORTH

WASHOE - HUMBOLDT BOUNDARY



NOTE : All unmarked 1/4 1/4 sec. parcels are 40 ac.