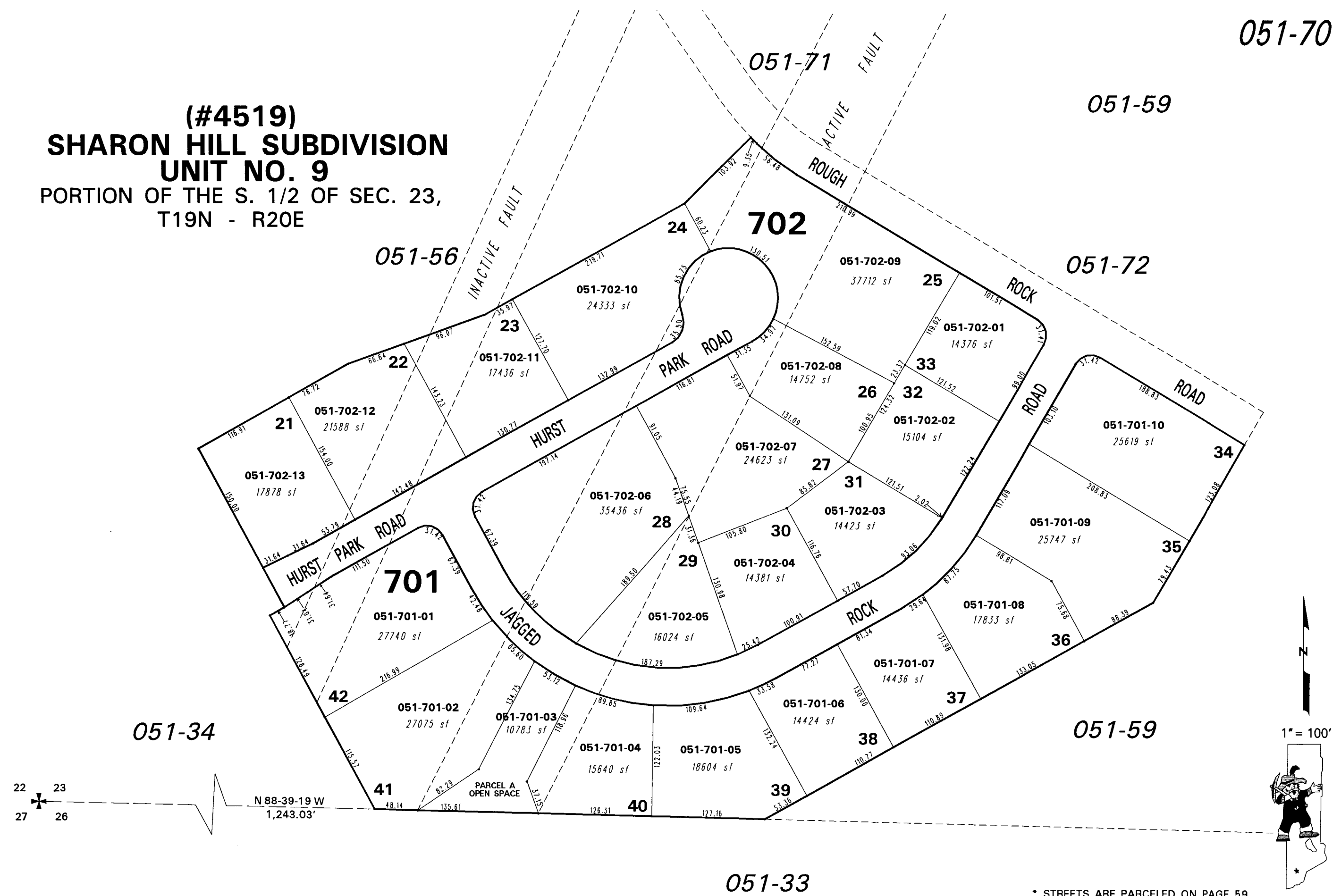
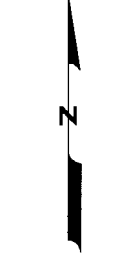


**(#4519)
SHARON HILL SUBDIVISION
UNIT NO. 9**
PORTION OF THE S. 1/2 OF SEC. 23,
T19N - R20E



22 23
27 26

N 88-39-19 W
1,243.03'



1" = 100'



* STREETS ARE PARCELED ON PAGE 59.

NOTE: This map is prepared for the use of the Washoe County Assessor for assessment and illustrative purposes only. It does not represent a survey of the premises. No liability is assumed as to the sufficiency or the accuracy of the data delineated hereon.

Office of Washoe County Assessor, Nevada - Robert W. McGowan

This area previously shown on 051-59

Drawn by	PK 08/16/05
Revised	PK 2/28/06

NOTE: Areas of parcels which are less than 2 acres are shown in square feet.