

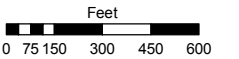
050-01

Assessor's Map Number

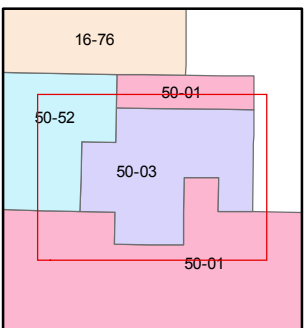
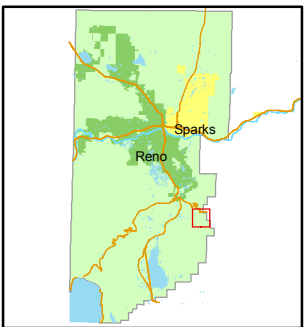
**050-03**

STATE OF NEVADA  
**WASHOE COUNTY**  
**ASSESSOR'S OFFICE**  
Joshua G. Wilson, Assessor

1001 East Ninth Street  
Building D  
Reno, Nevada 89512  
(775) 328-2231



1 inch = 600 feet



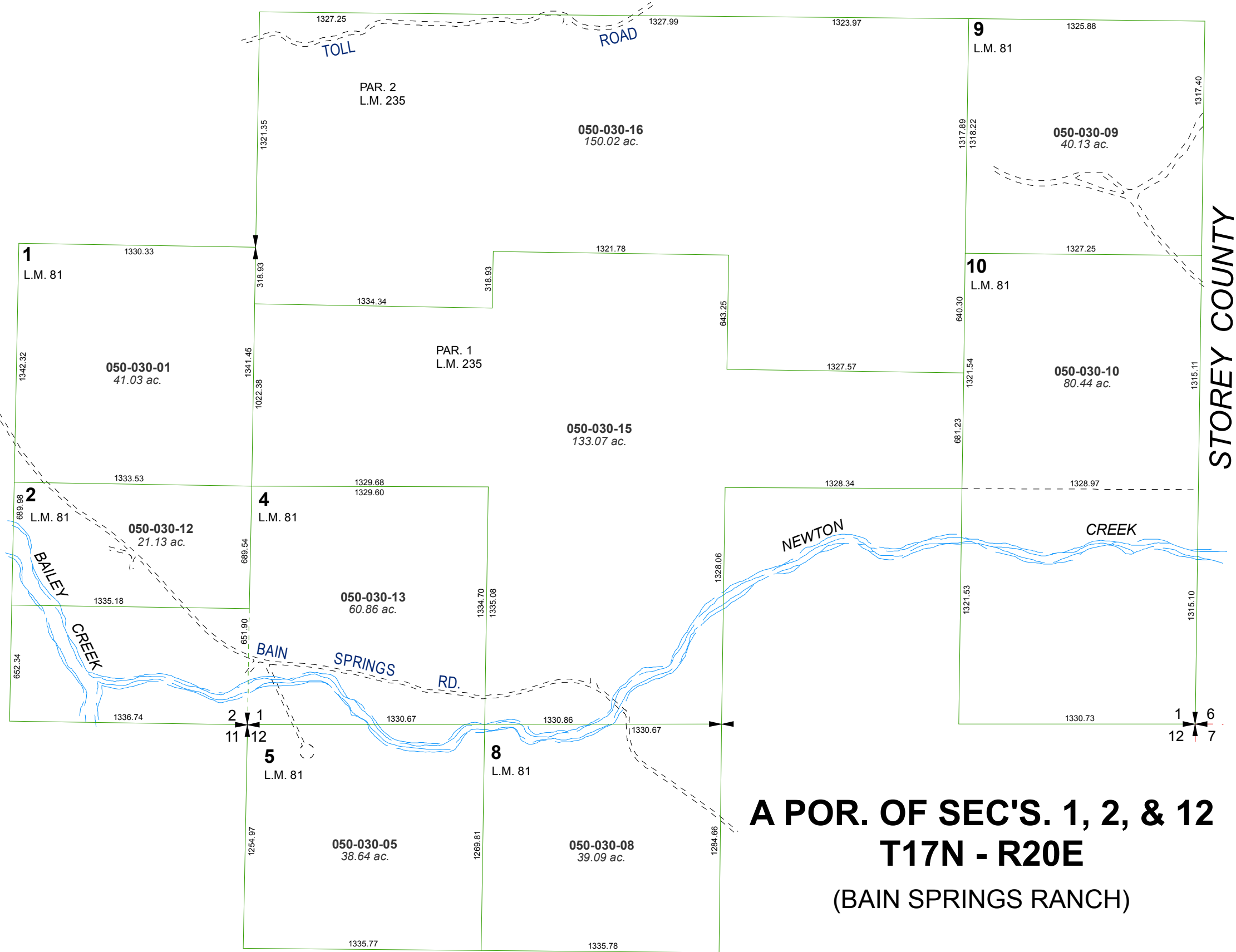
created by: NLH 6/23/2009

last updated: \_\_\_\_\_

area previously shown on map(s)  
\_\_\_\_\_

NOTE: This map was prepared for the use of the Washoe County Assessor for assessment and illustrative purposes only. It does not represent a survey of the premises. No liability is assumed as to the sufficiency or accuracy of the data delineated hereon.

050-52



STOREY COUNTY

**A POR. OF SEC'S. 1, 2, & 12**  
**T17N - R20E**  
**(BAIN SPRINGS RANCH)**

050-01