

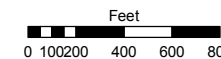
SECTION 19 & PORTIONS OF SECTIONS 20 & 29, T17N - R19E

Assessor's Map Number

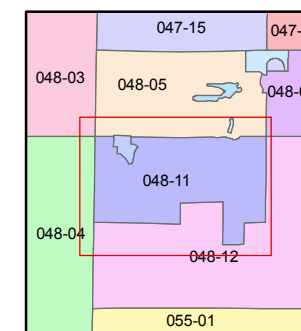
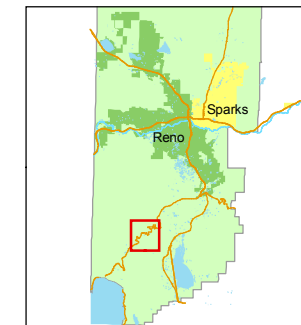
048-11

STATE OF NEVADA
WASHOE COUNTY
ASSESSOR'S OFFICE
 Joshua G. Wilson, Assessor

1001 East Ninth Street
 Building D
 Reno, Nevada 89512
 (775) 328-2231



1 inch = 800 feet



created by: KSB 2/02/2010

last updated: KSB 2/16/10, CFB 4/01/10

area previously shown on map(s)

045-52

NOTE: This map was prepared for the use of the Washoe County Assessor for assessment and illustrative purposes only. It does not represent a survey of the premises. No liability is assumed as to the sufficiency or accuracy of the data delineated hereon.

