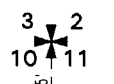


PORTION OF THE NORTHEAST 1/4 OF SECTION 10 047-02 T17N - R19E

WINTERBERRY CT.

GOLDEN CURRANT
CIRCLE



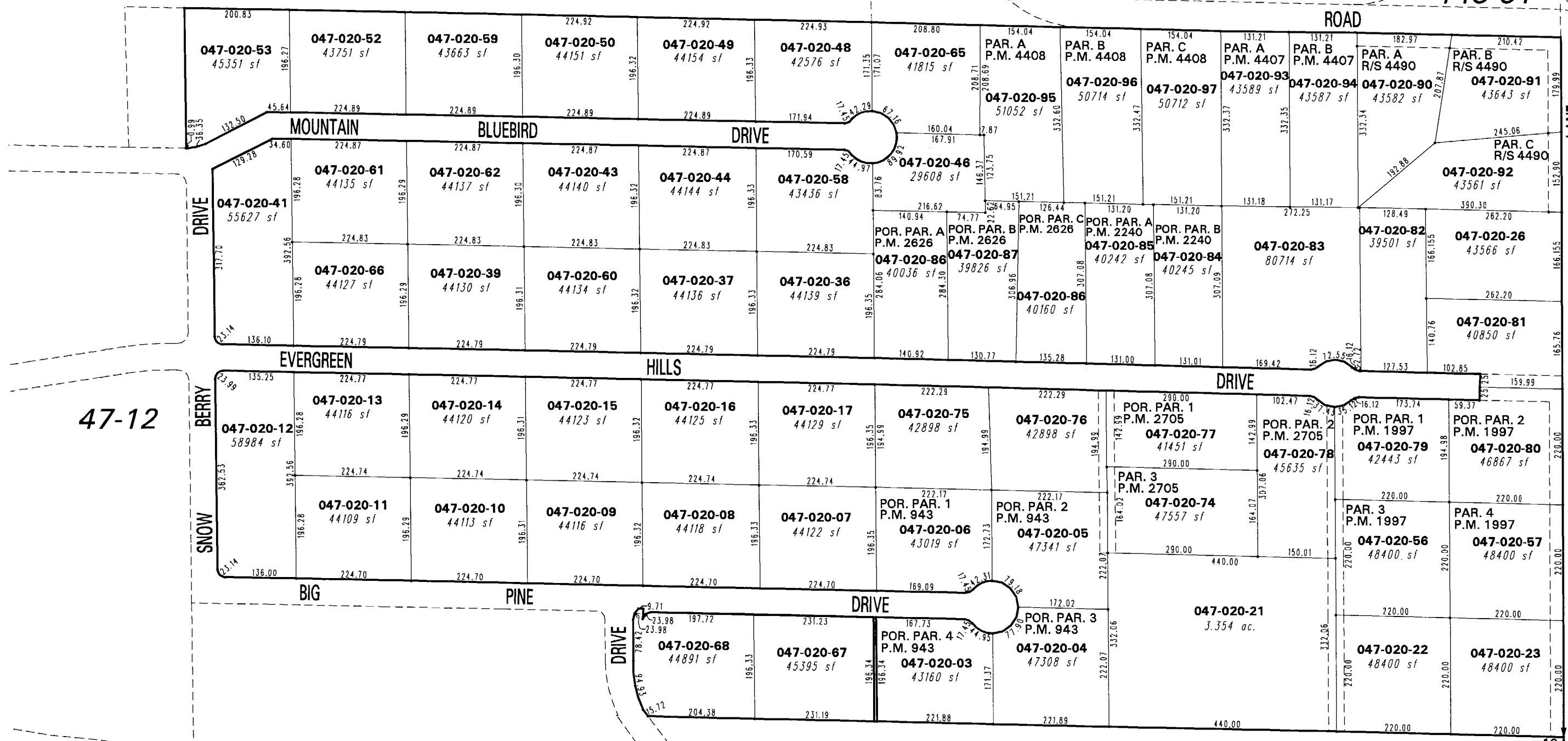
47-11

148-22

148-31

148-23

148-32



47-12

47-03

JOY LAKE ROAD
47-09

NOTE: This map is prepared for the use of the Washoe County Assessor for assessment and illustrative purposes only. It does not represent a survey of the premises. No liability is assumed as to the sufficiency or the accuracy of the data delineated hereon.

Office of Washoe County Assessor, Nevada - Robert W. McGowan

This area previously shown on _____

NOTE: Areas of parcels which are less than 2 acres are shown in square feet.

Drawn by TWT 01/05/05
Revised TWT 7/25/05, 5/22/06