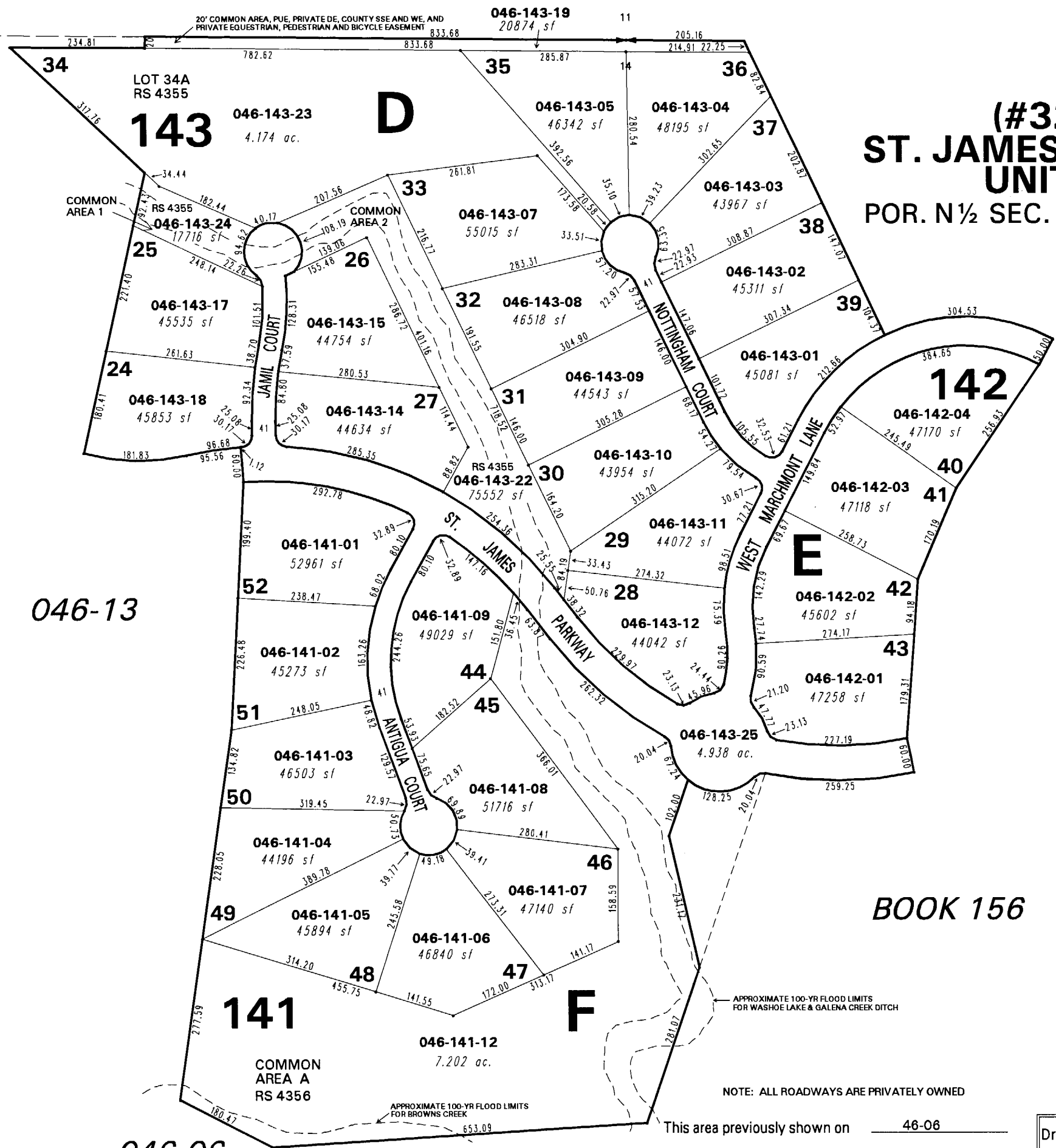


10 11
15 14

N89° 31' 09"W
1803.98

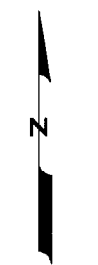


(#3261)
**ST. JAMES'S VILLAGE
 UNIT 1C**
 POR. N½ SEC. 14, T17N - R19E

BOOK 156

046-13

BOOK 156



1" = 200'



NOTE: This map is prepared for the use of the Washoe County Assessor for assessment and illustrative purposes only. It does not represent a survey of the premises. No liability is assumed as to the sufficiency or the accuracy of the data delineated hereon.

046-06
 Office of Washoe County Assessor, Nevada - Robert W. McGowan

NOTE: ALL ROADWAYS ARE PRIVATELY OWNED

This area previously shown on 46-06

NOTE: Areas of parcels which are less than 2 acres are shown in square feet.

Drawn by GZ 7/29/96
 Revised 2/97 7/18/97 T.J.F. HCS 4/2/02
 KSB 10/28/02 PK 4/14/04* PK 8/16/04