

044-29

162-25

162-24

044-38

044-38

044-37

163-12  
SO. VIRGINIA ST.

044-30

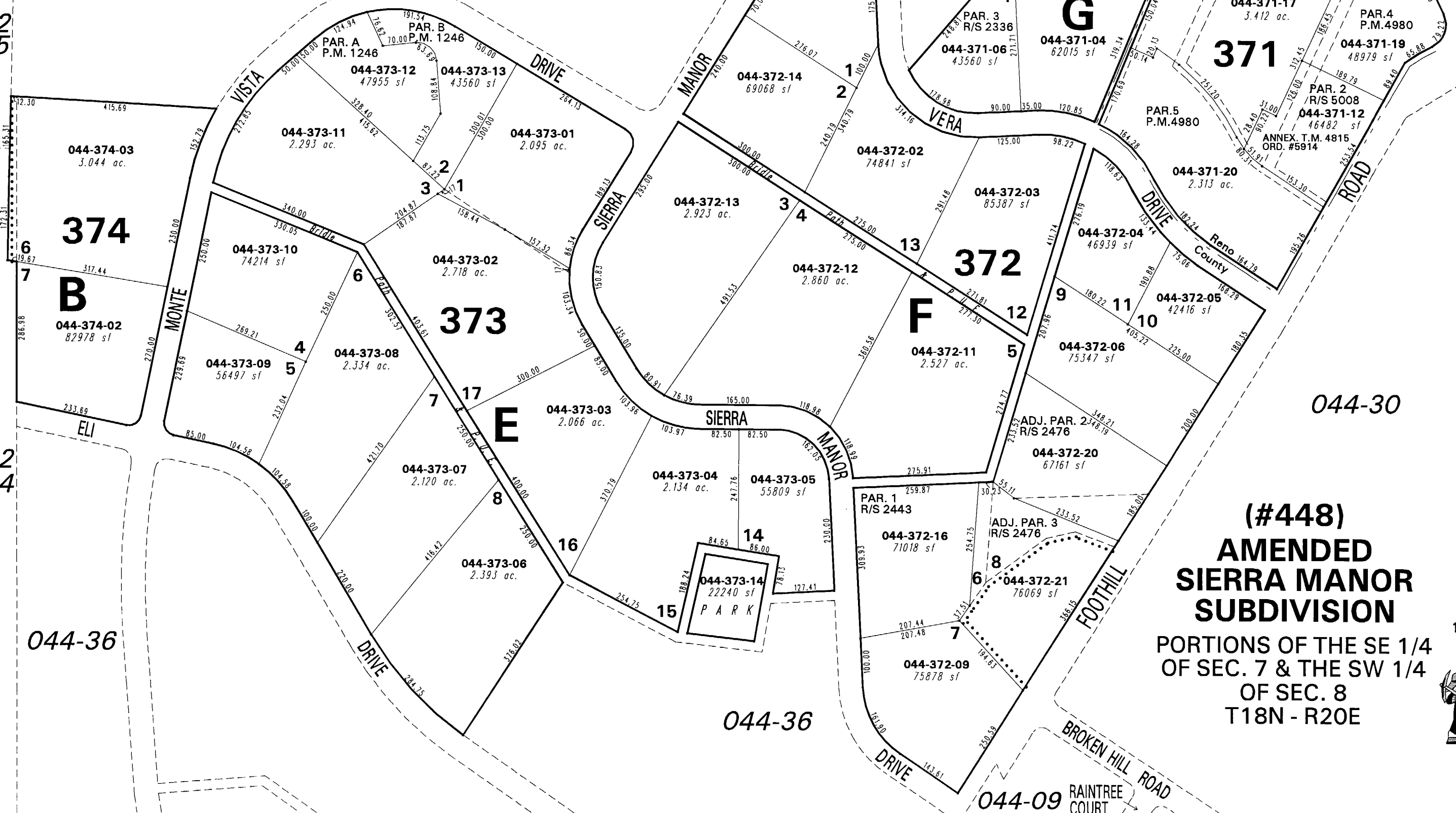
044-36

044-36

044-09 RAIN TREE COURT

**(#448)  
AMENDED  
SIERRA MANOR  
SUBDIVISION**  
PORTIONS OF THE SE 1/4  
OF SEC. 7 & THE SW 1/4  
OF SEC. 8  
T18N - R20E

1" = 200'



NOTE: This map is prepared for the use of the Washoe County Assessor for assessment and illustrative purposes only. It does not represent a survey of the premises. No liability is assumed as to the sufficiency or the accuracy of the data delineated hereon.

Office of Washoe County Assessor, Nevada - Joshua G. Wilson

This area previously shown on \_\_\_\_\_  
NOTE: Areas of parcels which are less than 2 acres are shown in square feet.

Drawn by	TWT	09/28/07
Revised	TWT	3/11/08 CFB 1/16/2009
	CFB	4/17/2009