

043-32-S4

043-03

043-32-S1

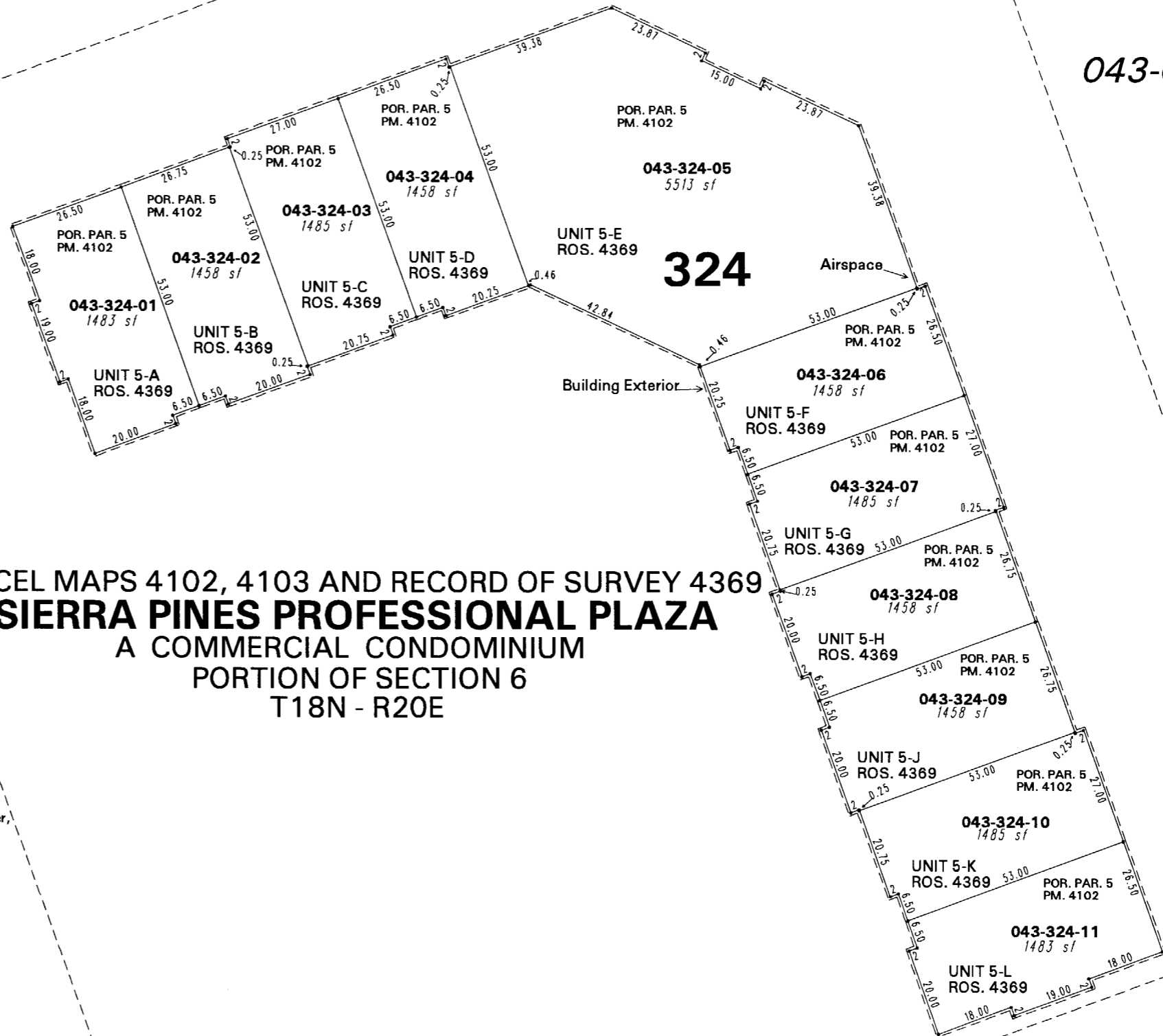
043-32-S3

HUFFAKER LANE

WEST

PARCEL MAPS 4102, 4103 AND RECORD OF SURVEY 4369
SIERRA PINES PROFESSIONAL PLAZA
 A COMMERCIAL CONDOMINIUM
 PORTION OF SECTION 6
 T18N - R20E

30' Sanitary Sewer, Access & PUE



1" = 30'



NOTE: This map is prepared for the use of the Washoe County Assessor for assessment and illustrative purposes only. It does not represent a survey of the premises. No liability is assumed as to the sufficiency or the accuracy of the data delineated hereon.

Office of Washoe County Assessor, Nevada - Robert W. McGowan

This area previously shown on 43-03

NOTE: Areas of parcels which are less than 2 acres are shown in square feet.

Drawn by	PK 05/10/04
Revised	