

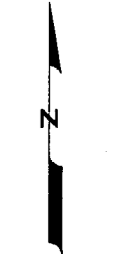
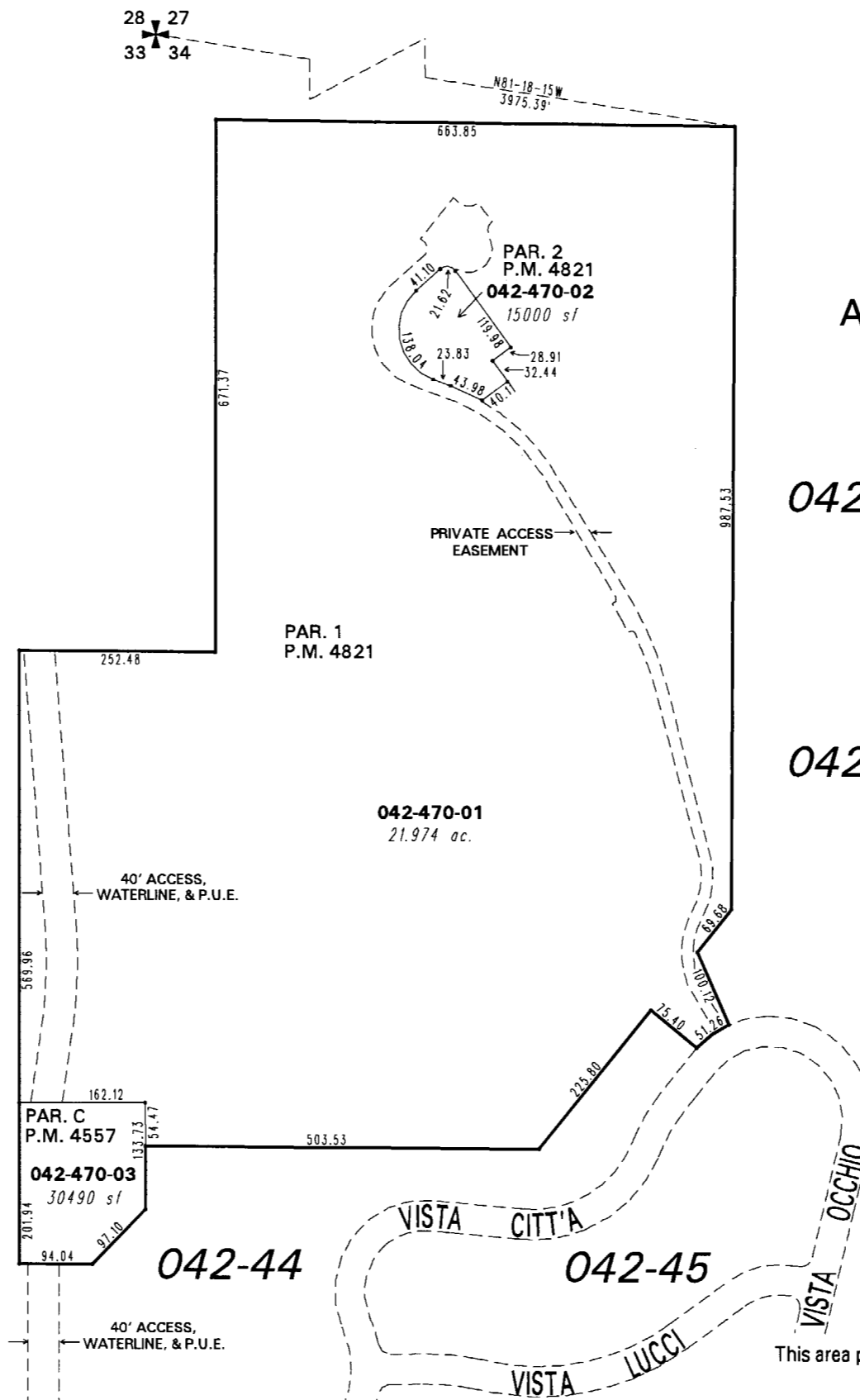
BOOK 222

BOOK 222

28 27
33 34

N81-18-15W
3975.39'

A POR. OF THE NE 1/4 OF SEC. 34,
T19N - R19E



1" = 200'



NOTE: This map is prepared for the use of the Washoe County Assessor for assessment and illustrative purposes only. It does not represent a survey of the premises. No liability is assumed as to the sufficiency or the accuracy of the data delineated hereon.

Office of Washoe County Assessor, Nevada - Joshua G. Wilson

This area previously shown on 042-01

NOTE: Areas of parcels which are less than 2 acres are shown in square feet.

Drawn by	NLH 09/05/07
Revised	