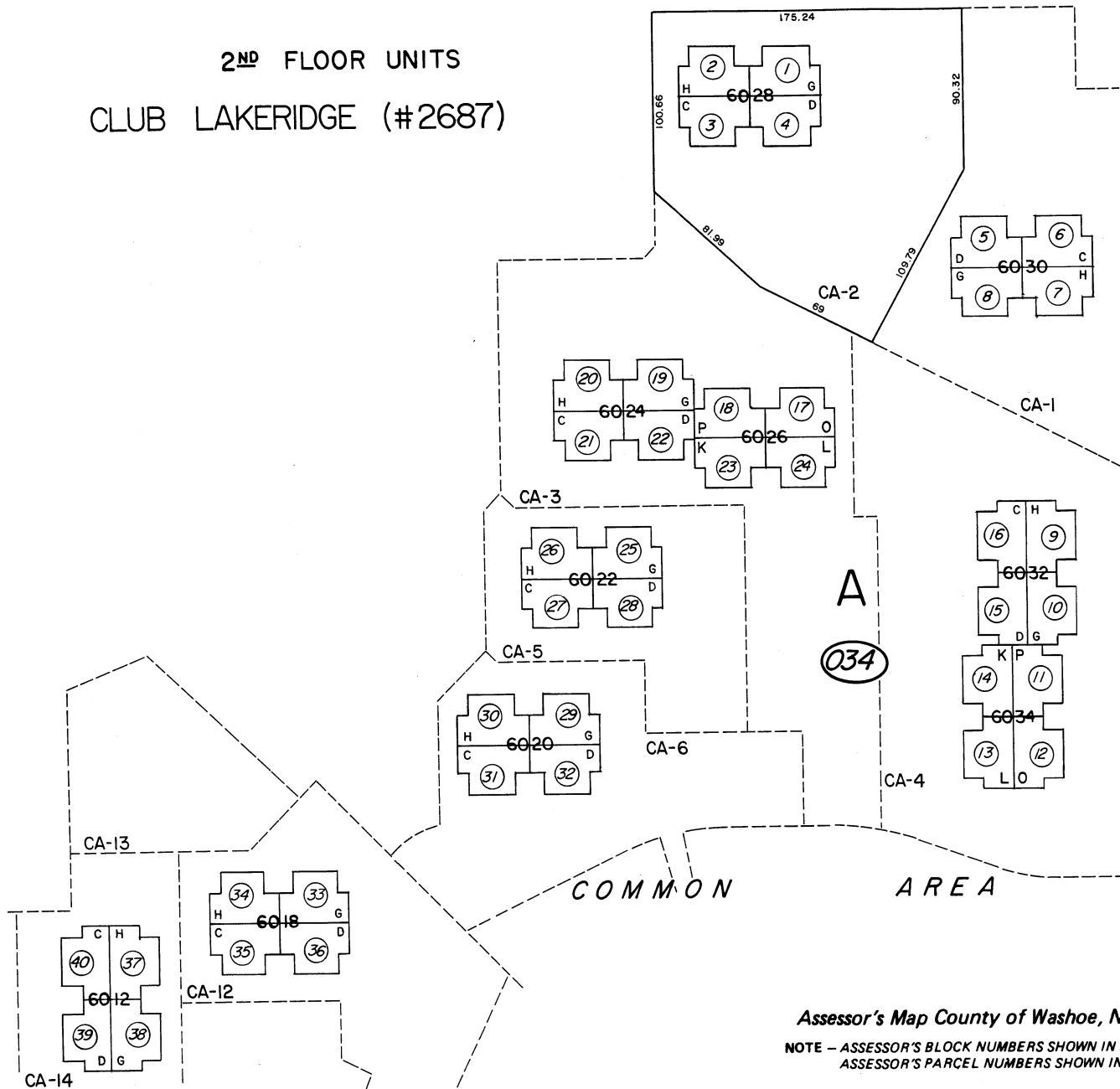


# 2<sup>ND</sup> FLOOR UNITS CLUB LAKERIDGE (#2687)



Assessor's Map County of Washoe, Nevada

NOTE - ASSESSOR'S BLOCK NUMBERS SHOWN IN ELLIPSES  
ASSESSOR'S PARCEL NUMBERS SHOWN IN CIRCLES

drawn by	M.P.	5/81
revised	8/90 10/91	
superseded		