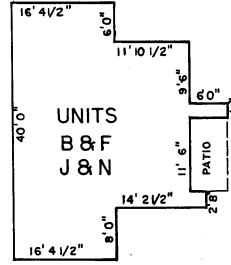
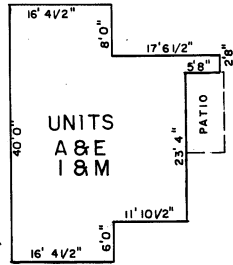


CLUB LAKERIDGE (#2687) A CONDOMINIUM

IPOR N² NE⁴ SEC. 35, T.19N-R.19E.

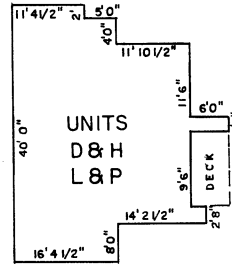
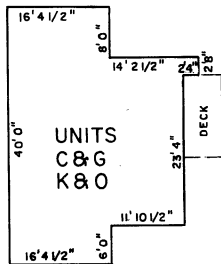
FIRST FLOOR UNITS



TYPICAL UNITS

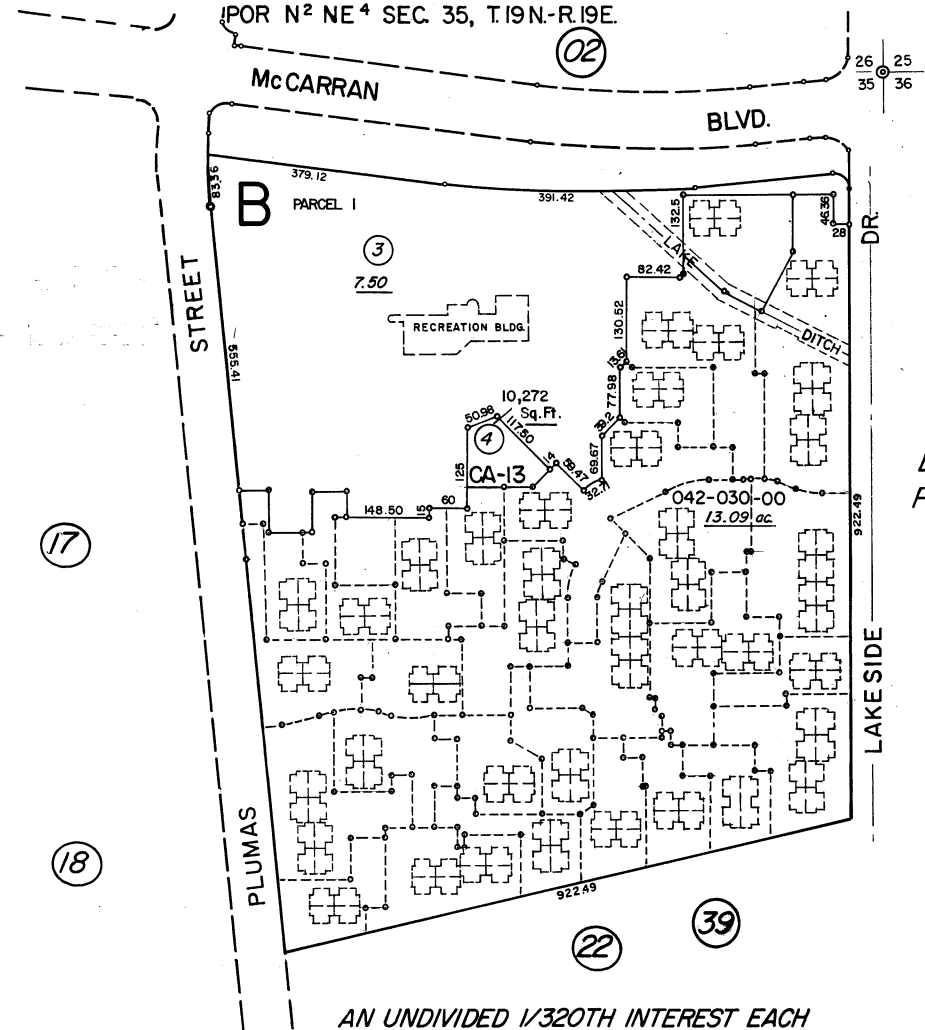
SCALE: 1" = 20'

SECOND FLOOR UNITS



NOTE: This Map is prepared for the use of the Washoe County Assessor for Assessment and illustrative purposes only, it does not represent survey of the premises. No liability is assumed as to the sufficiency or accuracy of the data delineated hereon.

NOTE: The addition of Units I thru P per Certificate of Amendment #1516195.



BK. 40
PG. 08

AN UNDIVIDED 1/320TH INTEREST EACH
IN COMMON AREA.

Assessor's Map County of Washoe, Nevada

NOTE - ASSESSOR'S BLOCK NUMBERS SHOWN IN ELLIPSES
ASSESSOR'S PARCEL NUMBERS SHOWN IN CIRCLES

drawn by	M. PORTER	5/81
revised	10/84	1/85, 2/89, 8/90
superseded	10/91/1/95	TWT/5/1/08