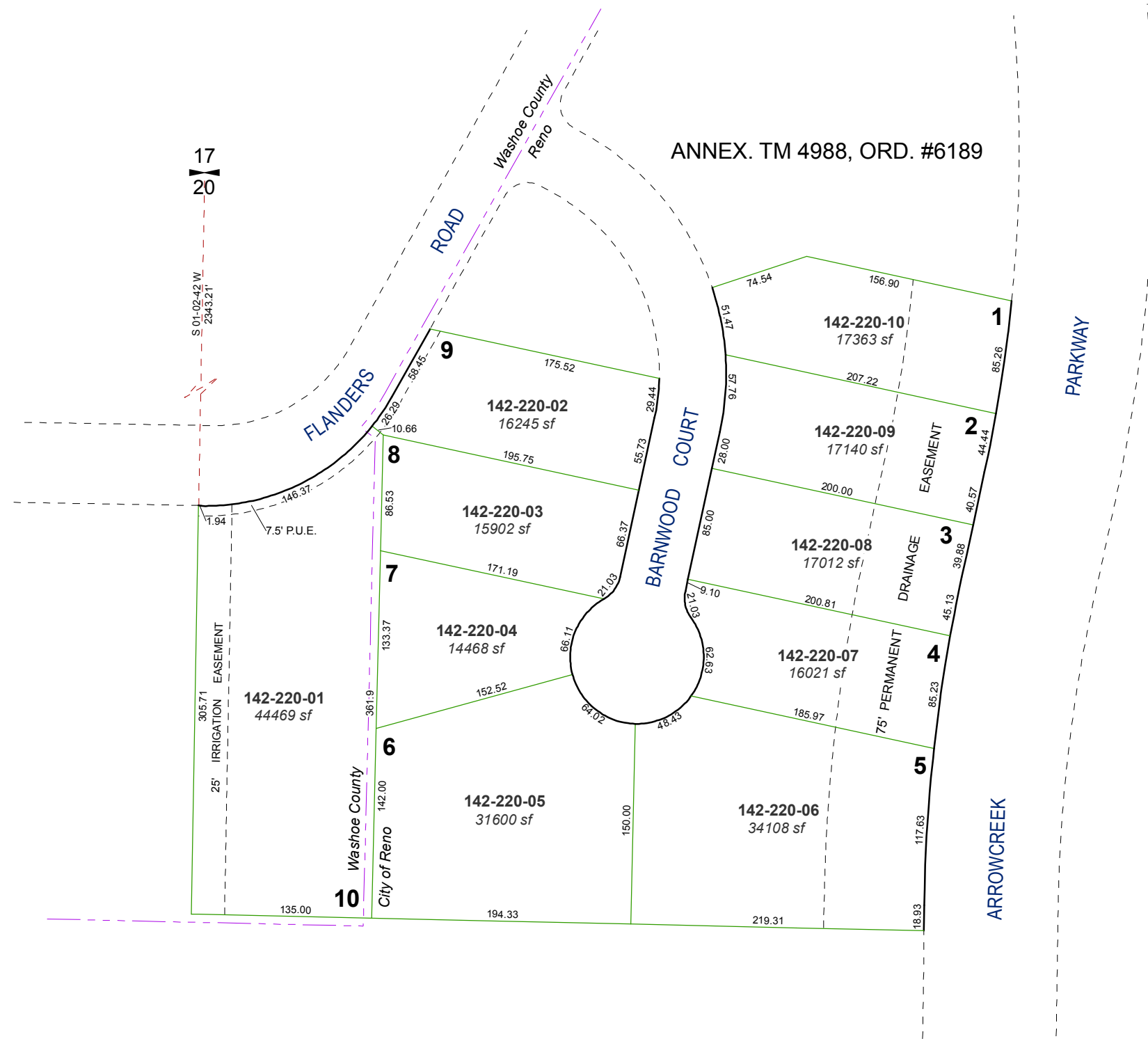


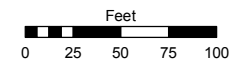
**(#4135)**  
**WEDGE MEADOWS UNIT 5**  
 A POR. OF THE W 1/2 OF THE NE 1/4 OF SEC. 20  
 T18N - R20E



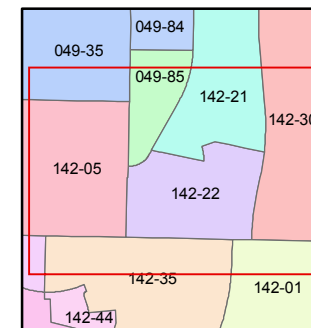
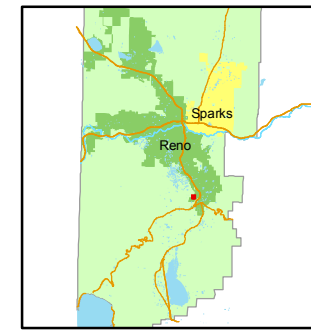
Assessor's Map Number  
**142-22**

STATE OF NEVADA  
**WASHOE COUNTY**  
**ASSESSOR'S OFFICE**  
 Joshua G. Wilson, Assessor

1001 East Ninth Street  
 Building D  
 Reno, Nevada 89512  
 (775) 328-2231



1 inch = 100 feet



created by: NLH 1/19/2011

last updated: KSB 7/21/11

area previously shown on map(s)  
049-23

NOTE: This map was prepared for the use of the Washoe County Assessor for assessment and illustrative purposes only. It does not represent a survey of the premises. No liability is assumed as to the sufficiency or accuracy of the data delineated hereon.