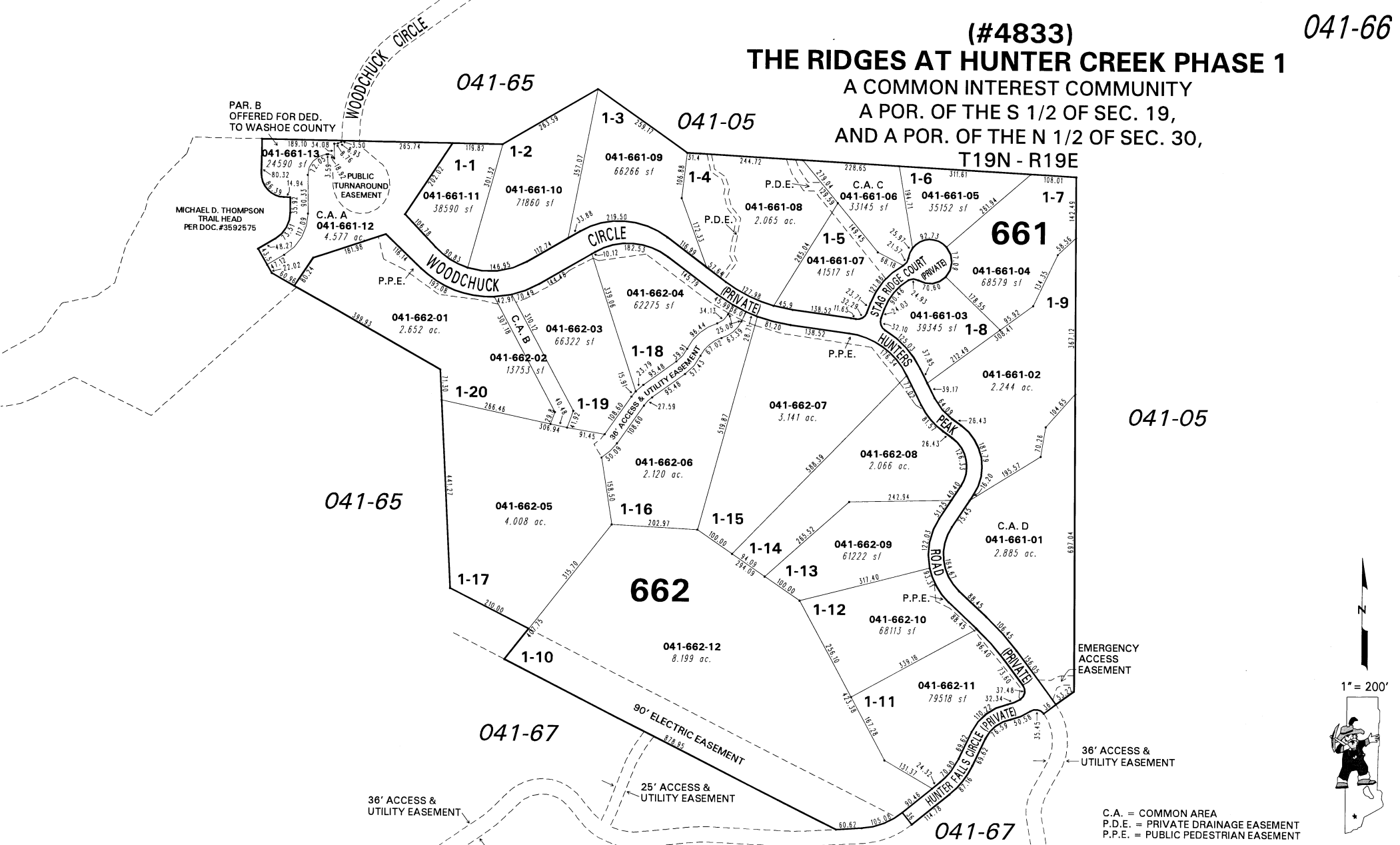


(#4833)

# THE RIDGES AT HUNTER CREEK PHASE 1

A COMMON INTEREST COMMUNITY  
A POR. OF THE S 1/2 OF SEC. 19,  
AND A POR. OF THE N 1/2 OF SEC. 30,  
T19N - R19E



041-05

041-65

041-67

EMERGENCY ACCESS EASEMENT

36' ACCESS & UTILITY EASEMENT

25' ACCESS & UTILITY EASEMENT

36' ACCESS & UTILITY EASEMENT

C.A. = COMMON AREA  
P.D.E. = PRIVATE DRAINAGE EASEMENT  
P.P.E. = PUBLIC PEDESTRIAN EASEMENT



1" = 200'



NOTE: This map is prepared for the use of the Washoe County Assessor for assessment and illustrative purposes only. It does not represent a survey of the premises. No liability is assumed as to the sufficiency or the accuracy of the data delineated hereon.

Office of Washoe County Assessor, Nevada - Joshua G. Wilson

This area previously shown on 041-65

NOTE: Areas of parcels which are less than 2 acres are shown in square feet.

Drawn by NLH 11/26/07  
Revised NLH 4/22/08