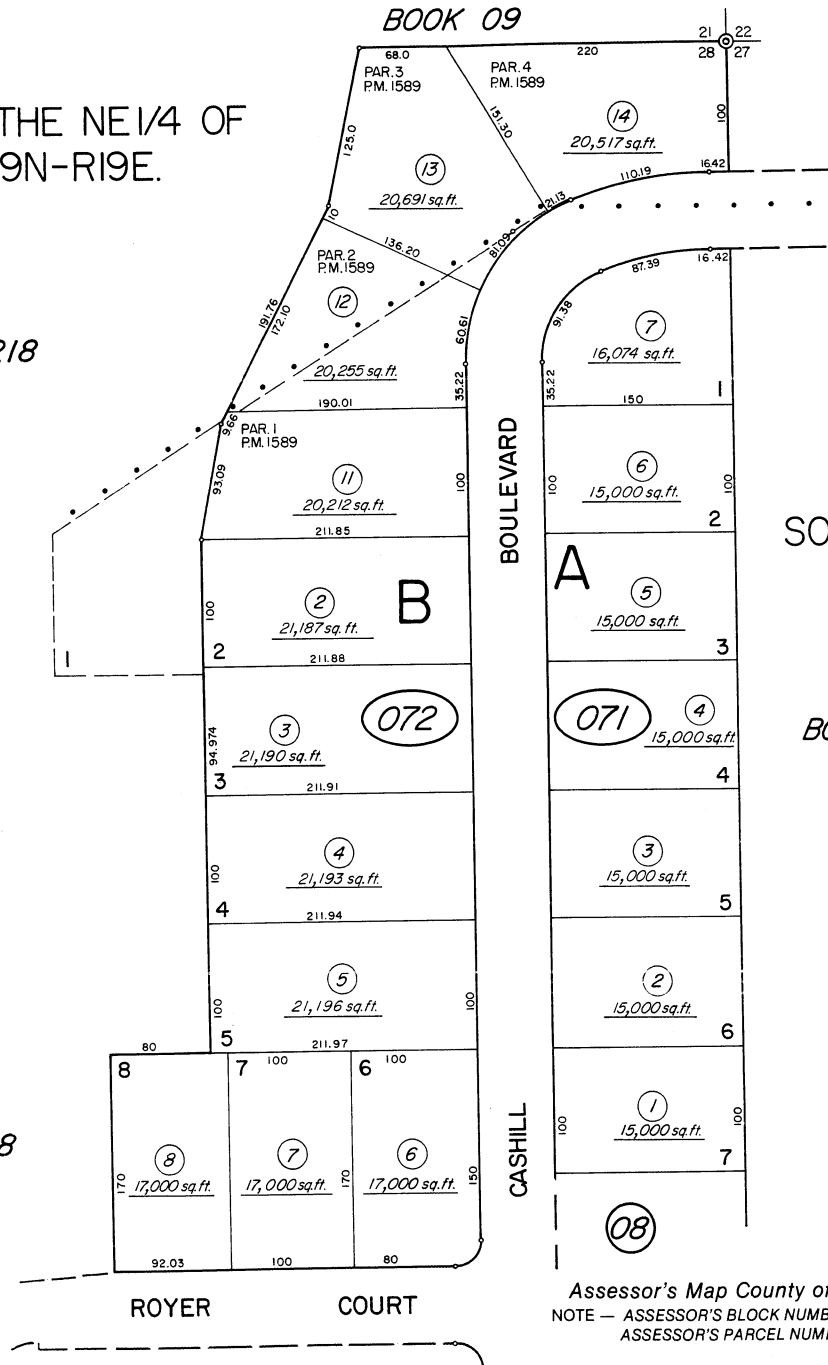


A PORTION OF THE NE 1/4 OF SECTION 28, T19N-R19E.

BOOK 218

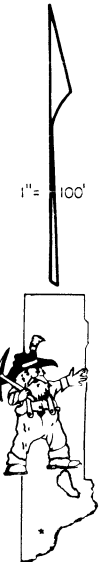
BOOK 218



(#1766)
SOUTH TERRACE HEIGHTS

BOOK 23

1" = 100'



NOTE: This map is prepared for the use of the Washoe County Assessor for assessment and illustrative purposes only, it does not represent survey of the premises. No liability is assumed as to the sufficiency or accuracy of the data delineated hereon.

Assessor's Map County of Washoe, Nevada
NOTE — ASSESSOR'S BLOCK NUMBERS SHOWN IN ELLIPSES
ASSESSOR'S PARCEL NUMBERS SHOWN IN CIRCLES

Drawn by CFB 9/84
Revised by KS 2/00 KSB 2/03 9/04