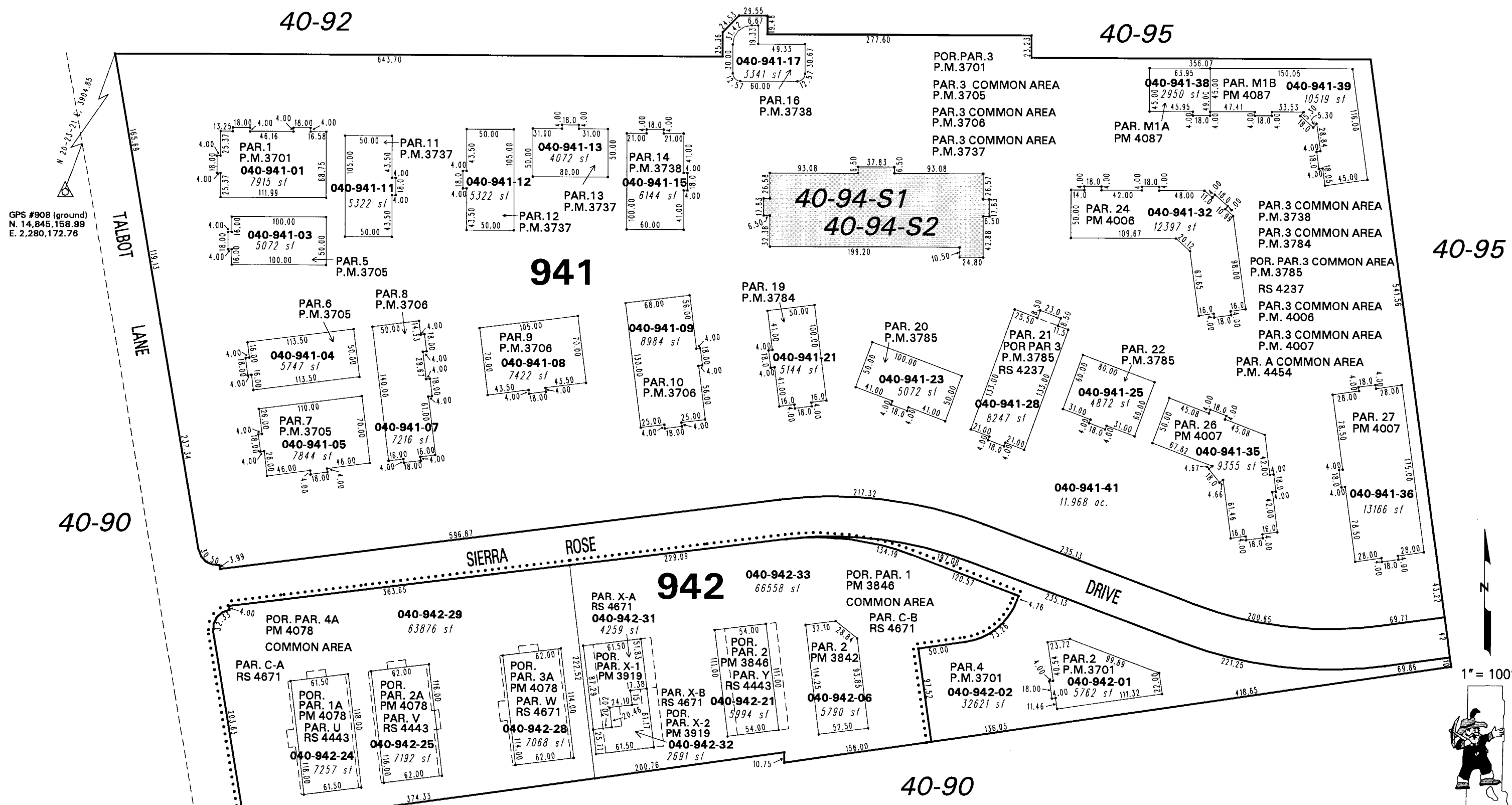


CONDOMINIUM PARCEL MAPS 3701, 3705, 3706, 3737, 3738, 3784, 3785, 4006, 4007 AND 4087 FOR QUAIL CORNERS SOUTH L.L.C.

PORTION OF THE NE 1/4 SECTION 36, T19N - R19E

040-94



GPS #908 (ground)
N. 14,845,158.99
E. 2,280,172.76

40-90

40-92

40-95

40-95

CONDOMINIUM PARCEL MAPS 3842, 3846, 3919 & 4078 QUAIL CORNERS SOUTH PHASE 3

NOTE: This map is prepared for the use of the Washoe County Assessor for assessment and illustrative purposes only. It does not represent a survey of the premises. No liability is assumed as to the sufficiency or the accuracy of the data delineated hereon.

Office of Washoe County Assessor, Nevada - Robert W. McGowan

This area previously shown on 40-08

NOTE: Areas of parcels which are less than 2 acres are shown in square feet.

Drawn by	CFB 1/12/01
Revised	KSB 12/02/04 KSB 9/16/05
	KSB 3/29/06