

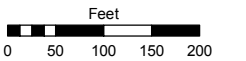
PORTIONS OF THE SW 1/4 SECTION 1  
& THE NW 1/4 SECTION 12  
T18N - R19E

Assessor's Map Number

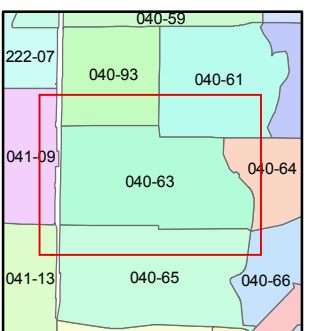
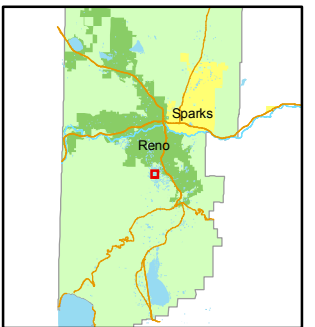
**040-63**

STATE OF NEVADA  
**WASHOE COUNTY**  
ASSESSOR'S OFFICE  
Joshua G. Wilson, Assessor

1001 East Ninth Street  
Building D  
Reno, Nevada 89512  
(775) 328-2231



1 inch = 200 feet



created by: KSB 3/04/10

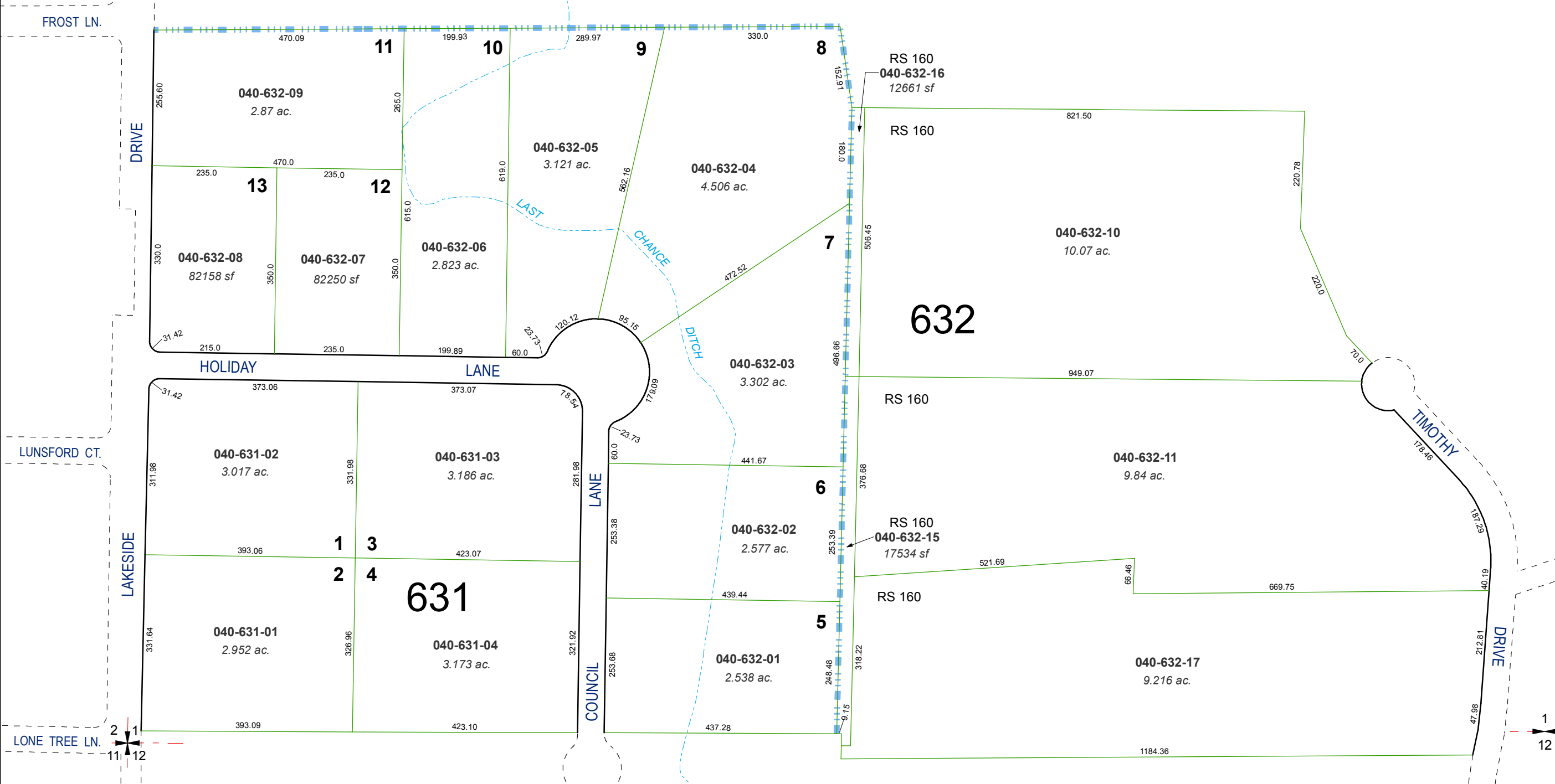
last updated: \_\_\_\_\_

area previously shown on map(s)

040-25

NOTE: This map was prepared for the use of the Washoe County Assessor for assessment and illustrative purposes only. It does not represent a survey of the premises. No liability is assumed as to the sufficiency or accuracy of the data delineated hereon.

**(#846)**  
**LAKESIDE MEADOWS**  
**UNIT NO. 2**



LAKESIDE DRIVE

COUNCIL LANE

TIMOTHY DRIVE

DRIVE

FROST LN.

LUNSFORD CT.

LONE TREE LN.

DRIVE

HOLIDAY LANE

LANE

RS 160  
040-632-16  
12661 sf

RS 160

RS 160  
040-632-15  
17534 sf

RS 160

632

631

1  
12

1  
2  
11  
12