

MESA PARK SUBDIVISION

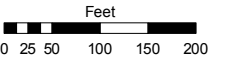
NE 1/4 SECTION 13, T19N - R18E

Assessor's Map Number

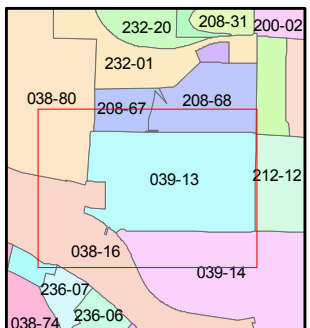
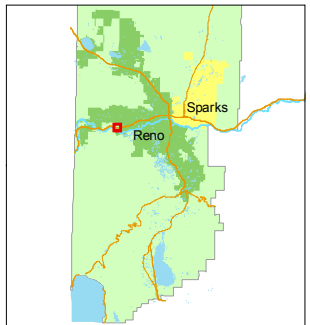
039-13

STATE OF NEVADA
WASHOE COUNTY
ASSESSOR'S OFFICE
 Joshua G. Wilson, Assessor

1001 East Ninth Street
 Building D
 Reno, Nevada 89512
 (775) 328-2231



1 inch = 200 feet

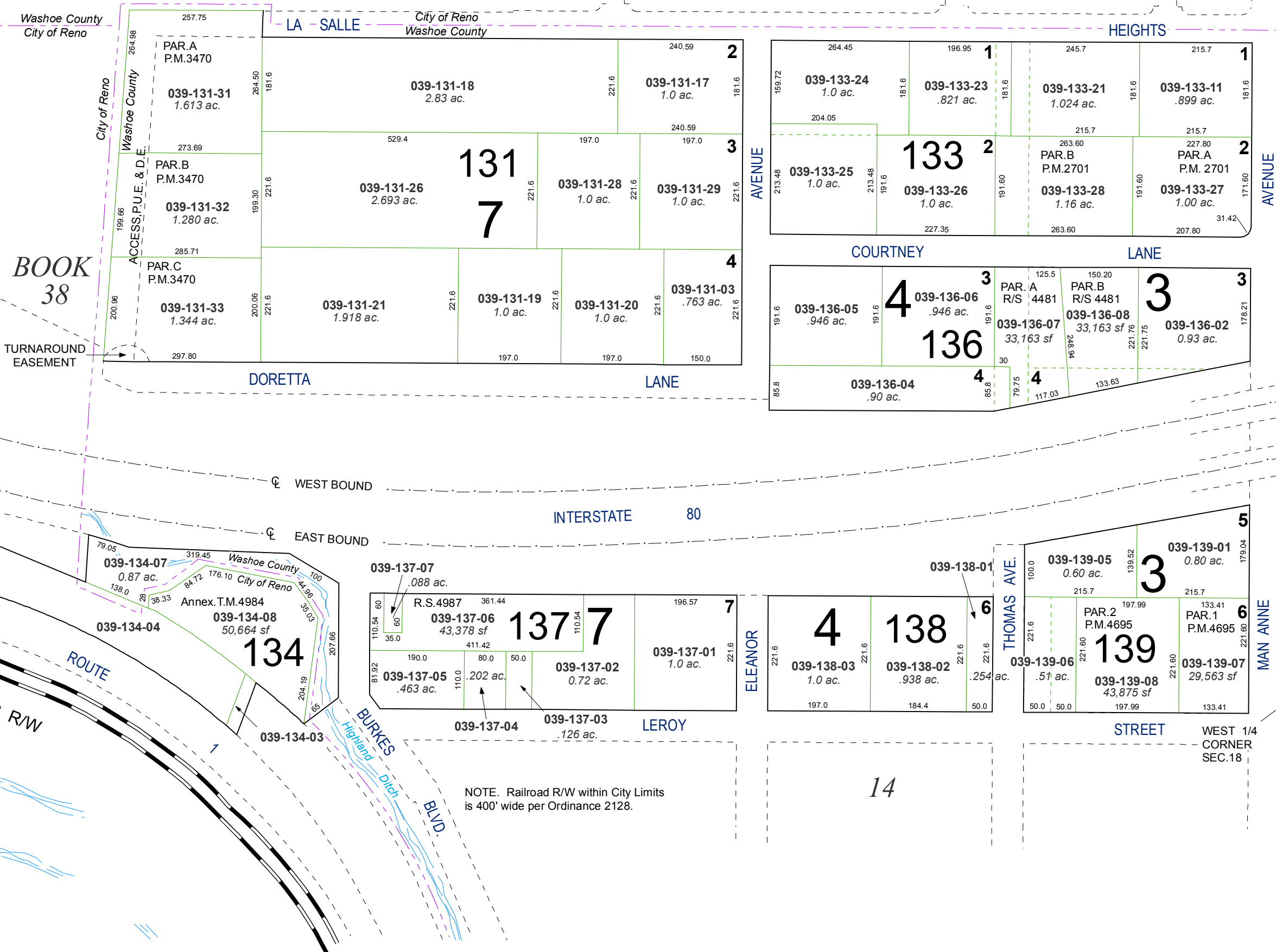


created by: CFB 07/21/2011

last updated: _____

area previously shown on map(s) _____

NOTE: This map was prepared for the use of the Washoe County Assessor for assessment and illustrative purposes only. It does not represent a survey of the premises. No liability is assumed as to the sufficiency or accuracy of the data delineated hereon.



NOTE: Railroad R/W within City Limits is 400' wide per Ordinance 2128.