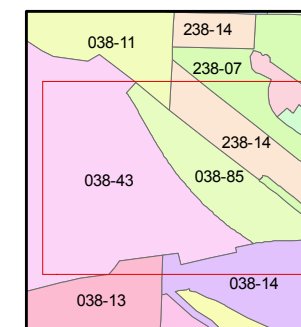
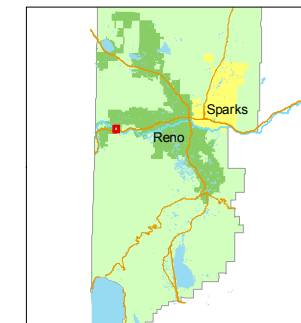


1 inch = 200 feet



created by: CFB 09/21/2009

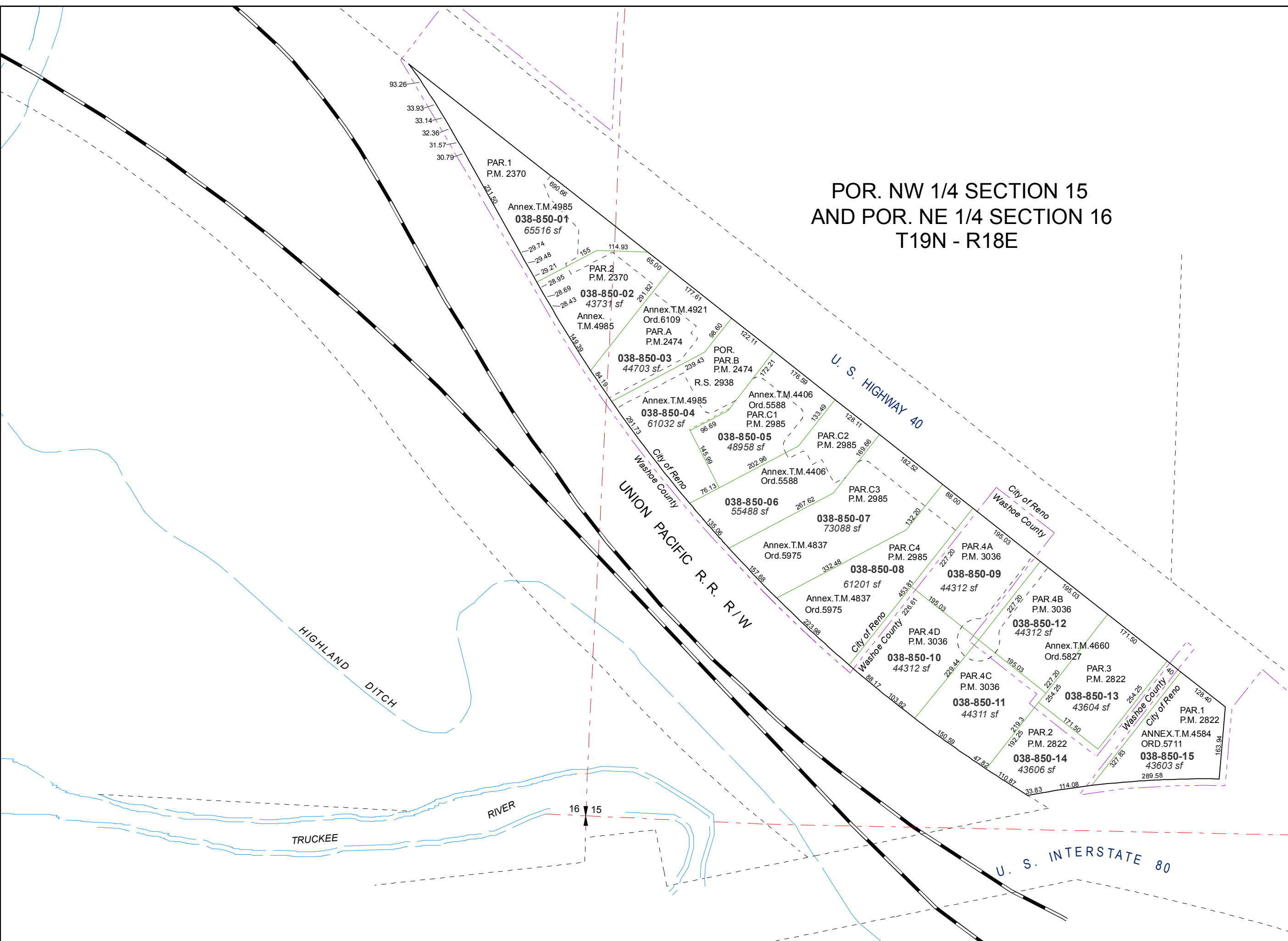
last updated: CFB 07/18/2009

area previously shown on map(s)

038-43

NOTE: This map was prepared for the use of the Washoe County Assessor for assessment and illustrative purposes only. It does not represent a survey of the premises. No liability is assumed as to the sufficiency or accuracy of the data delineated hereon.

**POR. NW 1/4 SECTION 15  
AND POR. NE 1/4 SECTION 16  
T19N - R18E**



16 15

U. S. INTERSTATE 80

TRUCKEE RIVER

UNION PACIFIC R.R. R/W

U. S. HIGHWAY 40

City of Reno Washoe County

City of Reno Washoe County

City of Reno Washoe County

PAR.1 P.M. 2370

Annex.T.M.4985  
**038-850-01**  
65516 sf

PAR.2 P.M. 2370  
**038-850-02**  
43731 sf

**038-850-03**  
44703 sf

**038-850-04**  
61032 sf

**038-850-05**  
48958 sf

**038-850-06**  
55488 sf

**038-850-07**  
73088 sf

**038-850-08**  
61201 sf

**038-850-09**  
44312 sf

**038-850-10**  
44312 sf

**038-850-11**  
44311 sf

**038-850-12**  
44312 sf

**038-850-13**  
43604 sf

**038-850-14**  
43606 sf

**038-850-15**  
43603 sf  
289.58

Annex.T.M.4985  
PAR.A P.M.2474

Annex.T.M.4921  
Ord.6109  
PAR.A P.M.2474

Annex.T.M.4406  
Ord.5588  
PAR.C1 P.M.2985

Annex.T.M.4406  
Ord.5588  
PAR.C2 P.M.2985

Annex.T.M.4837  
Ord.5975  
PAR.C3 P.M.2985

Annex.T.M.4837  
Ord.5975  
PAR.C4 P.M.2985

Annex.T.M.4660  
Ord.5827  
PAR.3 P.M.2822

ANNEX.T.M.4584  
ORD.5711  
PAR.1 P.M.2822

93.26  
33.93  
33.14  
32.36  
31.57  
30.79

29.74  
29.48  
29.21  
28.95  
28.69  
28.43

155  
114.93  
65.00  
177.61  
201.82  
172.21

176.59  
122.11  
98.60  
172.21  
176.59

128.11  
128.11  
128.11  
128.11  
128.11

128.11  
128.11  
128.11  
128.11  
128.11

128.11  
128.11  
128.11  
128.11  
128.11

128.11  
128.11  
128.11  
128.11  
128.11

128.11  
128.11  
128.11  
128.11  
128.11

128.11  
128.11  
128.11  
128.11  
128.11

128.11  
128.11  
128.11  
128.11  
128.11

128.11  
128.11  
128.11  
128.11  
128.11

128.11  
128.11  
128.11  
128.11  
128.11

281.73  
84.19  
143.39

267.62  
76.13  
145.99

135.06  
157.88  
332.48

553.81  
226.61  
223.98

195.02  
227.20  
227.20

195.02  
227.20  
227.20

195.02  
227.20  
227.20

195.02  
227.20  
227.20

195.02  
227.20  
227.20

195.02  
227.20  
227.20

195.02  
227.20  
227.20

195.02  
227.20  
227.20

195.02  
227.20  
227.20

195.02  
227.20  
227.20

195.02  
227.20  
227.20