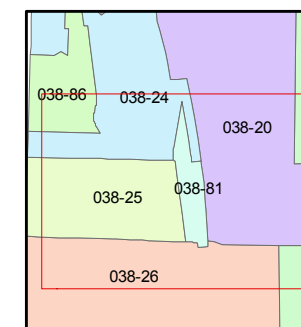
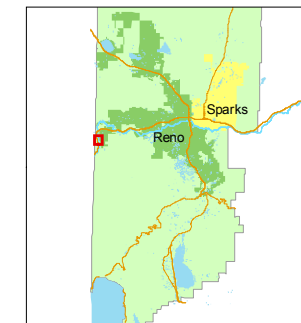


1 inch = 300 feet



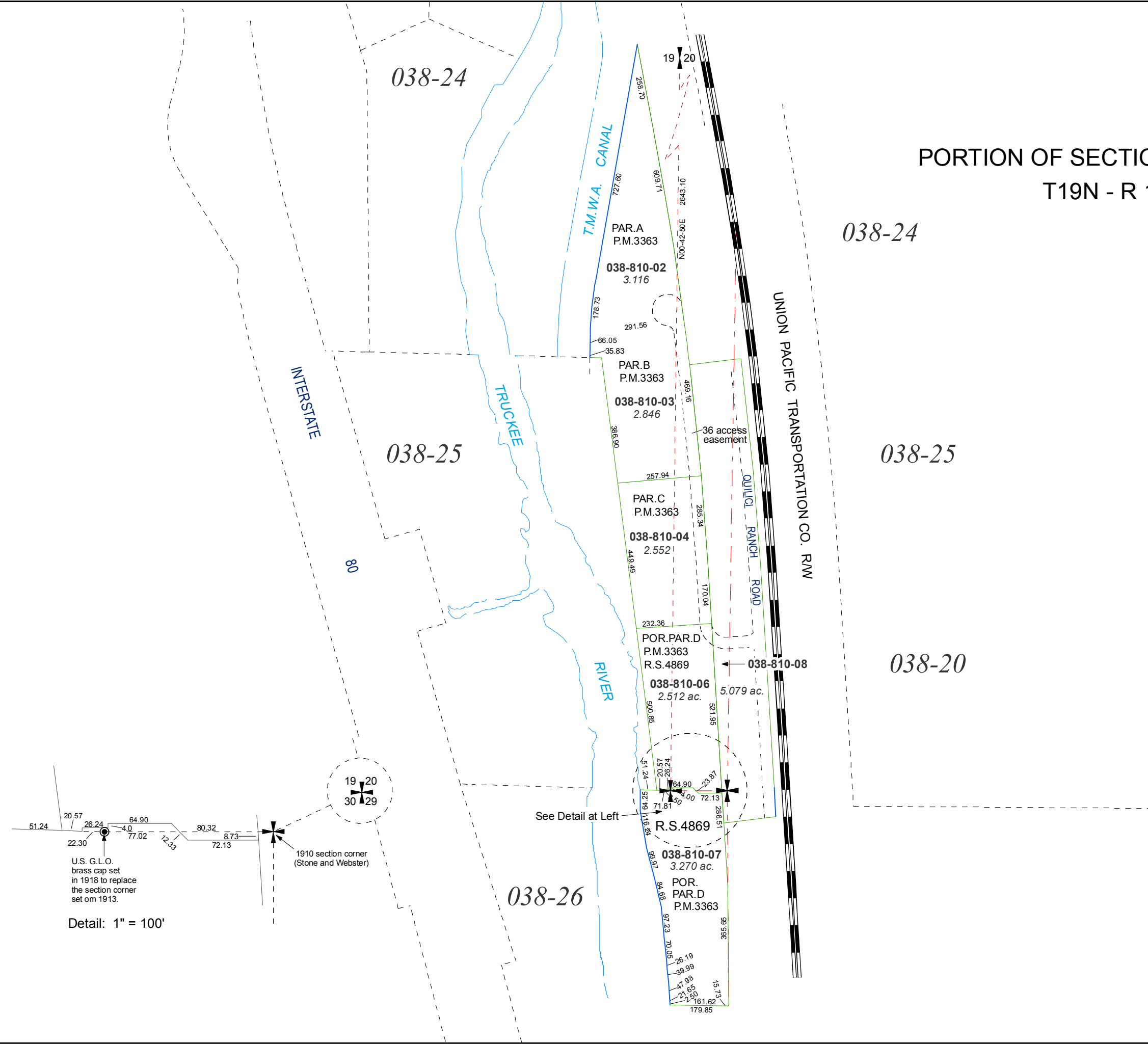
created by: CFB 04/28/2011

last updated: _____

area previously shown on map(s)

NOTE: This map was prepared for the use of the Washoe County Assessor for assessment and illustrative purposes only. It does not represent a survey of the premises. No liability is assumed as to the sufficiency or accuracy of the data delineated hereon.

PORTION OF SECTIONS 19 AND 20
T19N - R 18E



Detail: 1" = 100'