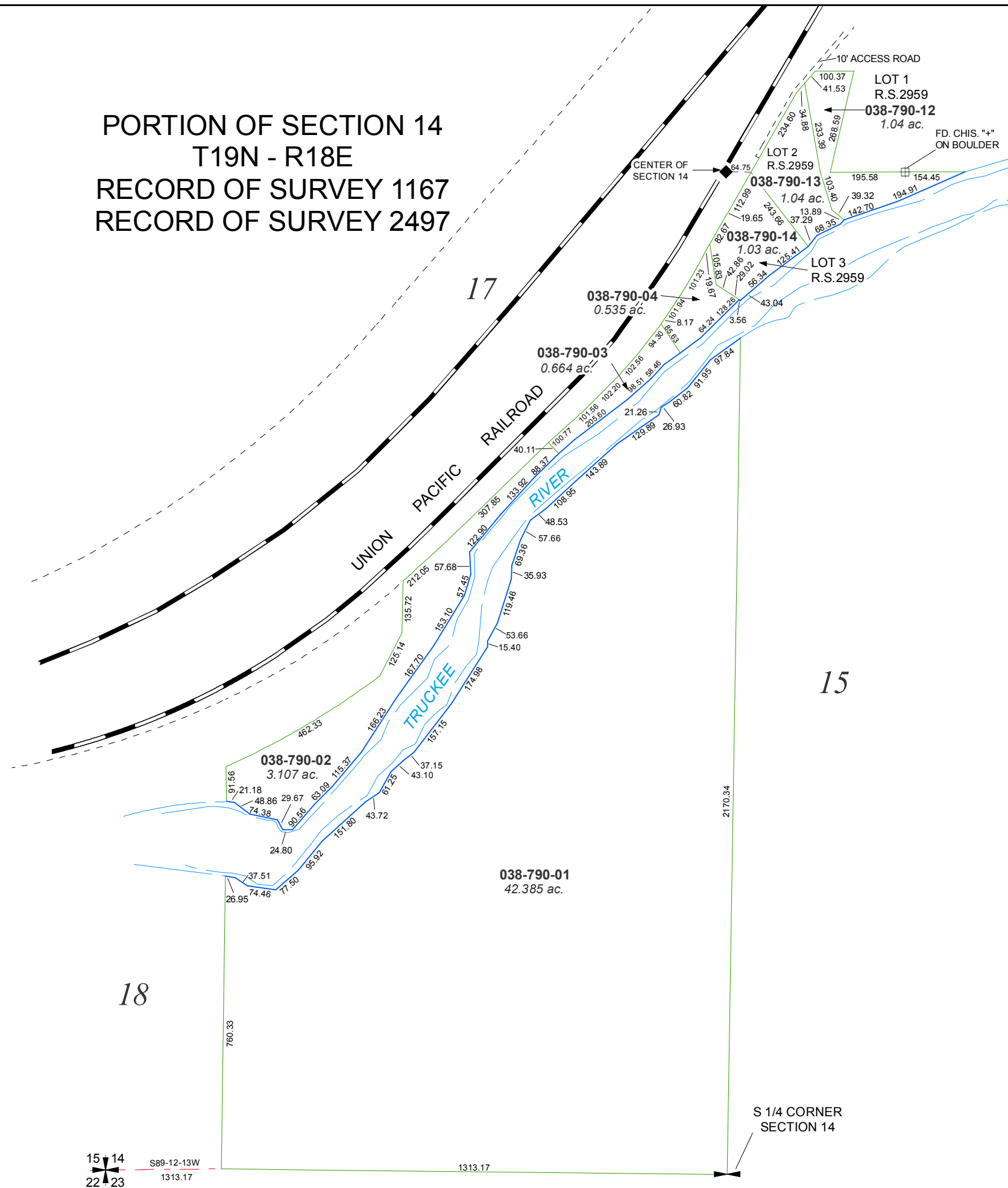


PORTION OF SECTION 14
T19N - R18E
RECORD OF SURVEY 1167
RECORD OF SURVEY 2497



15 14
22 23

S89-12-13W
1313.17

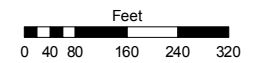
19

Assessor's Map Number

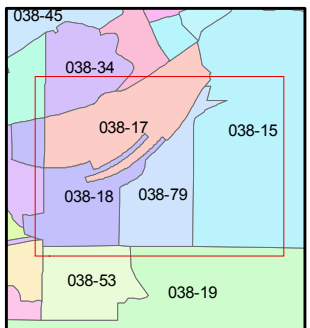
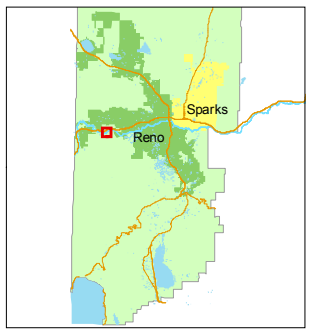
038-79

STATE OF NEVADA
WASHOE COUNTY
ASSESSOR'S OFFICE
Joshua G. Wilson, Assessor

1001 East Ninth Street
Building D
Reno, Nevada 89512
(775) 328-2231



1 inch = 300 feet



created by: CFB 06/22/2011

last updated:

area previously shown on map(s)
038-15

NOTE: This map was prepared for the use of the Washoe County Assessor for assessment and illustrative purposes only. It does not represent a survey of the premises. No liability is assumed as to the sufficiency or accuracy of the data delineated hereon.