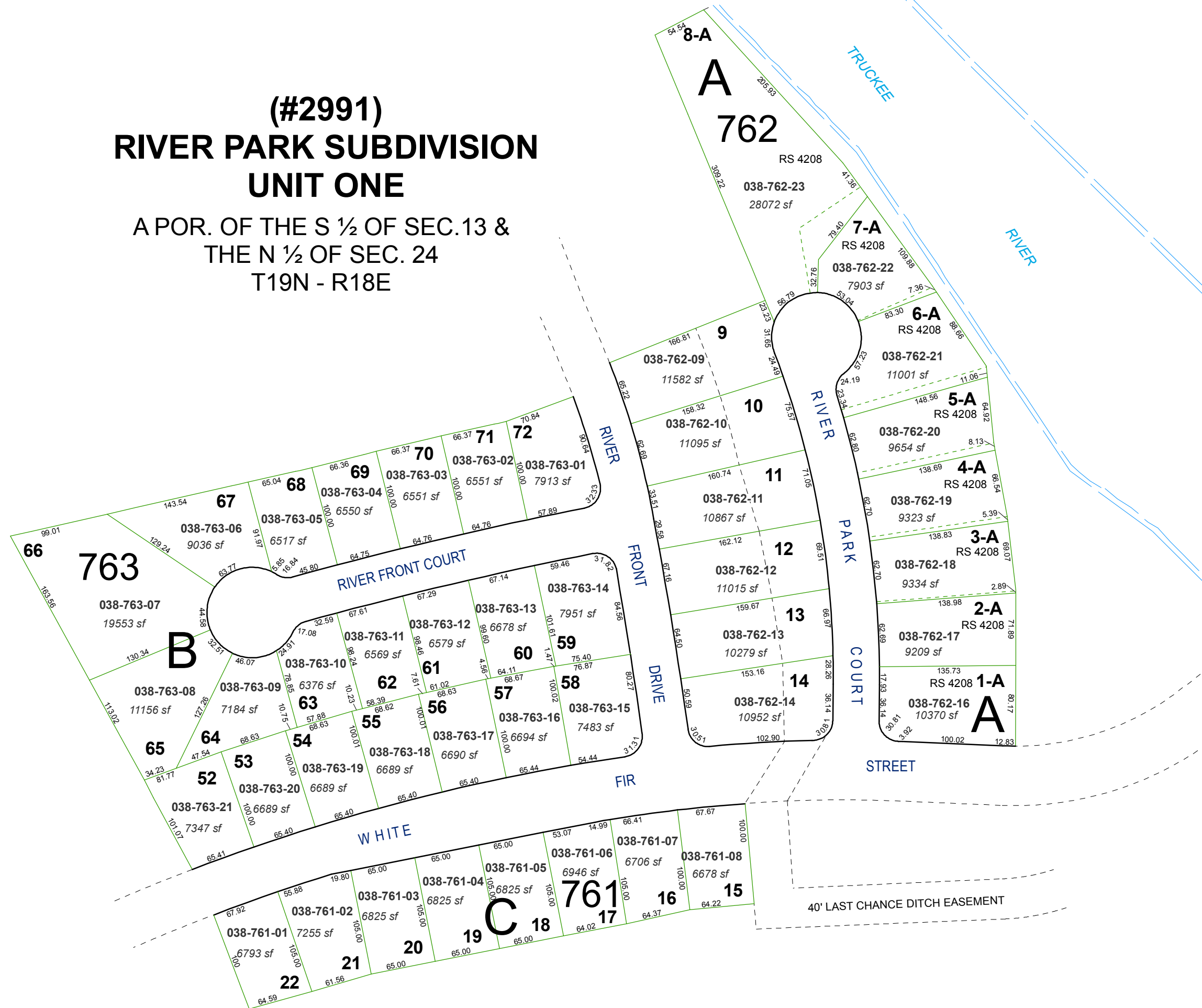


**(#2991)
RIVER PARK SUBDIVISION
UNIT ONE**

A POR. OF THE S 1/2 OF SEC. 13 &
THE N 1/2 OF SEC. 24
T19N - R18E

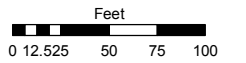


Assessor's Map Number

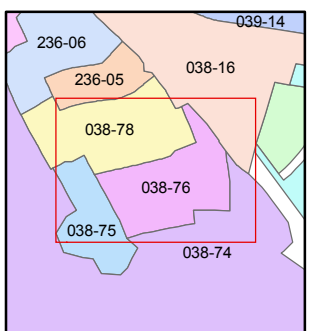
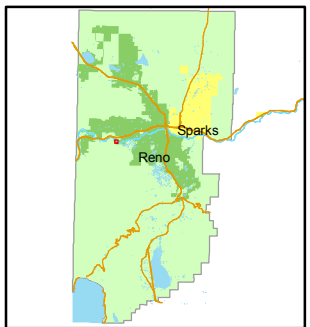
038-76

STATE OF NEVADA
WASHOE COUNTY
ASSESSOR'S OFFICE
Joshua G. Wilson, Assessor

1001 East Ninth Street
Building D
Reno, Nevada 89512
(775) 328-2231



1 inch = 100 feet



created by: NLH 9/27/2010

last updated: _____

area previously shown on map(s)

038-53

NOTE: This map was prepared for the use of the Washoe County Assessor for assessment and illustrative purposes only. It does not represent a survey of the premises. No liability is assumed as to the sufficiency or accuracy of the data delineated herein.