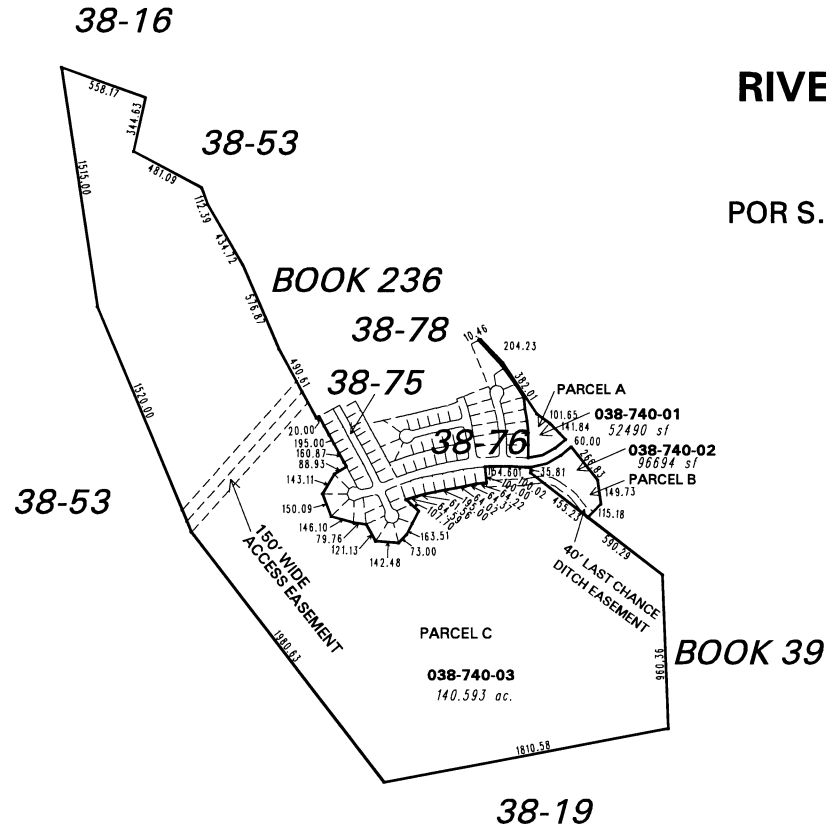


(#2991)
**RIVER PARK SUBDIVISION
UNIT ONE**

POR S.1/2 SEC.13 & N.1/2 SEC.24
T 19N, R 18E



1" = 800'



NOTE: This map is prepared for the use of the Washoe County Assessor for assessment and illustrative purposes only. It does not represent a survey of the premises. No liability is assumed as to the sufficiency or the accuracy of the data delineated hereon.

Office of Washoe County Assessor, Nevada - Robert W. McGowan

This area previously shown on 38-53

NOTE: Areas of parcels which are less than 2 acres are shown in square feet.

Drawn by	RM	01/10/94
Revised	KS 7/21/99	CFB 12/12/2002