

Assessor's Map Number

**038-42**

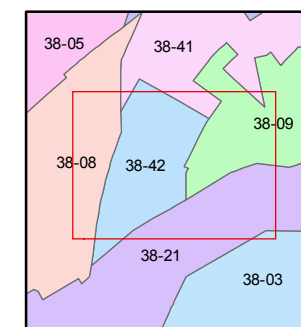
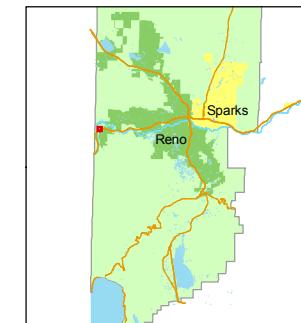
STATE OF NEVADA  
**WASHOE COUNTY**  
ASSESSOR'S OFFICE  
Joshua G. Wilson, Assessor

1001 East Ninth Street  
Building D  
Reno, Nevada 89512  
(775) 328-2231



Feet  
0 12.525 50 75 100

1 inch = 100 feet



created by: TWT 10/12/2009

last updated: \_\_\_\_\_

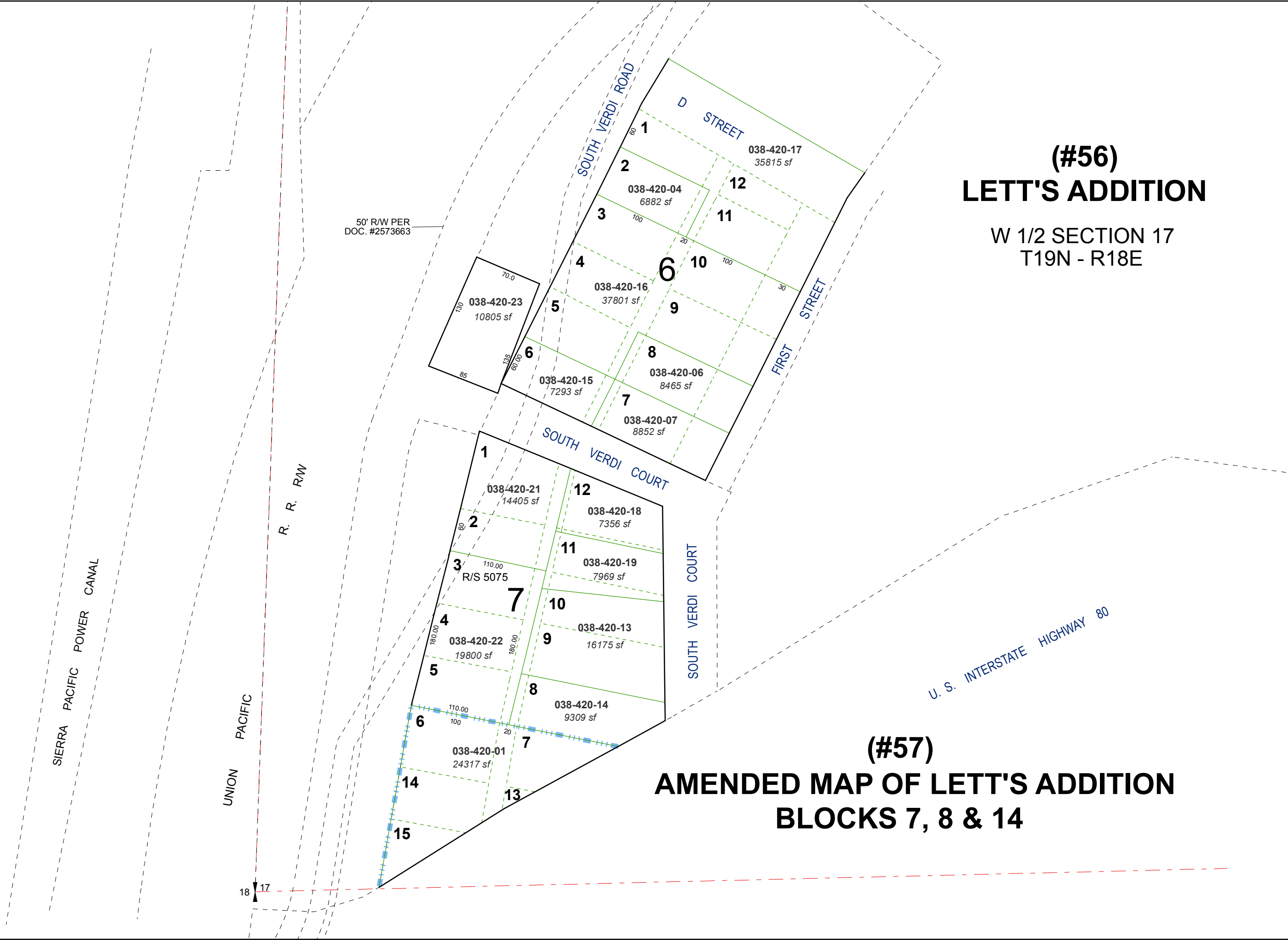
area previously shown on map(s)  
\_\_\_\_\_

NOTE: This map was prepared for the use of the Washoe County Assessor for assessment and illustrative purposes only. It does not represent a survey of the premises. No liability is assumed as to the sufficiency or accuracy of the data delineated hereon.

# (#56) LETT'S ADDITION

W 1/2 SECTION 17  
T19N - R18E

# (#57) AMENDED MAP OF LETT'S ADDITION BLOCKS 7, 8 & 14



50' R/W PER  
DOC. #2573663

R. R. R/W

UNION  
PACIFIC

SIERRA PACIFIC  
POWER CANAL

U. S. INTERSTATE HIGHWAY 80

17  
18