

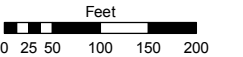
PORTIONS OF THE NE 1/4 OF SECTION 19 AND THE SE 1/4 OF SECTION 18 T19N - R18E

Assessor's Map Number

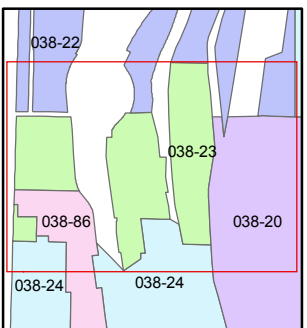
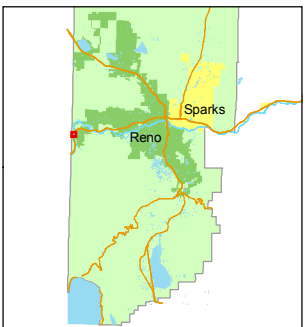
038-23

STATE OF NEVADA
WASHOE COUNTY
ASSESSOR'S OFFICE
Joshua G. Wilson, Assessor

1001 East Ninth Street
Building D
Reno, Nevada 89512
(775) 328-2231



1 inch = 200 feet



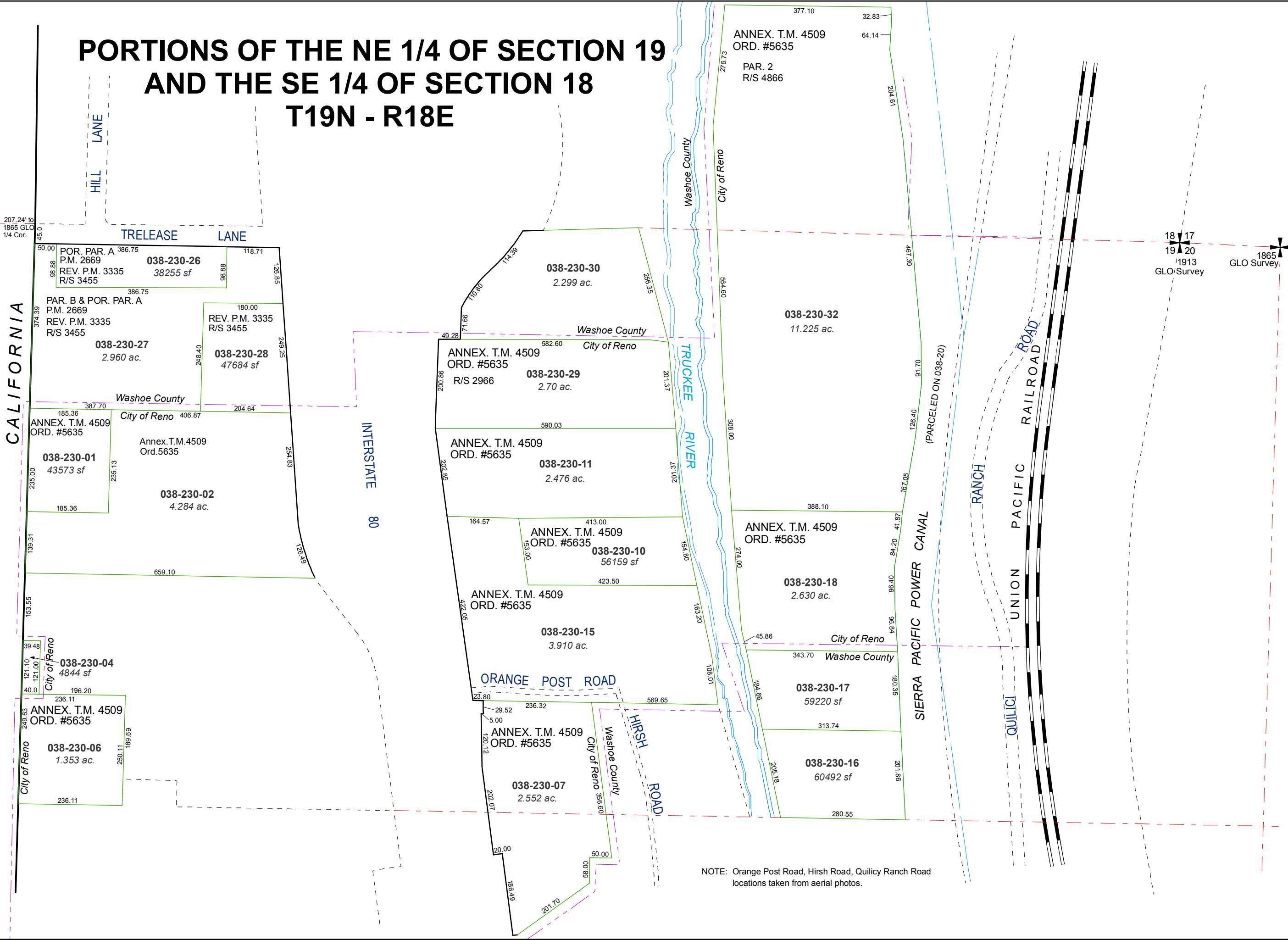
created by: TWT 11/25/2009

last updated: CFB 05/03/2010

area previously shown on map(s)

038-22

NOTE: This map was prepared for the use of the Washoe County Assessor for assessment and illustrative purposes only. It does not represent a survey of the premises. No liability is assumed as to the sufficiency or accuracy of the data delineated hereon.



NOTE: Orange Post Road, Hirsh Road, Quilicy Ranch Road locations taken from aerial photos.

CALIFORNIA

207.24' to 1865 GLO 1/4 Cor.

18 17
19 20
1913 GLO Survey
1865 GLO Survey