

Assessor's Map Number

**038-20**

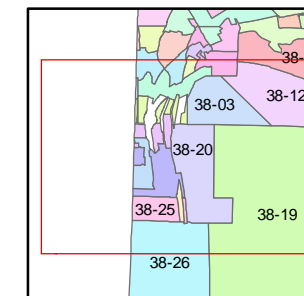
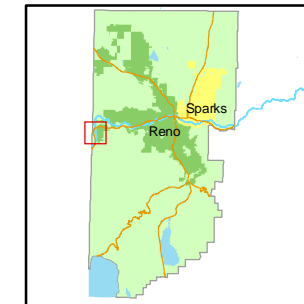
STATE OF NEVADA  
**WASHOE COUNTY**  
**ASSESSOR'S OFFICE**

Joshua G. Wilson, Assessor  
1001 East Ninth Street  
Building D  
Reno, Nevada 89512  
(775) 328-2231



0 125 250 500 750 1,000 Feet

1 inch equals 1,000 feet



created by: CFB 04/01/2009

last updated: \_\_\_\_\_

area previously shown on map(s)

NOTE: This map was prepared for the use of the Washoe County Assessor for assessment and illustrative purposes only. It does not represent a survey of the premises. No liability is assumed as to the sufficiency or accuracy of the data delineated hereon.

**PORTION SEC. 18, 19, 20 & 29**  
**T19N - R18E**

038-21 →

038-22 →

038-23 →

**CALIFORNIA**

038-86

038-25

038-26

038-21

038-23

038-24

038-03

038-19

PAR.2-A  
R.S.5128

038-200-15  
15.30 ac.

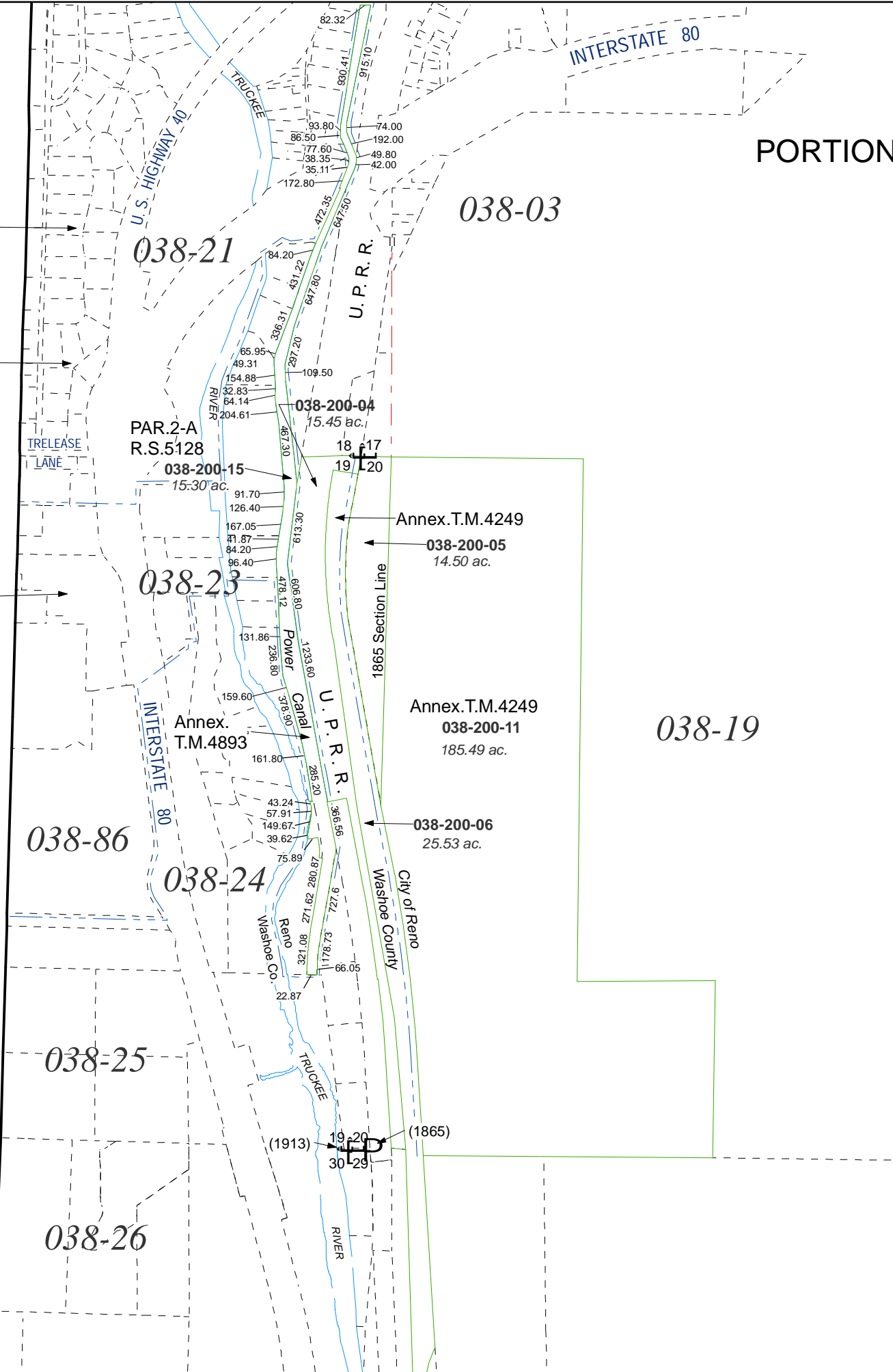
038-200-04  
15.45 ac.

Annex.T.M.4249

038-200-05  
14.50 ac.

Annex.T.M.4249  
038-200-11  
185.49 ac.

038-200-06  
25.53 ac.



(1913) 19.20  
30-29 (1865)